

# Cornell Cooperative Extension of Monroe County

## Farm Transition Planning *Preserving Your Legacy*

Tuesday, November 19th, 8:30am - 12:30pm  
Piano Works Mall, 349 West Commercial St.,  
East Rochester, NY 14445

### ***A workshop for agricultural business owners to learn about transitioning to the next generation***

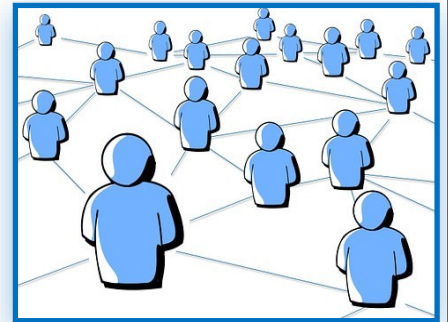
Professionals from MassMutual New York State and Farm Credit East will discuss tools & tactics for effective succession planning to help preserve your farm business and a hard-earned legacy:

- Goal development & timeline setting
- Document preparation and tax and legal considerations
- Family business meeting structure & communication
- Transition team development
- Plan implementation

Join us and learn the steps that are needed for successful farm transition planning in a multi-generation business. All members of each generation involved in agricultural business together are encouraged to participate.

**Registration fee \$15 per farm — breakfast included!**

**Register [HERE](#)**



**MassMutual**  
New York State

Cornell Cooperative Extension  
Monroe County

 **FARM CREDIT EAST**

*“Cornell Cooperative Extension is an employer and educator recognized for valuing AA/EEO, Protected Veterans, and Individuals with Disabilities and provides equal program and employment opportunities”*

*“Securities and investment advisory services offered through qualified registered representatives of MML Investors Services, LLC. Member SIPC. Keystone Capital Partners Group is not a subsidiary or affiliate of MML Investors Services, LLC, or its affiliated companies. OSJ 700 Bausch & Lomb Place, Rochester NY 14604 (585) 262-5600”*