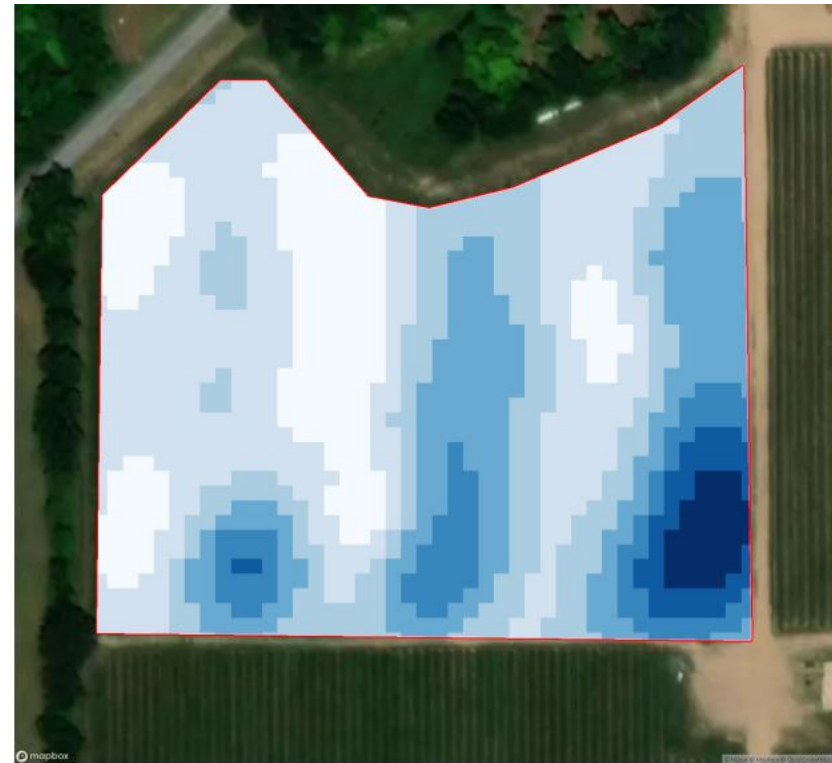




Blossom Number



Average Fruit Number

- Drone captured images in ~8 minutes for the 8-acre block
- Outfield generated bloom heatmap (Left) and average fruit number heatmap (Right)
- Differences of Fuji and Honeycrisp blossom timing result in three darker-shade regions of the maps
- Cornell is exploring Outfield harvest prediction estimates and variable rate spraying using Outfield data
- Variable rate spray application based off heatmaps for VariMAS (Munchkof) or SmartApply (John Deere) sprayers