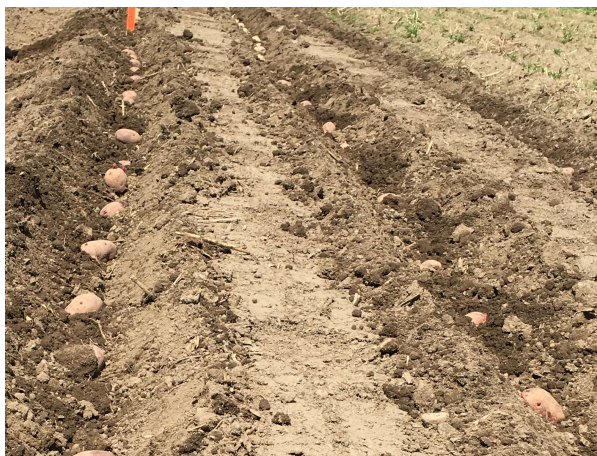




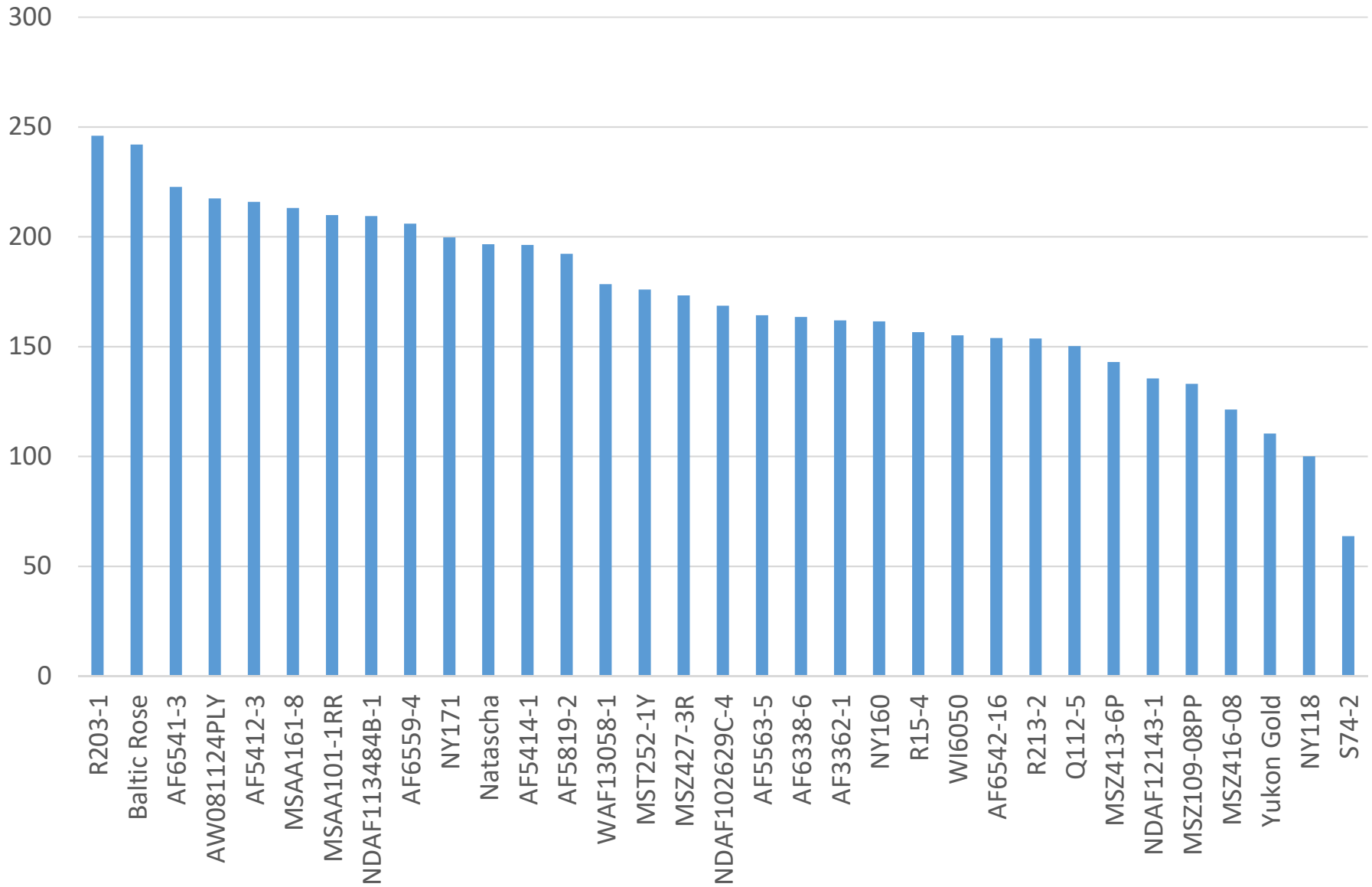
# Cornell Cooperative Extension

## Eastern NY Commercial Horticulture Program

# 2021 Potato Variety Trial



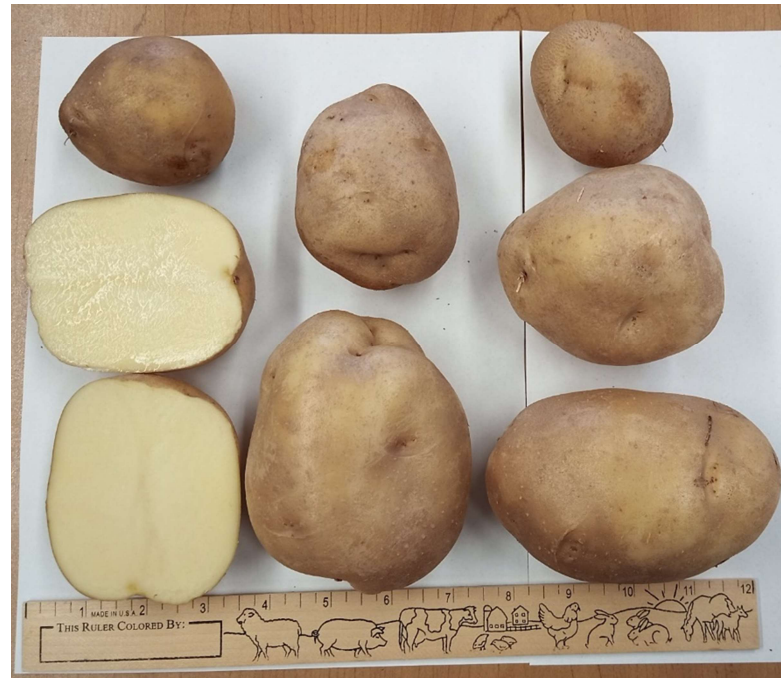
## Total Marketable Yield (Cwt)



# Trial Information

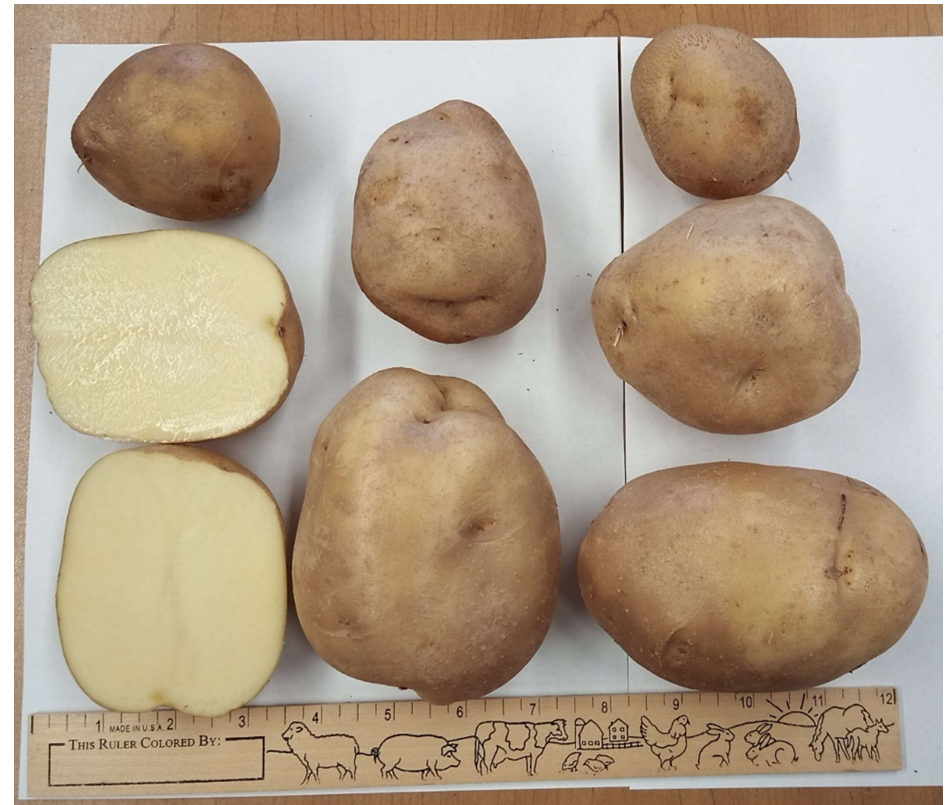
- Columbia County
- Conventional
- Row spacing: 30", in row spacing: 12"
- Planted 5/14/21
- Irrigated
- Harvested November 1<sup>st</sup> and graded November 18<sup>th</sup> 19<sup>th</sup> and 22<sup>nd</sup> using grader with chains set at various lengths as seen in data
- Taste testing information may come later

# White Skin, White Flesh Lines



# AF5563-5

- University of Maine
- White skin, white flesh
- Shape is mostly oblong and round
- Huge size with a ton of chef's
- Smooth skin, nice color
- Shallow eyes
- Some misshapes and cracks
- Hollow heart issues on the big chef's



	Yield of Marketable Tubers by Size Distribution (cwt.)			% of Marketable Yield by Size Distribution		
	Chef's (> 3")	#1 "A's" (> 2 1/2")	"B's" (< 2")	Chef's (%)	#1 "A's" (%)	"B's" (%)
<b>Total Marketable Yield (Cwt)<sup>1</sup></b>	<b>98</b>	<b>65</b>	<b>2</b>	<b>59</b>	<b>39</b>	<b>1</b>

# AF5819-2

- University of Maine
- White skin, white flesh
- Mostly rounded shape
- Few shallow eyes
- Good size, a lot of large A's and chef's
- Some stem end discoloration and PVY issues found
- Culls otherwise were mostly greeners



Total Marketable Yield (Cwt) <sup>1</sup>	Yield of Marketable Tubers by Size Distribution (cwt.)			% of Marketable Yield by Size Distribution		
	Chef's (> 3")	#1 "A's" (> 2 1/2")	"B's" (< 2")	Chef's (%)	#1 "A's" (%)	"B's" (%)
<b>192</b>	<b>77</b>	<b>108</b>	<b>8</b>	<b>40</b>	<b>56</b>	<b>4</b>

# AF6559-4

- University of Maine
- White skin, white flesh
- Shape is very round and slightly oblong
- Very uniform
- Excellent size, chef's are nice but not too big
- Medium eyes
- Bright clean skin
- Small amount of cracking



	Yield of Marketable Tubers by Size Distribution (cwt.)			% of Marketable Yield by Size Distribution		
	Chef's (> 3")	#1 "A's" (> 2 1/2")	"B's" (< 2")	Chef's (%)	#1 "A's" (%)	"B's" (%)
<b>Total Marketable Yield (Cwt)<sup>1</sup></b>	<b>54</b>	<b>141</b>	<b>11</b>	<b>26</b>	<b>68</b>	<b>5</b>

# NADF102629C-4

- University of Maine
- White skin, white flesh
- Round shape with some oblongs, very nice looking
- Skin has a little bit of texture to it, buff color
- Shallow eyes
- Great size, with mostly large A's and some chef's, all very uniform
- Culls were mostly greener



Total Marketable Yield (Cwt) <sup>1</sup>	Yield of Marketable Tubers by Size Distribution (cwt.)			% of Marketable Yield by Size Distribution		
	Chef's (> 3")	#1 "A's" (> 2 1/2")	"B's" (< 2")	Chef's (%)	#1 "A's" (%)	"B's" (%)
<b>169</b>	<b>36</b>	<b>115</b>	<b>18</b>	<b>21</b>	<b>68</b>	<b>10</b>



# NY171

- Cornell University
- White skin with dark purple splashes, white flesh
- Oblong and flat shape
- Very nice looking overall
- Skin is smooth and bright
- Some eyes are raised but mostly shallow
- Some variation in sizes, chef's, A's and B's all present and look nice
- Culls were mostly greeners



Total Marketable Yield (Cwt) <sup>1</sup>	Yield of Marketable Tubers by Size Distribution (cwt.)			% of Marketable Yield by Size Distribution		
	Chef's (> 3")	#1 "A's" (> 2 1/2")	"B's" (< 2")	Chef's (%)	#1 "A's" (%)	"B's" (%)
<b>200</b>	<b>83</b>	<b>99</b>	<b>18</b>	<b>41</b>	<b>50</b>	<b>9</b>

# Q112-5

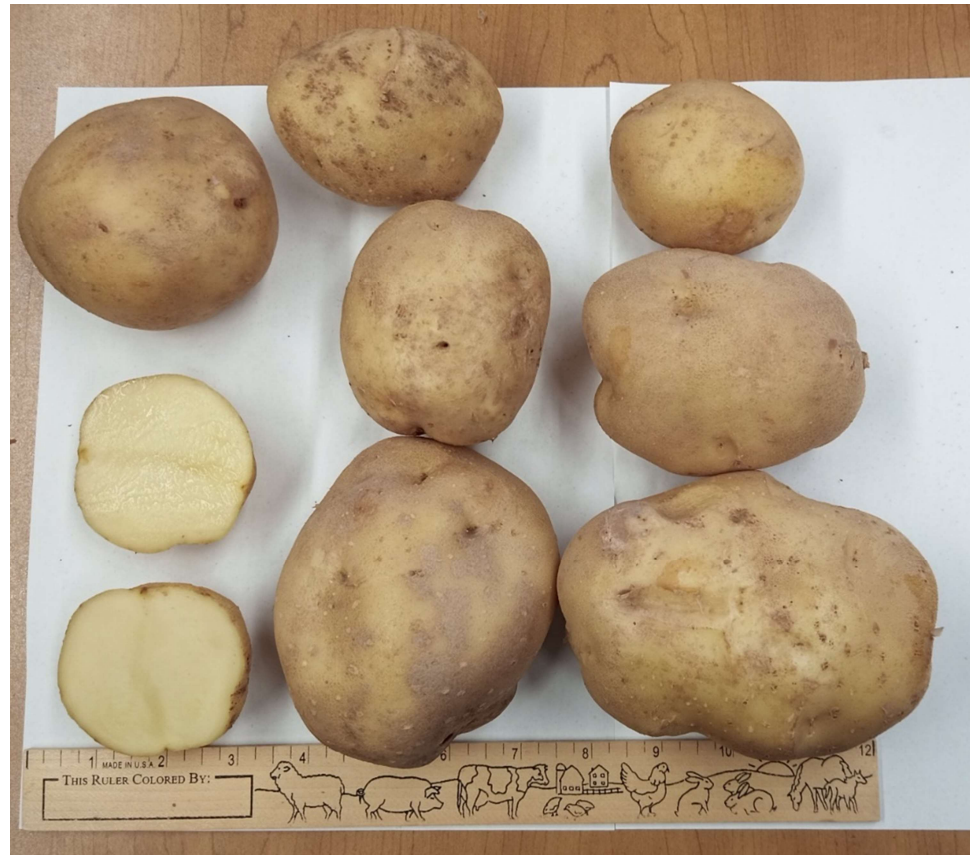
- Cornell University
- White skin, white flesh
- Shape is variable, round or oblong flat
- Smooth skin, bright color
- Good size, with plenty of chef's and A's
- Few culls, mostly greener
- Overall, very nice



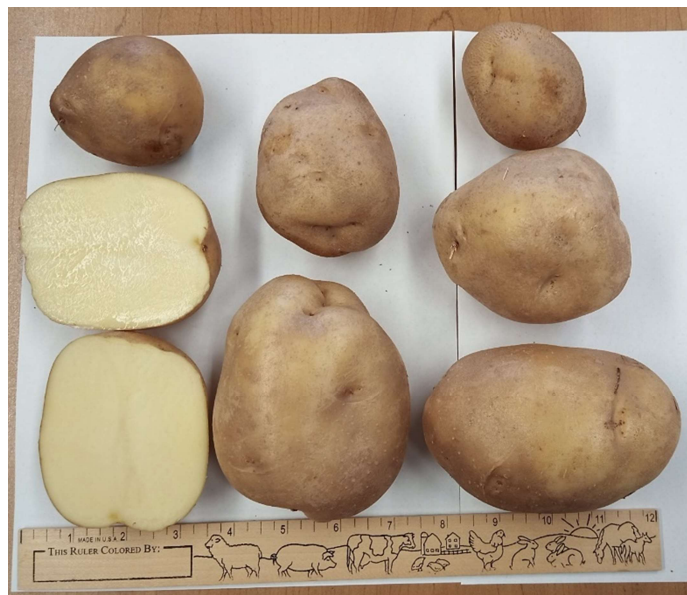
	Yield of Marketable Tubers by Size Distribution (cwt.)			% of Marketable Yield by Size Distribution		
	Chef's (> 3")	#1 "A's" (> 2 1/2")	"B's" (< 2")	Chef's (%)	#1 "A's" (%)	"B's" (%)
<b>Total Marketable Yield (Cwt)<sup>1</sup></b>	<b>30</b>	<b>110</b>	<b>10</b>	<b>20</b>	<b>73</b>	<b>7</b>

# R15-4

- Cornell University
- White skin, white flesh
- Shape is flattened and oblong, some of them are lumpy and inconsistent in shape
- Skin has a little texture
- A few cracks
- Shallow eyes
- Culls were mostly greeners with some cracks



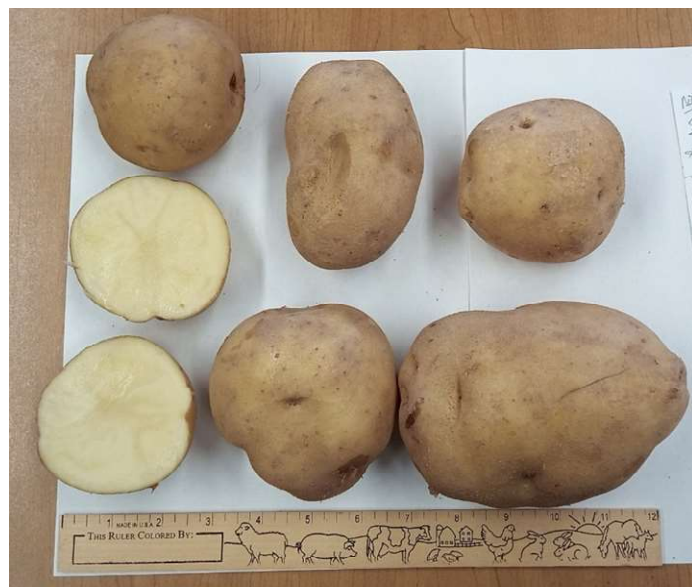
	Yield of Marketable Tubers by Size Distribution (cwt.)			% of Marketable Yield by Size Distribution		
	Chef's (> 3")	#1 "A's" (> 2 1/2")	"B's" (< 2")	Chef's (%)	#1 "A's" (%)	"B's" (%)
<b>Total Marketable Yield (Cwt)<sup>1</sup></b>	<b>64</b>	<b>87</b>	<b>6</b>	<b>41</b>	<b>56</b>	<b>4</b>



AF5563-5



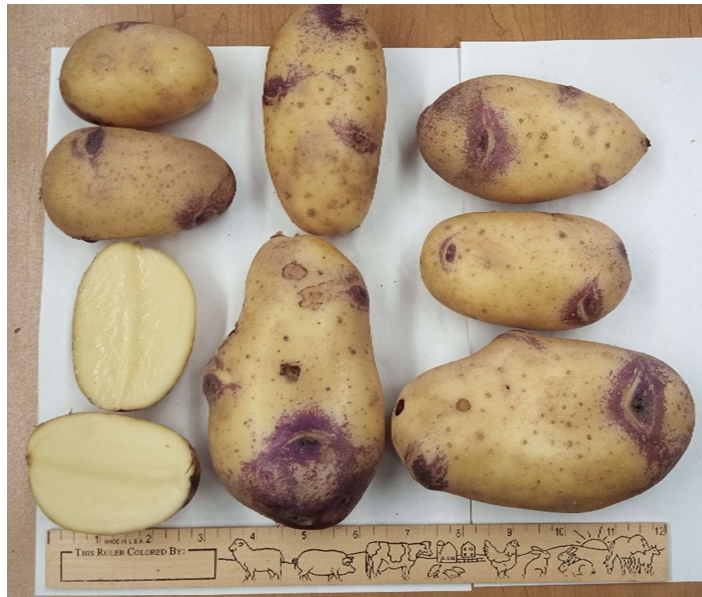
AF5819-2



AF6559-4



NADF102629C-4



NY171



Q112-5



R15-4

# Red Skin White Flesh Lines



# MSZ427-3R

- Michigan State University
- Red skin, white flesh
- Skin can be a little paler with some scruff
- Shape is round with some flatter oblongs
- Medium eyes
- No major cull issues
- Good size



	Yield of Marketable Tubers by Size Distribution (cwt.)			% of Marketable Yield by Size Distribution		
	Chef's (> 3")	#1 "A's" (> 2 1/2")	"B's" (< 2")	Chef's (%)	#1 "A's" (%)	"B's" (%)
<b>Total Marketable Yield (Cwt)<sup>1</sup></b>	<b>54</b>	<b>111</b>	<b>8</b>	<b>31</b>	<b>64</b>	<b>5</b>

# NDAF113484B-1

- University of Maine
- Red skin, white flesh
- Liked this variety in past years' trials as well
- Round, round shape that was very nice
- Skin can be a little scruffy
- Shallow eyes
- Very few culls
- Good size and variety of sizes
- Lots of really big A's and B's also nice



	Yield of Marketable Tubers by Size Distribution (cwt.)			% of Marketable Yield by Size Distribution		
	Chef's (> 3")	#1 "A's" (> 2 1/2")	"B's" (< 2")	Chef's (%)	#1 "A's" (%)	"B's" (%)
<b>Total Marketable Yield (Cwt)<sup>1</sup></b>	<b>77</b>	<b>128</b>	<b>4</b>	<b>37</b>	<b>61</b>	<b>2</b>



# NDAF12143-1

- University of Maine
- Red skin, white flesh
- Nice dark red color
- Medium eyes
- Round shape
- Similar to the NDAF113484B-1 if a little smaller overall
- A few growth cracks but not major



	Yield of Marketable Tubers by Size Distribution (cwt.)			% of Marketable Yield by Size Distribution		
	Chef's (> 3")	#1 "A's" (> 2 1/2")	"B's" (< 2")	Chef's (%)	#1 "A's" (%)	"B's" (%)
<b>Total Marketable Yield (Cwt)<sup>1</sup></b>	<b>21</b>	<b>106</b>	<b>9</b>	<b>16</b>	<b>78</b>	<b>6</b>

# NY118

- Cornell University
- Red skin, white flesh
- Nice light red skin
- Oblong to round shape
- Chef's and A's are round to slightly flattened, B's are round
- Didn't yield well in 2021
- Medium eyes
- Uniform in size, mostly A's and some chef's



	Yield of Marketable Tubers by Size Distribution (cwt.)			% of Marketable Yield by Size Distribution		
	Chef's (> 3")	#1 "A's" (> 2 1/2")	"B's" (< 2")	Chef's (%)	#1 "A's" (%)	"B's" (%)
<b>Total Marketable Yield (Cwt)<sup>1</sup></b>	<b>17</b>	<b>73</b>	<b>10</b>	<b>17</b>	<b>73</b>	<b>10</b>

# NY160

- Cornell University
- Pink skin, white flesh
- Skin is smooth
- Shallow eyes
- Not a big potato with some nice A's but a lot of B's
- Round shape to slightly oblong
- No major cull issues



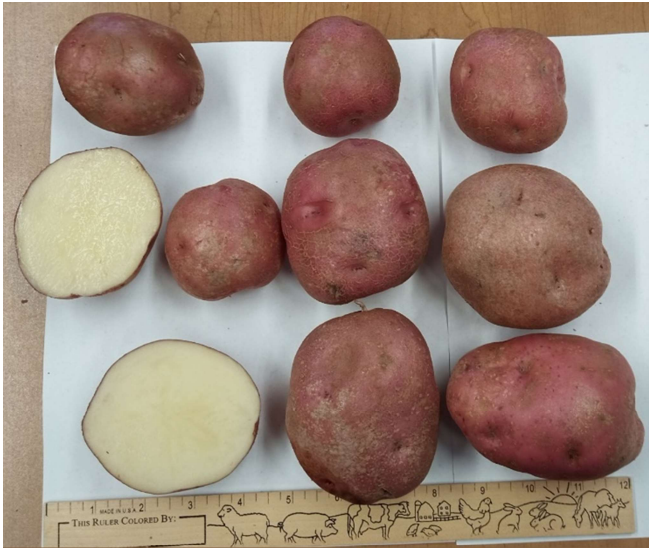
	Yield of Marketable Tubers by Size Distribution (cwt.)			% of Marketable Yield by Size Distribution		
	Chef's (> 3")	#1 "A's" (> 2 1/2")	"B's" (< 2")	Chef's (%)	#1 "A's" (%)	"B's" (%)
<b>Total Marketable Yield (Cwt)<sup>1</sup></b>	<b>5</b>	<b>124</b>	<b>32</b>	<b>3</b>	<b>77</b>	<b>20</b>

# S74-2

- Cornell University
- Red skin, white flesh
- Medium to dark red skin, very nice looking
- Small size, high setting type
- Nice, round shape
- Lots of small A's and B's
- Nice looking



	Yield of Marketable Tubers by Size Distribution (cwt.)			% of Marketable Yield by Size Distribution		
	Chef's (> 3")	#1 "A's" (> 2 1/2")	"B's" (< 2")	Chef's (%)	#1 "A's" (%)	"B's" (%)
<b>Total Marketable Yield (Cwt)<sup>1</sup></b>	<b>0</b>	<b>44</b>	<b>20</b>	<b>0</b>	<b>69</b>	<b>31</b>



MSZ427-3R



NADF113484B-1



NDAF12143-1



NY118



NY160



S74-2

# Red Skin Yellow Flesh Lines



# Baltic Rose

- Childstock Farm
- Red skin, dark yellow flesh
- Lighter red skin color
- Flat round to flat oblong shape
- A little texture to skin, has tiny white spots all over it
- Shallow eyes
- Second highest yielding in 2021, highest yielding in 2020
- Chef's showed some hollow heart, may be better to harvest as large A's
- Culls are mostly knobs and misshapes but there wasn't many in comparison to 2020
- Tubers tend to sprout quickly
- Favorite tasting in 2019



Total Marketable Yield (Cwt) <sup>1</sup>	Yield of Marketable Tubers by Size Distribution (cwt.)			% of Marketable Yield by Size Distribution		
	Chef's (> 3")	#1 "A's" (> 2 1/2")	"B's" (< 2")	Chef's (%)	#1 "A's" (%)	"B's" (%)
<b>242</b>	<b>36</b>	<b>181</b>	<b>25</b>	<b>15</b>	<b>75</b>	<b>10</b>

# MCAA161-1RY

- Michigan State University
- Dark red skin, yellow flesh
- Round shape with some oblong chef's
- Medium eyes
- Skin is very dark and needed to be washed to tell if it was red or purple
- Good size



	Yield of Marketable Tubers by Size Distribution (cwt.)			% of Marketable Yield by Size Distribution		
	Chef's (> 3")	#1 "A's" (> 2 1/2")	"B's" (< 2")	Chef's (%)	#1 "A's" (%)	"B's" (%)
<b>Total Marketable Yield (Cwt)<sup>1</sup></b>	<b>83</b>	<b>121</b>	<b>9</b>	<b>39</b>	<b>57</b>	<b>4</b>



# MSZ416-08RY

- Michigan State University
- Red skin, light yellow flesh
- Medium dark red skin, skin texture mutes the color
- Round, round shape with a few oblongs
- Few shallow eyes
- A lot of growth crack culls
- Good size
- A few starting to sprout when graded



Total Marketable Yield (Cwt) <sup>1</sup>	Yield of Marketable Tubers by Size Distribution (cwt.)			% of Marketable Yield by Size Distribution		
	Chef's (> 3")	#1 "A's" (> 2 1/2")	"B's" (< 2")	Chef's (%)	#1 "A's" (%)	"B's" (%)
<b>121</b>	<b>51</b>	<b>60</b>	<b>11</b>	<b>42</b>	<b>49</b>	<b>9</b>



Baltic Rose

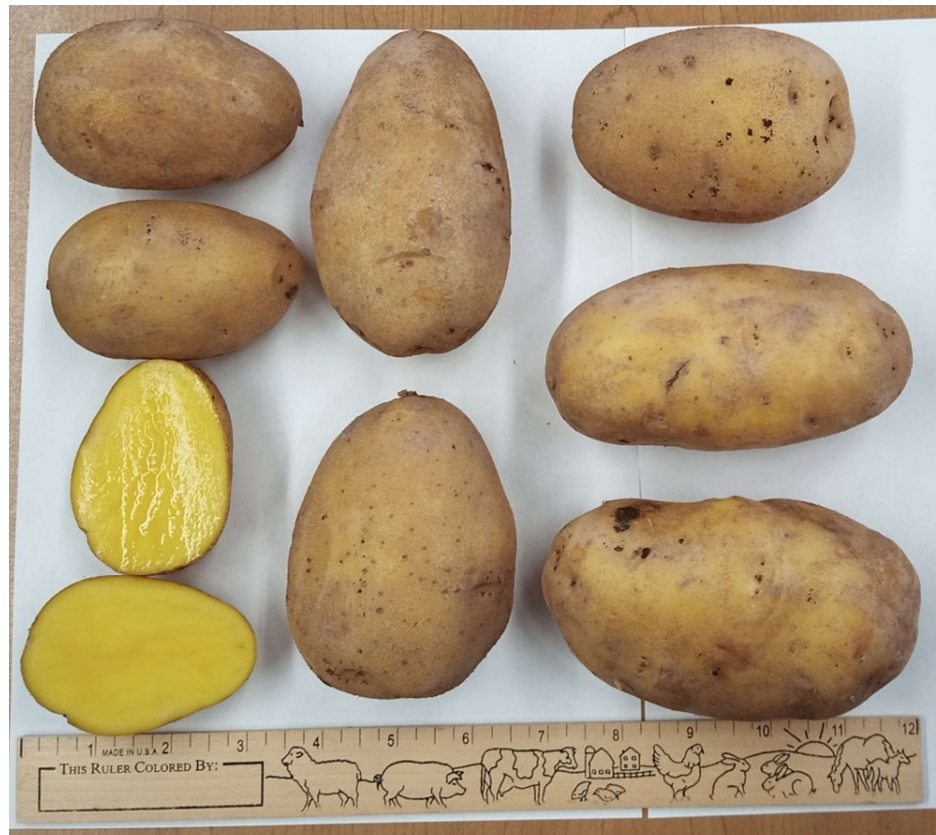


MSAA161-1



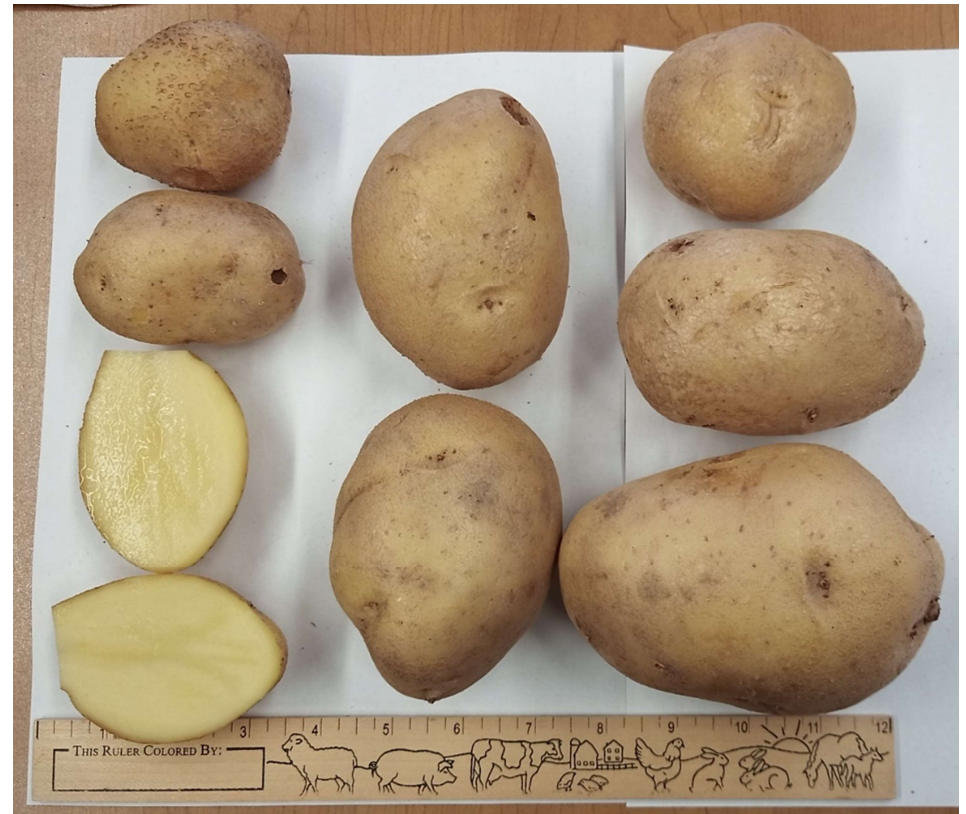
MSZ416-08RY

# White Skin Yellow Flesh Lines



# AF6541-3

- University of Maine
- White skin, light yellow flesh
- Very shallow eyes
- Shape is oblong and round
- Good size, a lot of large A's and chef's



	Yield of Marketable Tubers by Size Distribution (cwt.)			% of Marketable Yield by Size Distribution		
	Chef's (> 3")	#1 "A's" (> 2 1/2")	"B's" (< 2")	Chef's (%)	#1 "A's" (%)	"B's" (%)
<b>Total Marketable Yield (Cwt)<sup>1</sup></b>	<b>104</b>	<b>107</b>	<b>12</b>	<b>47</b>	<b>48</b>	<b>5</b>

# AF6542-16

- University of Maine
- White skin, yellow flesh
- Round to oblong shape
- On the smaller side
- Skin is a nice smooth white
- Few, medium eyes
- A few misshapes



	Yield of Marketable Tubers by Size Distribution (cwt.)			% of Marketable Yield by Size Distribution		
	Chef's (> 3")	#1 "A's" (> 2 1/2")	"B's" (< 2")	Chef's (%)	#1 "A's" (%)	"B's" (%)
<b>Total Marketable Yield (Cwt)<sup>1</sup></b>	<b>14</b>	<b>112</b>	<b>28</b>	<b>9</b>	<b>73</b>	<b>18</b>

# MST252-1Y

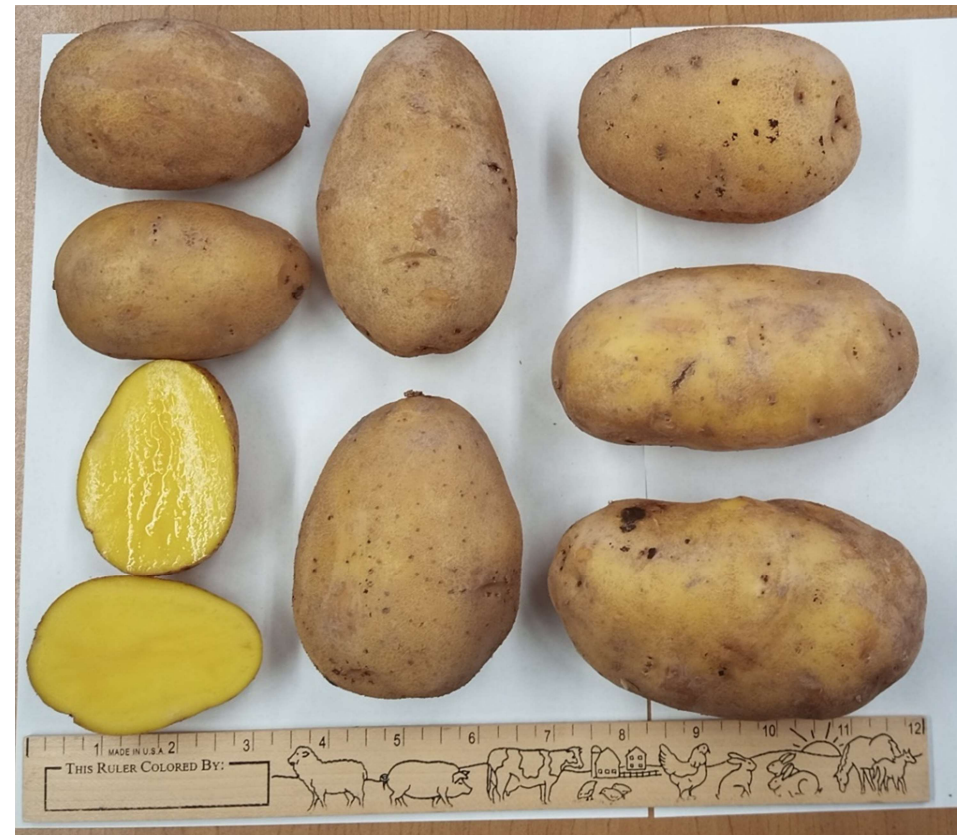
- Michigan State University
- White skin, yellow flesh
- Round shape with some slightly oblong
- Culls were mostly growth cracks
- Had a lot of bacterial soft rot issues as well
- Smooth skin
- Small A's



	Yield of Marketable Tubers by Size Distribution (cwt.)			% of Marketable Yield by Size Distribution		
	Chef's (> 3")	#1 "A's" (> 2 1/2")	"B's" (< 2")	Chef's (%)	#1 "A's" (%)	"B's" (%)
<b>Total Marketable Yield (Cwt)<sup>1</sup></b>	<b>61</b>	<b>110</b>	<b>5</b>	<b>35</b>	<b>63</b>	<b>3</b>

# Natascha

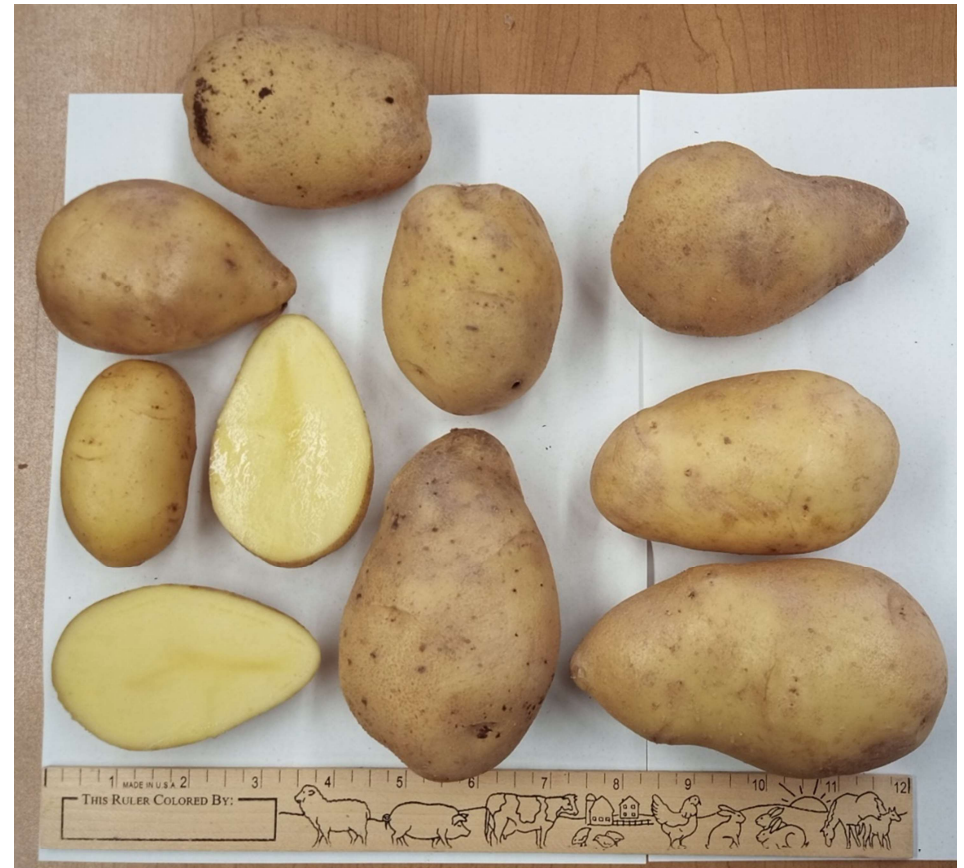
- Childstock Farm
- Bright white skin, dark yellow flesh
- Oblong to slightly round and flat shape, some points
- Skin is smooth
- Decent size, mostly good size A's, nice B's
- Culls are greeners and knobs
- Good yield, overall nice and it has done well in previous trials for yield and taste



	Yield of Marketable Tubers by Size Distribution (cwt.)			% of Marketable Yield by Size Distribution		
	Chef's (> 3")	#1 "A's" (> 2 1/2")	"B's" (< 2")	Chef's (%)	#1 "A's" (%)	"B's" (%)
<b>Total Marketable Yield (Cwt)<sup>1</sup></b>	<b>51</b>	<b>125</b>	<b>21</b>	<b>26</b>	<b>64</b>	<b>11</b>

# R203-1

- Cornell University
- White skin, light yellow flesh
- Oblong shape
- Eyes are raised and a little lumpy
- Mostly smooth skin
- Highest yielding this year
- Good size
- Culls were mostly greeners



	Yield of Marketable Tubers by Size Distribution (cwt.)			% of Marketable Yield by Size Distribution		
	Chef's (> 3")	#1 "A's" (> 2 1/2")	"B's" (< 2")	Chef's (%)	#1 "A's" (%)	"B's" (%)
<b>Total Marketable Yield (Cwt)<sup>1</sup></b>	<b>124</b>	<b>108</b>	<b>14</b>	<b>50</b>	<b>44</b>	<b>6</b>



# R213-2

- Cornell University
- White skin, yellow flesh
- Flatter, slightly oblong shape
- Skin has a little texture
- Shallow eyes
- On the smaller side



	Yield of Marketable Tubers by Size Distribution (cwt.)			% of Marketable Yield by Size Distribution		
	Chef's (> 3")	#1 "A's" (> 2 1/2")	"B's" (< 2")	Chef's (%)	#1 "A's" (%)	"B's" (%)
<b>Total Marketable Yield (Cwt)<sup>1</sup></b>	<b>8</b>	<b>118</b>	<b>27</b>	<b>5</b>	<b>77</b>	<b>18</b>

# WAF13058-1

- University of Maine
- White skin, yellow flesh
- Round round shape.
- Smooth skin
- Eyes are shallow to medium
- Size is inconsistent
- Culls were mostly growth cracks and knobs
- Had a decent amount of scab



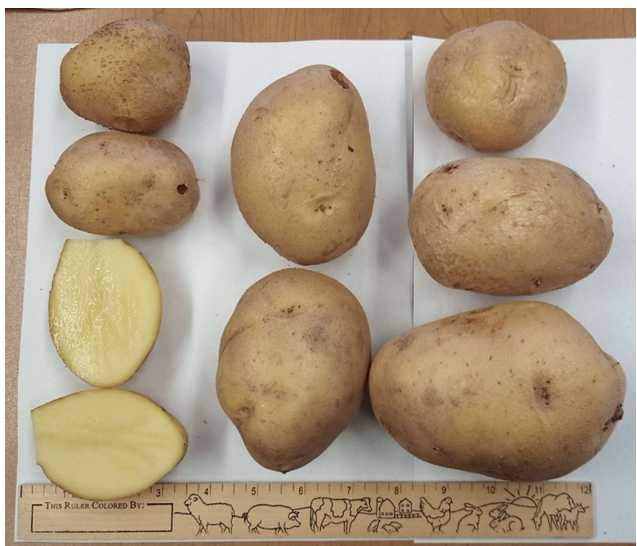
	Yield of Marketable Tubers by Size Distribution (cwt.)			% of Marketable Yield by Size Distribution		
	Chef's (> 3")	#1 "A's" (> 2 1/2")	"B's" (< 2")	Chef's (%)	#1 "A's" (%)	"B's" (%)
<b>Total Marketable Yield (Cwt)<sup>1</sup></b>	<b>73</b>	<b>90</b>	<b>16</b>	<b>41</b>	<b>50</b>	<b>9</b>

# Yukon Gold

- Cornell University
- White skin, yellow flesh
- Skin had a lot of texture which muted the color
- Mostly round with some slightly flattened and oblong
- Good size, decent amount of Chef's and large A's
- Few culls, cracks and misshapes



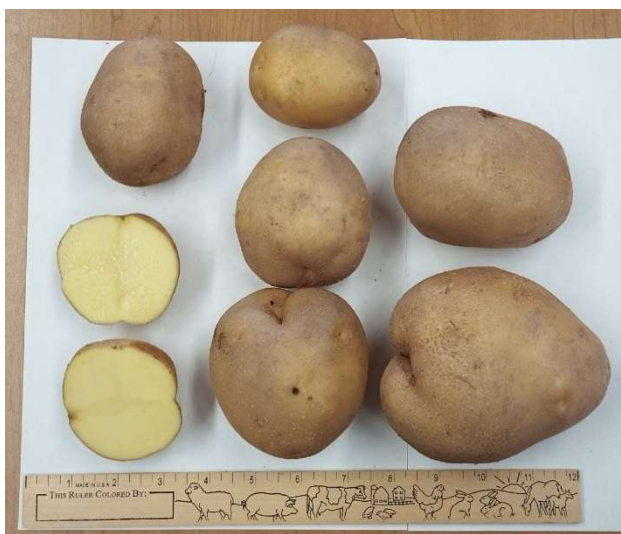
	Yield of Marketable Tubers by Size Distribution (cwt.)			% of Marketable Yield by Size Distribution		
	Chef's (> 3")	#1 "A's" (> 2 1/2")	"B's" (< 2")	Chef's (%)	#1 "A's" (%)	"B's" (%)
<b>Total Marketable Yield (Cwt)<sup>1</sup></b>	<b>58</b>	<b>49</b>	<b>3</b>	<b>53</b>	<b>44</b>	<b>3</b>



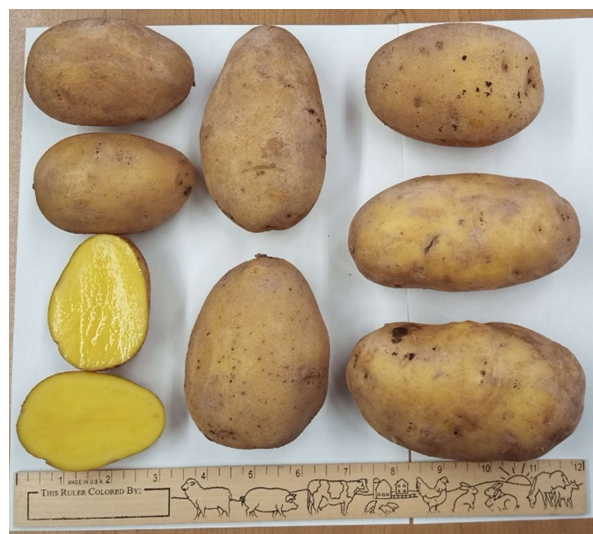
AF6541-3



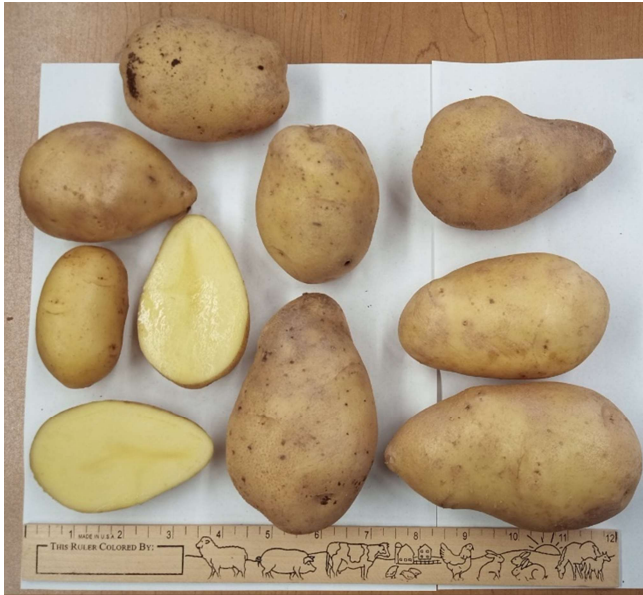
AF6542-16



MST252-1Y



Natascha



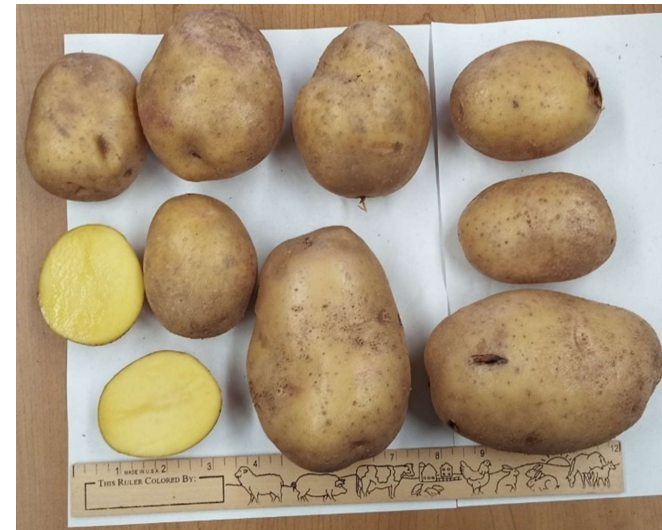
R203-1



R213-2



WAF13058-1



Yukon Gold

# Specialty Lines



# AF5412-3

- University of Maine
- Dark purple skin, starburst purple flesh
- Oblong shape similar to a russet, some points and lumps
- Some weird shapes present
- Sized up well, a lot of Chef's and large A's
- Deep eyes



	Yield of Marketable Tubers by Size Distribution (cwt.)			% of Marketable Yield by Size Distribution		
	Chef's (> 3")	#1 "A's" (> 2 1/2")	"B's" (< 2")	Chef's (%)	#1 "A's" (%)	"B's" (%)
<b>Total Marketable Yield (Cwt)<sup>1</sup></b>	<b>149</b>	<b>61</b>	<b>5</b>	<b>69</b>	<b>28</b>	<b>3</b>

# AF5414-1

- University of Maine
- Dark red skin, rose red/purple flesh
- Consistently high yielding, some years highest yielding but generally excellent
- Mostly oblong shape, some flat some round
- Skin is fairly smooth
- Can be a little a little lumpy but not a major issue
- Good size range, Chef's are very large and A's are also nice
- One of the best tasting in 2018 and 2019
- Flesh stays a bright pink after cooking



Total Marketable Yield (Cwt) <sup>1</sup>	Yield of Marketable Tubers by Size Distribution (cwt.)			% of Marketable Yield by Size Distribution		
	Chef's (> 3")	#1 "A's" (> 2 1/2")	"B's" (< 2")	Chef's (%)	#1 "A's" (%)	"B's" (%)
<b>196</b>	<b>76</b>	<b>110</b>	<b>10</b>	<b>39</b>	<b>58</b>	<b>5</b>



# AW081124P/Y

- University of Wisconsin-Madison
- Dark purple skin, dark yellow flesh
- Very round shape
- Consistent shape and size
- On the smaller side, small A's and B's



	Yield of Marketable Tubers by Size Distribution (cwt.)			% of Marketable Yield by Size Distribution		
	Chef's (> 3")	#1 "A's" (> 2 1/2")	"B's" (< 2")	Chef's (%)	#1 "A's" (%)	"B's" (%)
<b>Total Marketable Yield (Cwt)<sup>1</sup></b>	<b>8</b>	<b>158</b>	<b>51</b>	<b>4</b>	<b>73</b>	<b>24</b>

# MCAA101-1

- Michigan State University
- Dark red skin, pink flesh
- Variable shape, some round, some oblong, especially larger tubers
- Skin is really nice color
- Medium eyes
- Good size
- Lot's of large A's that are really nice



Total Marketable Yield (Cwt) <sup>1</sup>	Yield of Marketable Tubers by Size Distribution (cwt.)			% of Marketable Yield by Size Distribution		
	Chef's (> 3")	#1 "A's" (> 2 1/2")	"B's" (< 2")	Chef's (%)	#1 "A's" (%)	"B's" (%)
<b>210</b>	<b>45</b>	<b>151</b>	<b>14</b>	<b>21</b>	<b>72</b>	<b>7</b>

# MSZ109-08PP

- Michigan State University
- Purple skin, dark purple flesh
- Round to slightly oblong shape
- A bit lumpy and a few misshapes
- Shallow to raised eyes
- Skinned badly on the grader
- Not super high yielding but a really nice potato



Total Marketable Yield (Cwt) <sup>1</sup>	Yield of Marketable Tubers by Size Distribution (cwt.)			% of Marketable Yield by Size Distribution		
	Chef's (> 3")	#1 "A's" (> 2 1/2")	"B's" (< 2")	Chef's (%)	#1 "A's" (%)	"B's" (%)
<b>133</b>	<b>33</b>	<b>91</b>	<b>9</b>	<b>25</b>	<b>68</b>	<b>7</b>

# MSZ413-6P

- Michigan State University
- Purple skin, white flesh
- Nice color
- Round and flat shape, some slightly oblong
- Good yielding, nice size range
- Very few culls
- Skinned a bit on the grader
- Shallow eyes
- A lot of large A's



	Yield of Marketable Tubers by Size Distribution (cwt.)			% of Marketable Yield by Size Distribution		
	Chef's (> 3")	#1 "A's" (> 2 1/2")	"B's" (< 2")	Chef's (%)	#1 "A's" (%)	"B's" (%)
<b>Total Marketable Yield (Cwt)<sup>1</sup></b>	<b>11</b>	<b>122</b>	<b>9</b>	<b>8</b>	<b>86</b>	<b>7</b>

# WI6050-3P/Y

- University of Wisconsin-Madison
- Dark purple skin, light yellow flesh
- Shape is variable, round rounds to oblongs
- Decent size, a lot of nice A's, not a lot of chef's
- No major cull issues



	Yield of Marketable Tubers by Size Distribution (cwt.)			% of Marketable Yield by Size Distribution		
	Chef's (> 3")	#1 "A's" (> 2 1/2")	"B's" (< 2")	Chef's (%)	#1 "A's" (%)	"B's" (%)
<b>Total Marketable Yield (Cwt)<sup>1</sup></b>	<b>4</b>	<b>114</b>	<b>37</b>	<b>3</b>	<b>73</b>	<b>24</b>



AF5412-3



AF5414-1



AW081124P/Y



MSAA101-1



MSZ109-08PP

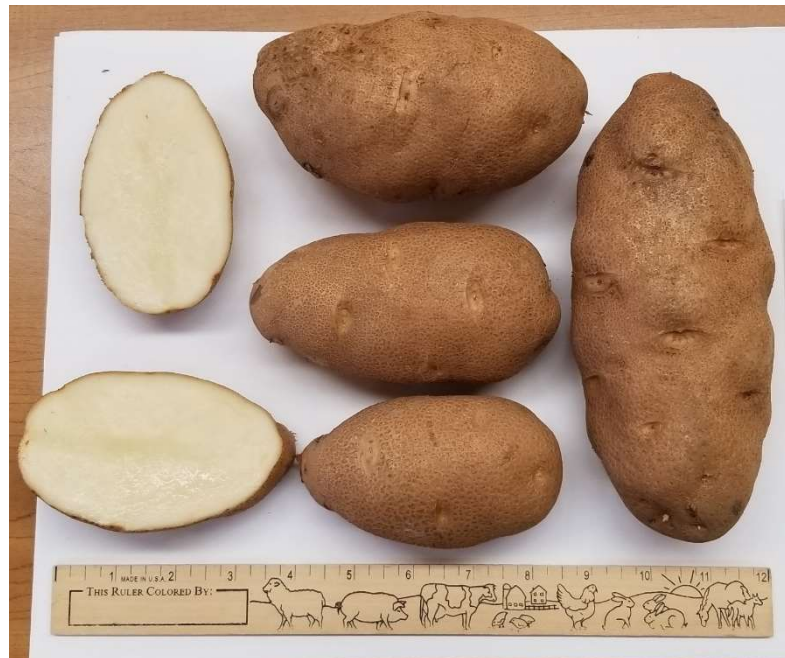


MSZ413-6P



WI6050-3P/Y

# Russets





# AF3362-1

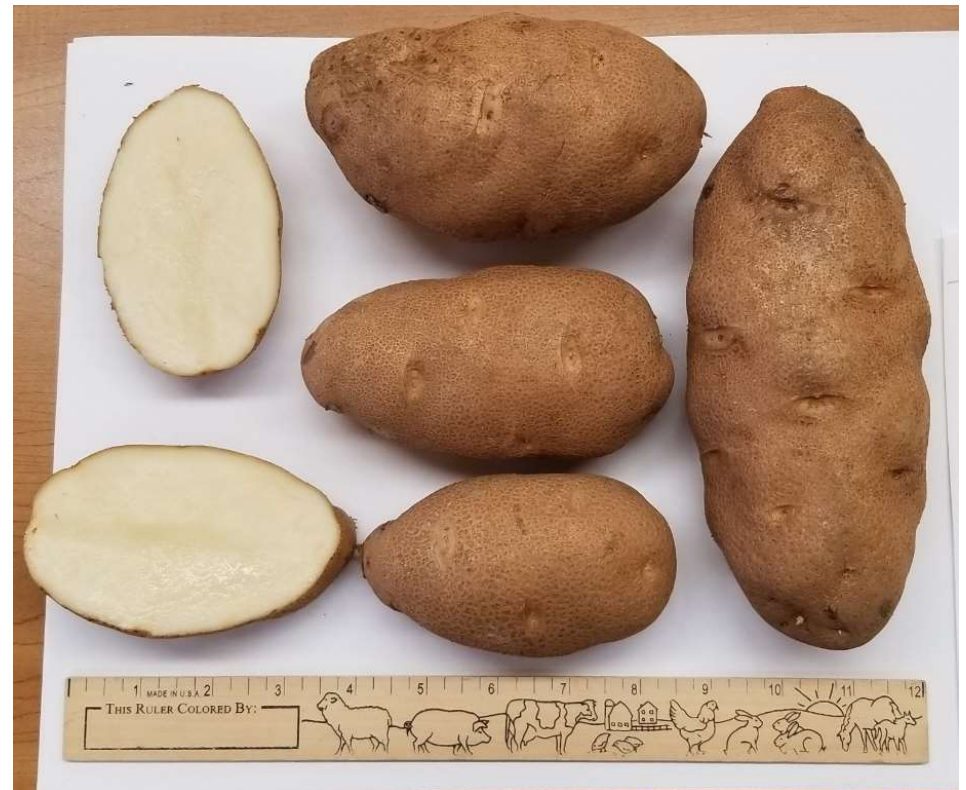
- Trade name is Caribou Russet
- University of Maine
- Oblong, round russet shape
- In 2018, had some issues with misshapes and internal issues but did well in 2019, 2020 and 2021
- Lots of chefs, large A's and large B's, consistent and nice
- Some growth cracks and a few knos and misshapes



Total Marketable Yield (Cwt) <sup>1</sup>	Yield of Marketable Tubers by Size Distribution (cwt.)			% of Marketable Yield by Size Distribution		
	Chef's (> 3")	#1 "A's" (> 2 1/2")	"B's" (< 2")	Chef's (%)	#1 "A's" (%)	"B's" (%)
<b>162</b>	<b>112</b>	<b>45</b>	<b>5</b>	<b>69</b>	<b>28</b>	<b>3</b>

# AF6338-6

- University of Maine
- Oblong, round russet shape
- Very pretty looking
- Heavy russeting on the skin
- Some growth cracks, with some being very deep
- Huge size, a lot of chef's
- Hollow heart issues, especially in the rounder chef's
- Shallow eyes



	Yield of Marketable Tubers by Size Distribution (cwt.)			% of Marketable Yield by Size Distribution		
	Chef's (> 3")	#1 "A's" (> 2 1/2")	"B's" (< 2")	Chef's (%)	#1 "A's" (%)	"B's" (%)
<b>Total Marketable Yield (Cwt)<sup>1</sup></b>	<b>98</b>	<b>57</b>	<b>9</b>	<b>60</b>	<b>35</b>	<b>5</b>

Thank you to our farm collaborator Samascott Orchards

And thank you to our seed suppliers:

Ralph Child, Childstock Farms, Inc.

Dr. Greg Porter, University of Maine Potato Breeding Program

Dr. Walter De Jong, Cornell University Potato Breeding Program

Dr. David Douches, Michigan State University Potato Breeding Program

Dr. Jeffrey Endelman, University of Wisconsin-Madison Plant Breeding and Plant Genetics

**The Eastern New York Commercial Horticulture Program is a Cornell Cooperative Extension Partnership between Cornell University and the CCE Associations in the 17 Eastern New York counties.**

