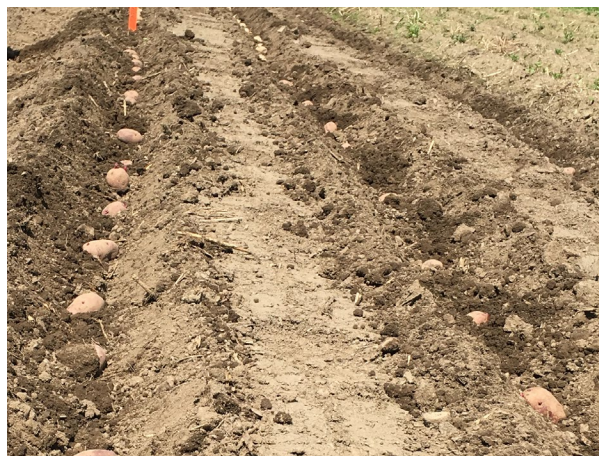


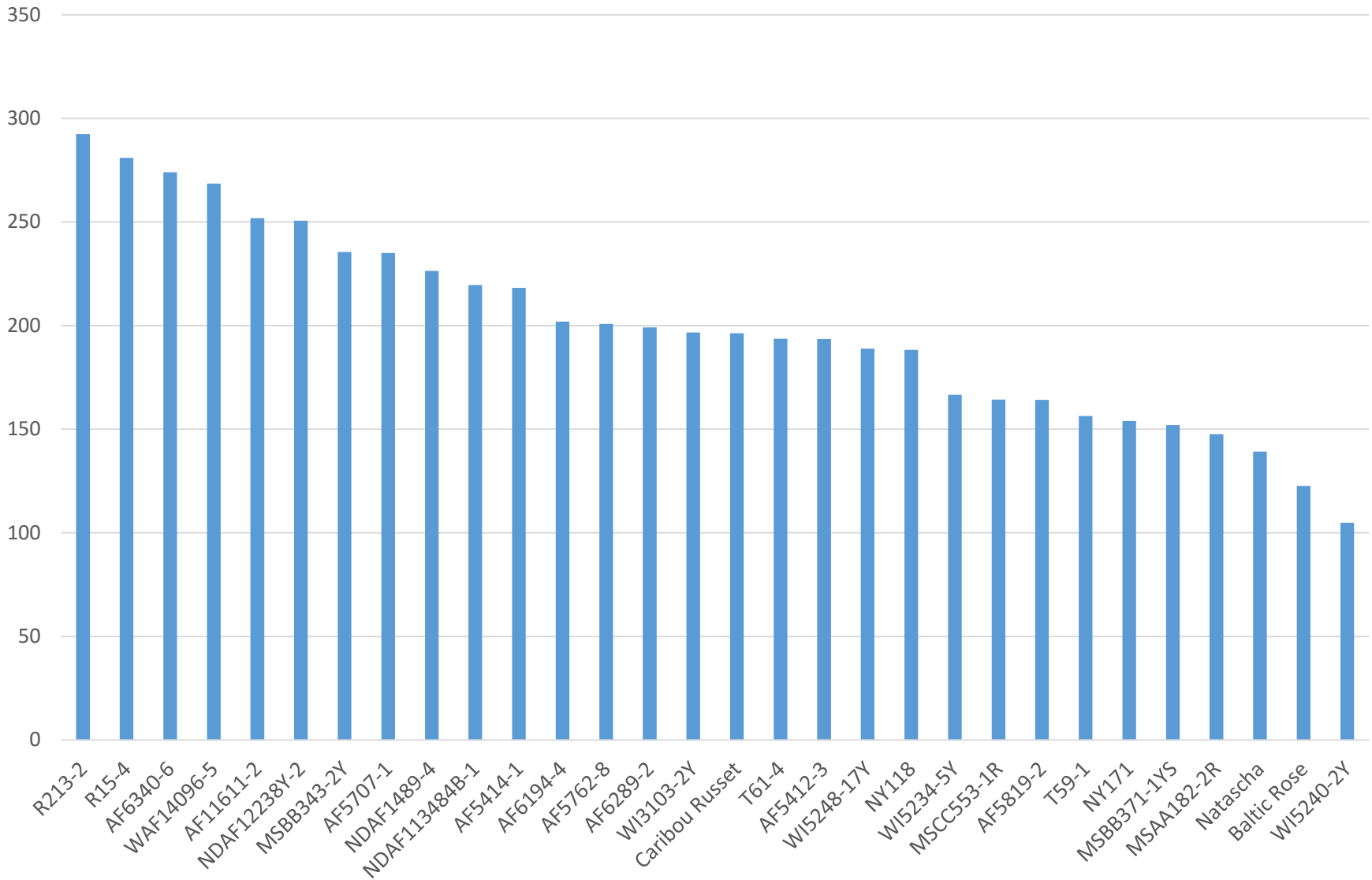
# Cornell Cooperative Extension

## Eastern NY Commercial Horticulture Program

# 2022 Potato Variety Trial



# Total Marketable Yield (Cwt)



# Trial Information

- Columbia County
- Conventional
- Row spacing: 30", in row spacing: 12"
- Planted 4/29/22
- Irrigated
- Harvested October 11th and graded October 28<sup>th</sup> and November 1st using grader with chains set at various lengths as seen in data
- Taste testing information may come later

# White Skin, White Flesh Lines





# AF5819-2

- University of Maine
- White skin, white flesh
- Mostly rounded shape
- Few shallow eyes
- Good size, a lot of large A's and chef's



	Yield of Marketable Tubers by Size Distribution (cwt.)			% of Marketable Yield by Size Distribution		
	Chef's (> 3")	#1 "A's" (> 2 1/2")	"B's" (< 2")	Chef's (%)	#1 "A's" (%)	"B's" (%)
<b>Total Marketable Yield (Cwt)<sup>1</sup></b>	<b>52</b>	<b>108</b>	<b>4</b>	<b>32</b>	<b>65</b>	<b>3</b>

# AF6194-4

- University of Maine
- White skin, white flesh
- Round to slightly oblong shape
- Few, shallow eyes
- Good size, lots of large A's
- A few cracked tubers but most culls were greens



	Yield of Marketable Tubers by Size Distribution (cwt.)			% of Marketable Yield by Size Distribution		
	Chef's (> 3")	#1 "A's" (> 2 1/2")	"B's" (< 2")	Chef's (%)	#1 "A's" (%)	"B's" (%)
<b>Total Marketable Yield (Cwt)<sup>1</sup></b>	<b>108</b>	<b>165</b>	<b>8</b>	<b>38</b>	<b>59</b>	<b>3</b>

# NY171

- Cornell University
- White skin with dark purple splashes, white flesh
- Oblong and flat shape
- Very nice looking overall
- Skin is smooth and bright
- Some eyes are raised but mostly shallow
- Some variation in sizes, chef's, A's and B's all present and look nice
- Culls were mostly greeners but can be more difficult to grade out due to blotch



Total Marketable Yield (Cwt) <sup>1</sup>	Yield of Marketable Tubers by Size Distribution (cwt.)			% of Marketable Yield by Size Distribution		
	Chef's (> 3")	#1 "A's" (> 2 1/2")	"B's" (< 2")	Chef's (%)	#1 "A's" (%)	"B's" (%)
<b>154</b>	<b>77</b>	<b>67</b>	<b>9</b>	<b>50</b>	<b>44</b>	<b>6</b>



# R15-4

- Cornell University
- White skin, white flesh
- Shape is flattened and oblong, some of them are lumpy and inconsistent in shape
- Skin has a little texture
- A few cracks
- Shallow eyes
- Culls were mostly greeners with some cracks
- Great yield and good size



	Yield of Marketable Tubers by Size Distribution (cwt.)			% of Marketable Yield by Size Distribution		
	Chef's (> 3")	#1 "A's" (> 2 1/2")	"B's" (< 2")	Chef's (%)	#1 "A's" (%)	"B's" (%)
<b>Total Marketable Yield (Cwt)<sup>1</sup></b>	<b>108</b>	<b>165</b>	<b>8</b>	<b>38</b>	<b>59</b>	<b>3</b>



AF5819-2



AF6194-4



NY171



R15-4

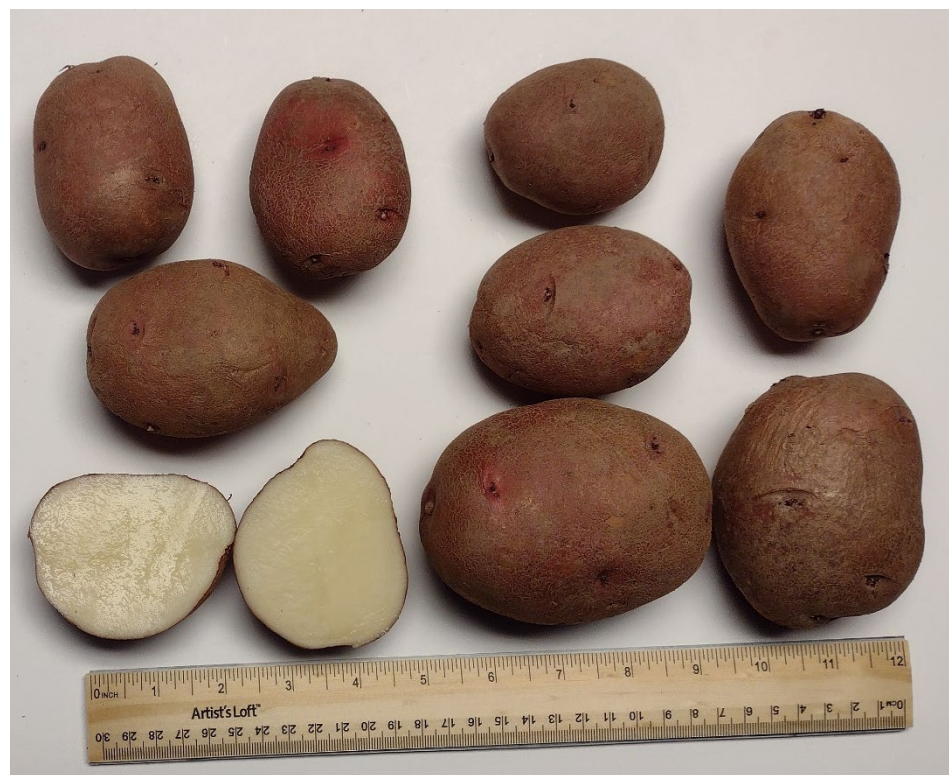


# Red Skin White Flesh Lines



# AF6289-2

- University of Maine
- Red skin, white flesh
- Wrinkled skin is due to post-grading storage that was less than ideal
- Oblong to round shape
- Shallow eyes
- Uniform in size and shape



	Yield of Marketable Tubers by Size Distribution (cwt.)			% of Marketable Yield by Size Distribution		
	Chef's (> 3")	#1 "A's" (> 2 1/2")	"B's" (< 2")	Chef's (%)	#1 "A's" (%)	"B's" (%)
<b>Total Marketable Yield (Cwt)<sup>1</sup></b>	<b>68</b>	<b>125</b>	<b>7</b>	<b>34</b>	<b>63</b>	<b>3</b>

# NDAF113484B-1

- University of Maine
- Red skin, white flesh
- Liked this variety in past year's trials as well
- Round, round shape that was very nice
- Skin can be a little scruffy
- Shallow eyes
- Very few culls
- Good size and variety of sizes
- Lots of really big A's and B's also nice
- Wrinkled skin is due to post-grading storage that was not ideal



	Yield of Marketable Tubers by Size Distribution (cwt.)			% of Marketable Yield by Size Distribution		
	Chef's (> 3")	#1 "A's" (> 2 1/2")	"B's" (< 2")	Chef's (%)	#1 "A's" (%)	"B's" (%)
<b>Total Marketable Yield (Cwt)<sup>1</sup></b>	<b>64</b>	<b>147</b>	<b>9</b>	<b>29</b>	<b>67</b>	<b>4</b>



# NDAF12238Y-2

- University of Maine
- Red skin, white flesh
- Nice dark red color
- Medium eyes
- Round shape
- A few growth cracks but not major
- Wrinkled skin is due to post-grading storage that was not ideal



	Yield of Marketable Tubers by Size Distribution (cwt.)			% of Marketable Yield by Size Distribution		
	Chef's (> 3")	#1 "A's" (> 2 1/2")	"B's" (< 2")	Chef's (%)	#1 "A's" (%)	"B's" (%)
<b>Total Marketable Yield (Cwt)<sup>1</sup></b>	<b>58</b>	<b>174</b>	<b>18</b>	<b>23</b>	<b>70</b>	<b>7</b>

# NY118

- Cornell University
- Red skin, white flesh
- Nice light red skin
- Oblong to round shape
- Chef's and A's are round to slightly flattened, B's are round
- Consistent producer even if the plants don't look healthy
- Medium eyes
- Uniform in size, mostly A's and some chef's



	Yield of Marketable Tubers by Size Distribution (cwt.)			% of Marketable Yield by Size Distribution		
	Chef's (> 3")	#1 "A's" (> 2 1/2")	"B's" (< 2")	Chef's (%)	#1 "A's" (%)	"B's" (%)
<b>Total Marketable Yield (Cwt)<sup>1</sup></b>	<b>115</b>	<b>70</b>	<b>3</b>	<b>61</b>	<b>37</b>	<b>2</b>



# MSCC553-1R

- Red skin, white flesh
- Medium to dark red skin, very nice looking
- Good size with lots of big chef's and A's
- Odd round eyes
- Bright white flesh



	Yield of Marketable Tubers by Size Distribution (cwt.)			% of Marketable Yield by Size Distribution		
	Chef's (> 3")	#1 "A's" (> 2 1/2")	"B's" (< 2")	Chef's (%)	#1 "A's" (%)	"B's" (%)
<b>Total Marketable Yield (Cwt)<sup>1</sup></b>	<b>38</b>	<b>116</b>	<b>11</b>	<b>23</b>	<b>71</b>	<b>7</b>

# MCAA182-2R

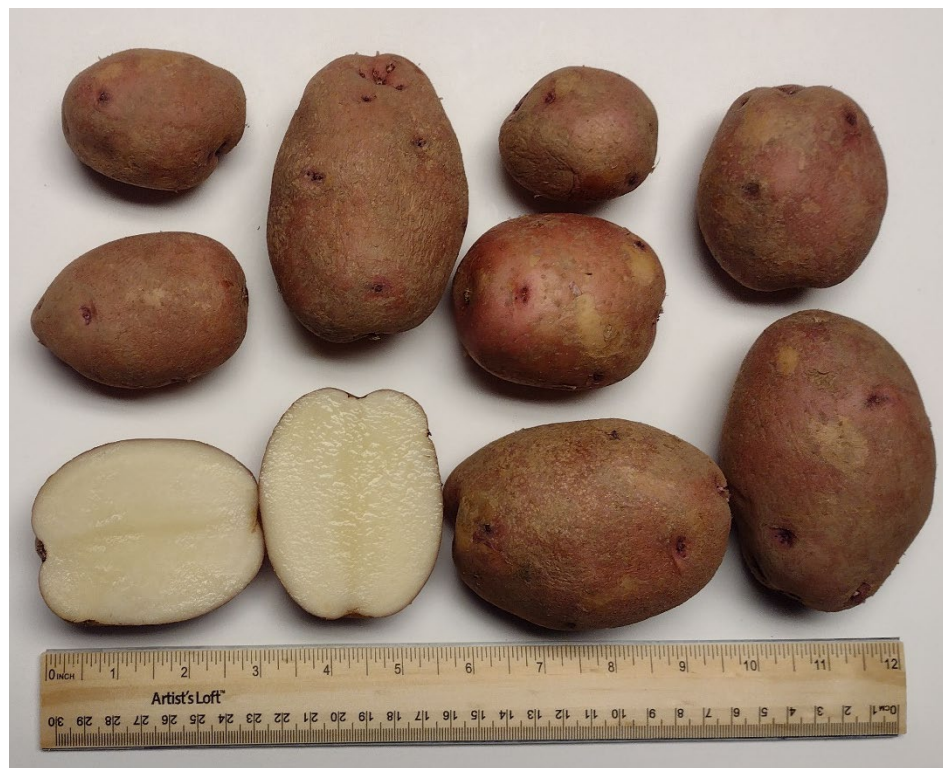
- Red skin, white flesh
- Really nice dark red skin
- Not super large but a good range
- Round shape
- Shallow eyes
- Bright white skin



	Yield of Marketable Tubers by Size Distribution (cwt.)			% of Marketable Yield by Size Distribution		
	Chef's (> 3")	#1 "A's" (> 2 1/2")	"B's" (< 2")	Chef's (%)	#1 "A's" (%)	"B's" (%)
<b>Total Marketable Yield (Cwt)<sup>1</sup></b>	<b>4</b>	<b>113</b>	<b>31</b>	<b>3</b>	<b>76</b>	<b>21</b>

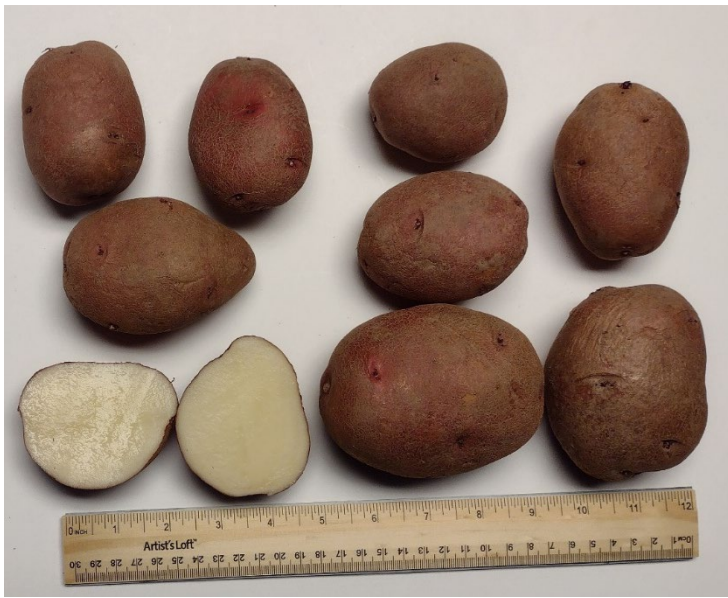
# T59-1

- Cornell University
- Pink skin, white flesh
- Skin is slightly textured
- Medium eyes
- Good amount of chef's and large A's
- Round oblong shape

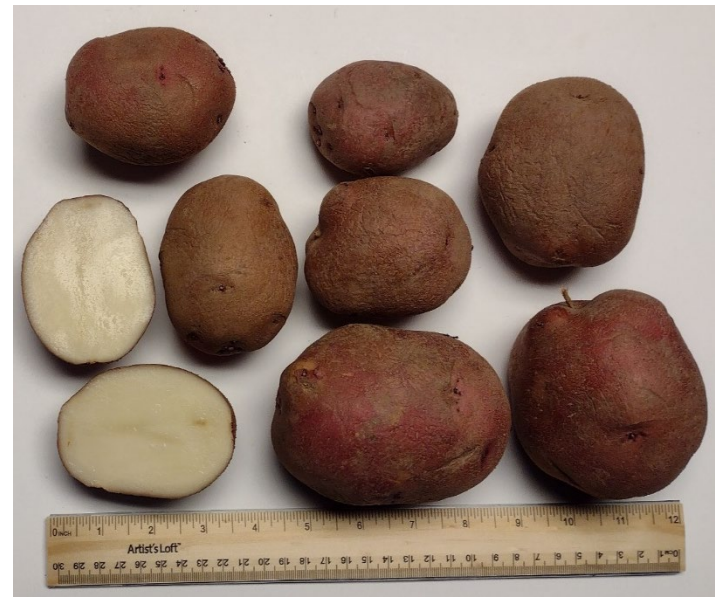


	Yield of Marketable Tubers by Size Distribution (cwt.)			% of Marketable Yield by Size Distribution		
	Chef's (> 3")	#1 "A's" (> 2 1/2")	"B's" (< 2")	Chef's (%)	#1 "A's" (%)	"B's" (%)
<b>Total Marketable Yield (Cwt)<sup>1</sup></b>	<b>24</b>	<b>120</b>	<b>12</b>	<b>15</b>	<b>77</b>	<b>8</b>





AF6289-2



NDAF113484B-1



NDAF12238Y-2



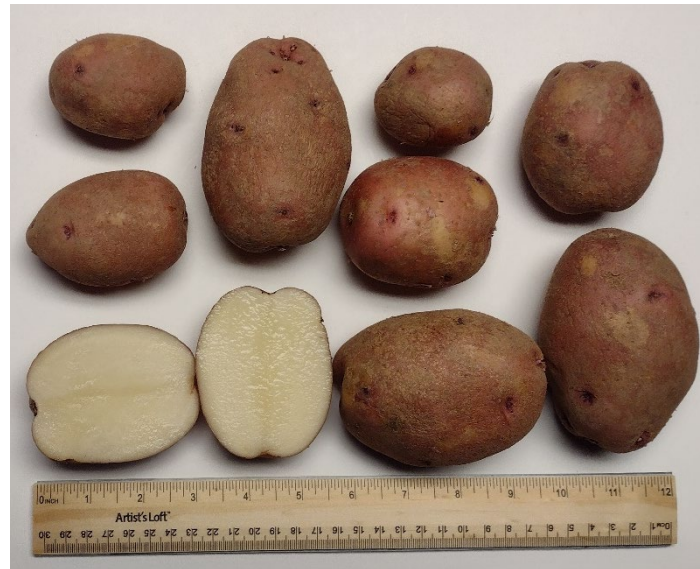
NY118



MSCC553-1R



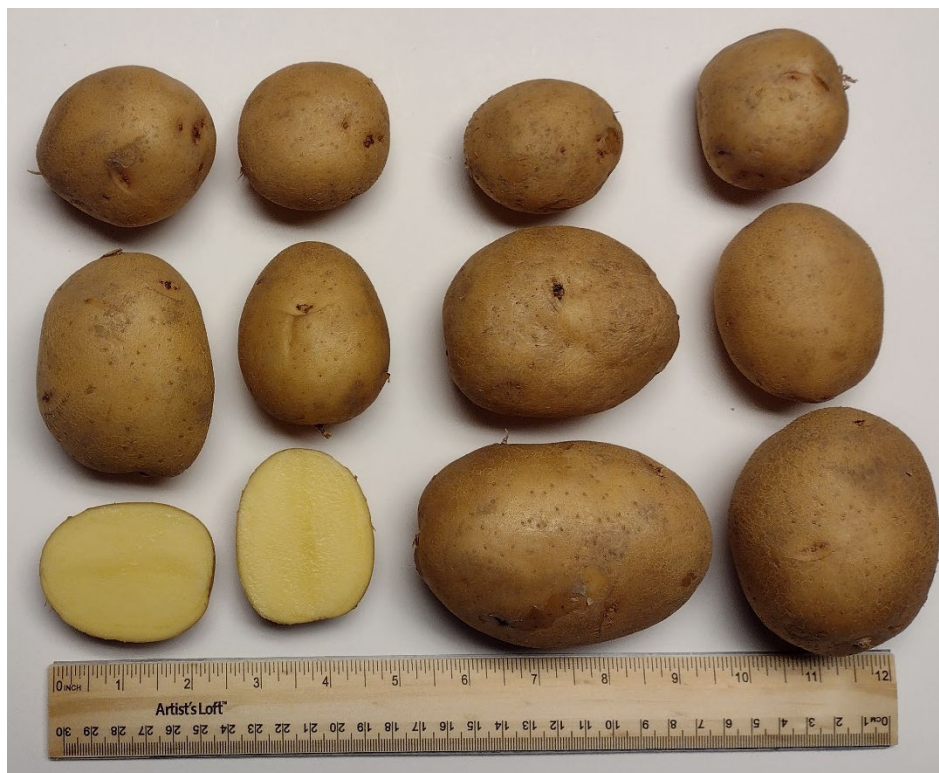
MSA182-2R



T59-1



# White Skin Yellow Flesh Lines



# AF11611-2

- University of Maine
- White with pink splotches and yellow flesh
- Oblong to round shape
- Shallow eyes
- Dark yellow flesh



	Yield of Marketable Tubers by Size Distribution (cwt.)			% of Marketable Yield by Size Distribution		
	Chef's (> 3")	#1 "A's" (> 2 1/2")	"B's" (< 2")	Chef's (%)	#1 "A's" (%)	"B's" (%)
<b>Total Marketable Yield (Cwt)<sup>1</sup></b>	<b>38</b>	<b>187</b>	<b>26</b>	<b>15</b>	<b>74</b>	<b>10</b>

# MSBB343-2Y

- Michigan State University
- White skin, yellow flesh
- Very round shape
- Good size with lots of chef's
- A lot of growth crack culls
- Skin has a little texture



	Yield of Marketable Tubers by Size Distribution (cwt.)			% of Marketable Yield by Size Distribution		
	Chef's (> 3")	#1 "A's" (> 2 1/2")	"B's" (< 2")	Chef's (%)	#1 "A's" (%)	"B's" (%)
<b>Total Marketable Yield (Cwt)<sup>1</sup></b>	<b>119</b>	<b>109</b>	<b>8</b>	<b>51</b>	<b>46</b>	<b>3</b>



# MSBB371-1YS

- University of Michigan
- White skin with purple blotches, creamy yellow flesh
- Round to flat shape with some oblongs
- Shallow eyes
- Good size with lots of large A's



	Yield of Marketable Tubers by Size Distribution (cwt.)			% of Marketable Yield by Size Distribution		
	Chef's (> 3")	#1 "A's" (> 2 1/2")	"B's" (< 2")	Chef's (%)	#1 "A's" (%)	"B's" (%)
<b>Total Marketable Yield (Cwt)<sup>1</sup></b>	<b>21</b>	<b>122</b>	<b>9</b>	<b>14</b>	<b>80</b>	<b>6</b>

# Natascha

- Childstock Farm
- Bright white skin, dark yellow flesh
- Oblong to slightly round and flat shape, some points
- Skin is smooth
- Decent size, mostly good size A's, nice B's
- Culls are greeners and knobs
- Good yield, overall nice and it has done well in previous trials for yield and taste



	Yield of Marketable Tubers by Size Distribution (cwt.)			% of Marketable Yield by Size Distribution		
	Chef's (> 3")	#1 "A's" (> 2 1/2")	"B's" (< 2")	Chef's (%)	#1 "A's" (%)	"B's" (%)
<b>Total Marketable Yield (Cwt)<sup>1</sup></b>	<b>38</b>	<b>89</b>	<b>12</b>	<b>27</b>	<b>64</b>	<b>9</b>



# NDAF1489-4

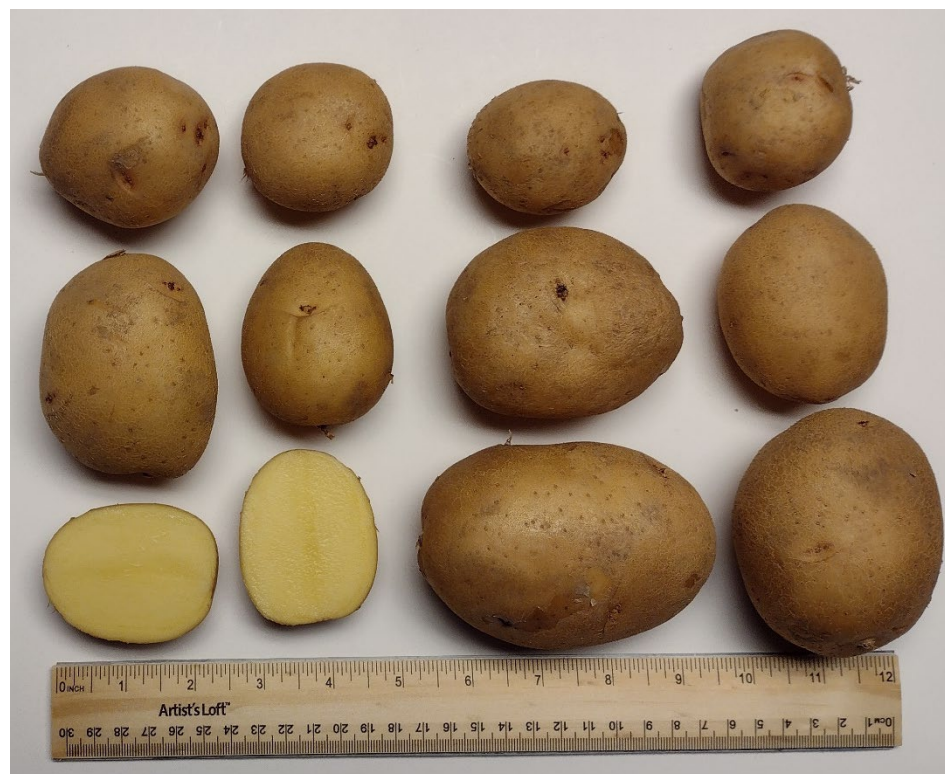
- University of Maine
- White skin with purple splotches, yellow flesh
- Size is impressive with lots of Large A's
- Shape is round to flat oblong
- Smooth skin
- Lots of shallow or slightly raised eyes
- Small amount of rhizoctonia on the stem end



Total Marketable Yield (Cwt) <sup>1</sup>	Yield of Marketable Tubers by Size Distribution (cwt.)			% of Marketable Yield by Size Distribution		
	Chef's (> 3")	#1 "A's" (> 2 1/2")	"B's" (< 2")	Chef's (%)	#1 "A's" (%)	"B's" (%)
<b>226</b>	<b>30</b>	<b>177</b>	<b>19</b>	<b>13</b>	<b>78</b>	<b>8</b>

# R213-2

- Cornell University
- White skin, yellow flesh
- Flatter, slightly oblong shape
- Skin has a little texture
- Shallow eyes
- On the smaller side
- Oblong shape
- Uniform in shape and size
- Great yield
- Highest yielding in 2022



	Yield of Marketable Tubers by Size Distribution (cwt.)			% of Marketable Yield by Size Distribution		
	Chef's (> 3")	#1 "A's" (> 2 1/2")	"B's" (< 2")	Chef's (%)	#1 "A's" (%)	"B's" (%)
<b>Total Marketable Yield (Cwt)<sup>1</sup></b>	<b>47</b>	<b>223</b>	<b>23</b>	<b>16</b>	<b>76</b>	<b>8</b>

# T61-4

- Cornell University
- White skin, light yellow flesh
- Fingerling, oblong and thin
- Skin slightly textured similar to Yukon Gold
- Very shallow eyes
- Did catch on the grader chains



	Yield of Marketable Tubers by Size Distribution (cwt.)			% of Marketable Yield by Size Distribution		
	Chef's (> 3")	#1 "A's" (> 2 1/2")	"B's" (< 2")	Chef's (%)	#1 "A's" (%)	"B's" (%)
<b>Total Marketable Yield (Cwt)<sup>1</sup></b>	<b>0</b>	<b>106</b>	<b>87</b>	<b>0</b>	<b>55</b>	<b>45</b>



# W13103-2Y

- University of Wisconsin
- White skin, yellow flesh
- Good size
- Smooth skin
- Starting to sprout when graded
- Round shape



	Yield of Marketable Tubers by Size Distribution (cwt.)			% of Marketable Yield by Size Distribution		
	Chef's (> 3")	#1 "A's" (> 2 1/2")	"B's" (< 2")	Chef's (%)	#1 "A's" (%)	"B's" (%)
<b>Total Marketable Yield (Cwt)<sup>1</sup></b>	<b>42</b>	<b>136</b>	<b>18</b>	<b>21</b>	<b>69</b>	<b>9</b>

# W15234-5Y

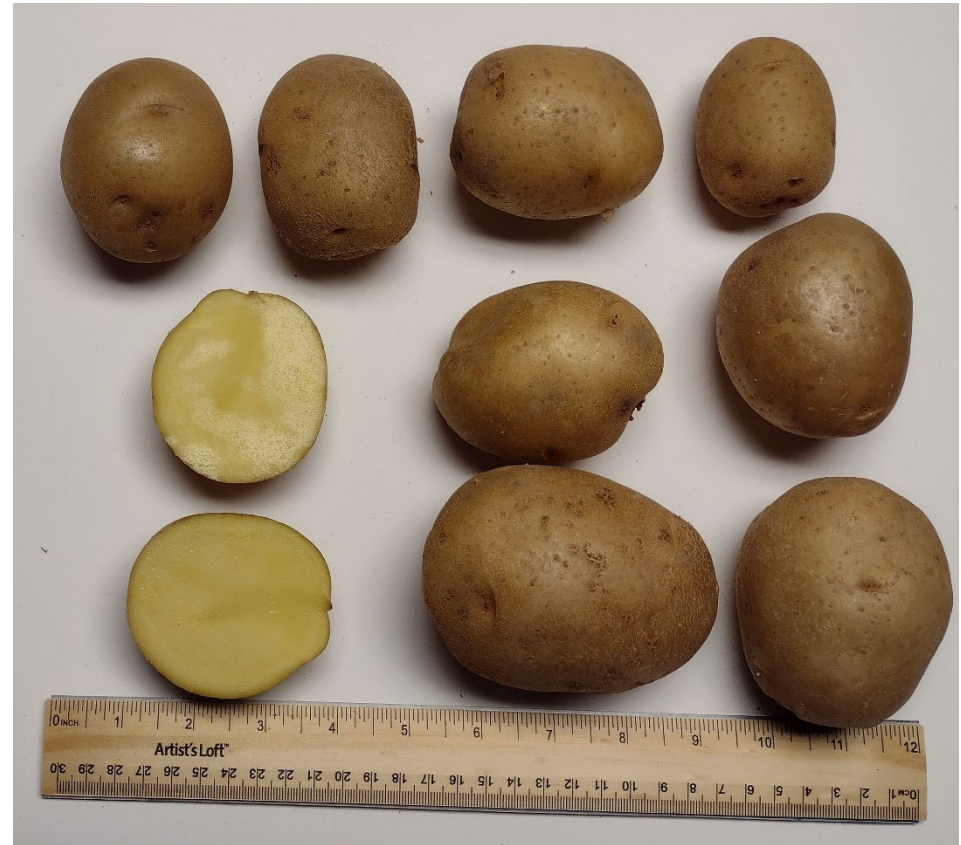
- University of Wisconsin
- White skin, dark yellow flesh
- Round to slightly oblong shape
- Fair amount of chef's
- Skin is buff
- Shallow eyes
- Unfortunately, had internal browning issues



	Yield of Marketable Tubers by Size Distribution (cwt.)			% of Marketable Yield by Size Distribution		
	Chef's (> 3")	#1 "A's" (> 2 1/2")	"B's" (< 2")	Chef's (%)	#1 "A's" (%)	"B's" (%)
<b>Total Marketable Yield (Cwt)<sup>1</sup></b>	<b>12</b>	<b>125</b>	<b>32</b>	<b>6</b>	<b>75</b>	<b>19</b>

# W15240-2Y

- University of Wisconsin
- White skin, yellow flesh
- Few shallow eyes
- Round to oblong shape
- Nice A's
- Unfortunately it had internal browning issues



	Yield of Marketable Tubers by Size Distribution (cwt.)			% of Marketable Yield by Size Distribution		
	Chef's (> 3")	#1 "A's" (> 2 1/2")	"B's" (< 2")	Chef's (%)	#1 "A's" (%)	"B's" (%)
<b>Total Marketable Yield (Cwt)<sup>1</sup></b>	<b>12</b>	<b>82</b>	<b>11</b>	<b>11</b>	<b>78</b>	<b>11</b>



# W15248-17Y

- University of Wisconsin
- White skin, yellow flesh
- Round shape
- Skin has some texture
- Mostly A's with very few chef's



	Yield of Marketable Tubers by Size Distribution (cwt.)			% of Marketable Yield by Size Distribution		
	Chef's (> 3")	#1 "A's" (> 2 1/2")	"B's" (< 2")	Chef's (%)	#1 "A's" (%)	"B's" (%)
<b>Total Marketable Yield (Cwt)<sup>1</sup></b>	<b>12</b>	<b>165</b>	<b>12</b>	<b>6</b>	<b>87</b>	<b>7</b>

# WAF14096-5

- University of Wisconsin
- White skin, yellow flesh
- Round shape
- Good size, lots of large A's
- Skin has a little texture to it
- Shallow eyes



	Yield of Marketable Tubers by Size Distribution (cwt.)			% of Marketable Yield by Size Distribution		
	Chef's (> 3")	#1 "A's" (> 2 1/2")	"B's" (< 2")	Chef's (%)	#1 "A's" (%)	"B's" (%)
<b>Total Marketable Yield (Cwt)<sup>1</sup></b>	<b>51</b>	<b>216</b>	<b>2</b>	<b>16</b>	<b>80</b>	<b>1</b>





AF11611-2



MSBB242-2Y



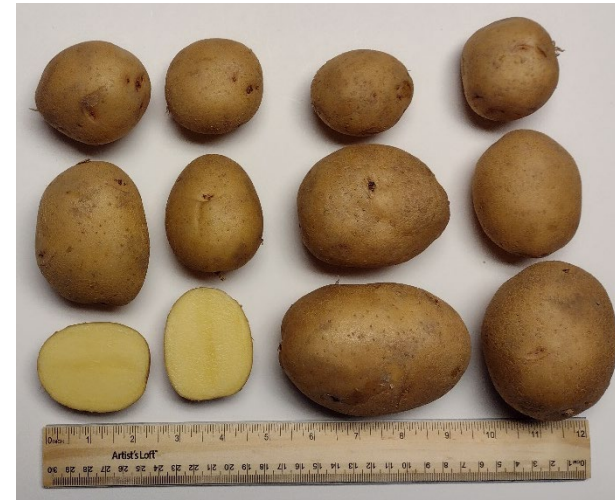
MSBB371-1YS



Natascha



NDAF1489-4



R213-2





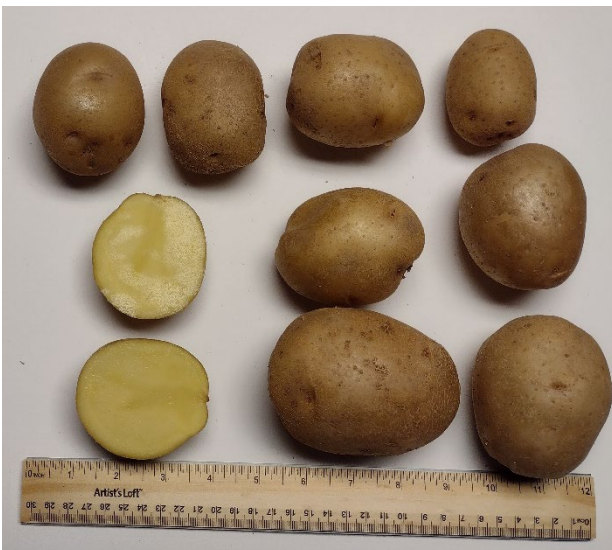
T61-4



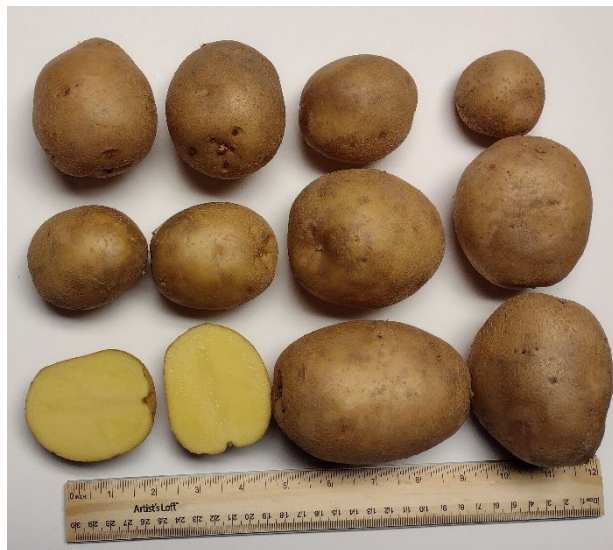
W1303-2Y



W15234-5Y



WI15240-2Y



WI15248-17Y



WAF14096-5

# Specialty Lines





# AF5412-3

- University of Maine
- Dark purple skin, starburst purple flesh
- Oblong shape similar to a russet, some points and lumps
- Some weird shapes present
- Sized up well, a lot of chef's and large A's
- Deep eyes



	Yield of Marketable Tubers by Size Distribution (cwt.)			% of Marketable Yield by Size Distribution		
	Chef's (> 3")	#1 "A's" (> 2 1/2")	"B's" (< 2")	Chef's (%)	#1 "A's" (%)	"B's" (%)
<b>Total Marketable Yield (Cwt)<sup>1</sup></b>	<b>102</b>	<b>86</b>	<b>6</b>	<b>53</b>	<b>45</b>	<b>3</b>



# AF5414-1

- University of Maine
- Dark red skin, rose red/purple flesh
- Consistently high yielding, some years highest yielding but generally excellent
- Mostly oblong shape, some flat some round
- Skin is fairly smooth
- Can be a little a little lumpy but not a major issue
- Good size range, Chef's are very large and A's are also nice
- One of the best tasting in 2018 and 2019
- Flesh stays a bright pink after cooking



Total Marketable Yield (Cwt) <sup>1</sup>	Yield of Marketable Tubers by Size Distribution (cwt.)			% of Marketable Yield by Size Distribution		
	Chef's (> 3")	#1 "A's" (> 2 1/2")	"B's" (< 2")	Chef's (%)	#1 "A's" (%)	"B's" (%)
<b>218</b>	<b>81</b>	<b>121</b>	<b>17</b>	<b>37</b>	<b>55</b>	<b>8</b>

# Baltic Rose

- Childstock Farm
- Red skin, dark yellow flesh
- Lighter red skin color
- Flat round to flat oblong shape
- A little texture to skin, has tiny white spots all over it
- Shallow eyes
- Second highest yielding in 2021, highest yielding in 2020 but disappointing in 2022
- Chef's showed some hollow heart, may be better to harvest as large A's
- Culls are mostly knobs and misshapes
- Tubers tend to sprout quickly
- Favorite tasting



Total Marketable Yield (Cwt) <sup>1</sup>	Yield of Marketable Tubers by Size Distribution (cwt.)			% of Marketable Yield by Size Distribution		
	Chef's (> 3")	#1 "A's" (> 2 1/2")	"B's" (< 2")	Chef's (%)	#1 "A's" (%)	"B's" (%)
<b>123</b>	<b>53</b>	<b>63</b>	<b>7</b>	<b>43</b>	<b>52</b>	<b>5</b>





Baltic Rose



AF5412-3



AF5414-1



# Russets



# AF3362-1

- Trade name is Caribou Russet
- University of Maine
- Oblong, round russet shape
- In 2018, had some issues with misshapes and internal issues but did well in 2019, 2020 and 2021.

Unfortunately, had issues again in 2022

- Lots of chefs, large A's and large B's, consistent and nice
- Some growth cracks and a few knolls and misshapes



Total Marketable Yield (Cwt) <sup>1</sup>	Yield of Marketable Tubers by Size Distribution (cwt.)			% of Marketable Yield by Size Distribution		
	Chef's (> 3")	#1 "A's" (> 2 1/2")	"B's" (< 2")	Chef's (%)	#1 "A's" (%)	"B's" (%)
<b>196</b>	<b>146</b>	<b>43</b>	<b>8</b>	<b>74</b>	<b>22</b>	<b>4</b>

# AF5707-1

- University of Maine
- Oblong, round russet shape
- Good shape and size
- Did have some scab with the scab on the smaller tubers
- Shallow eyes



	Yield of Marketable Tubers by Size Distribution (cwt.)			% of Marketable Yield by Size Distribution		
	Chef's (> 3")	#1 "A's" (> 2 1/2")	"B's" (< 2")	Chef's (%)	#1 "A's" (%)	"B's" (%)
<b>Total Marketable Yield (Cwt)<sup>1</sup></b>	<b>105</b>	<b>116</b>	<b>15</b>	<b>45</b>	<b>49</b>	<b>6</b>



# AF5762-8

- University of Maine
- Oblong, round russet shape
- Huge tubers
- Good size
- Hollow heart issues in the chef's
- Some knobs



	Yield of Marketable Tubers by Size Distribution (cwt.)			% of Marketable Yield by Size Distribution		
	Chef's (> 3")	#1 "A's" (> 2 1/2")	"B's" (< 2")	Chef's (%)	#1 "A's" (%)	"B's" (%)
<b>Total Marketable Yield (Cwt)<sup>1</sup></b>	<b>98</b>	<b>92</b>	<b>10</b>	<b>49</b>	<b>46</b>	<b>5</b>

# AF6340-6

- University of Maine
- Oblong, round russet shape
- Perfect shape and size, not too big, would be great for the retail market
- Shallow eyes
- Very uniform
- Large A's, small chef's



	Yield of Marketable Tubers by Size Distribution (cwt.)			% of Marketable Yield by Size Distribution		
	Chef's (> 3")	#1 "A's" (> 2 1/2")	"B's" (< 2")	Chef's (%)	#1 "A's" (%)	"B's" (%)
<b>Total Marketable Yield (Cwt)<sup>1</sup></b>	<b>109</b>	<b>152</b>	<b>13</b>	<b>40</b>	<b>55</b>	<b>5</b>





AF3362-1 (Caribou Russet)



AF5707-1



AF5762-8



AF6340-6



**Table 1: Summary of Varieties in Trial**

Variety	Source	Skin/Flesh	Total Marketable Yield (Cwt)
R213-2	Cornell University	White/Yellow	292
R15-4	Cornell University	White/White	281
AF6340-6	University of Maine	Russet	274
WAF14096-5	University of Wisconsin	White/Yellow	269
AF11611-2	University of Maine	White-Pink Splotch/Yellow	252
NDAF12238Y-2	University of Maine	Red/White	251
MSBB343-2Y	University of Michigan	White/Yellow	236
AF5707-1	University of Maine	Russet	235
NDAF1489-4	University of Maine	White-Purple Splotch/Yellow	226
NDAF113484B-1	University of Maine	Red/White	220
AF5414-1	University of Maine	Red/Pink	218
AF6194-4	University of Maine	White/White	202
AF5762-8	University of Maine	Russet	201
AF6289-2	University of Maine	Red/White	199
WI3103-2Y	University of Wisconsin	White/Yellow	197
Caribou Russet	University of Maine	Russet	196
T61-4	Cornell University	White/Yellow	194
AF5412-3	University of Maine	Purple/Purple	193
WI5248-17Y	University of Wisconsin	White/Yellow	189
NY118	Cornell University	Red/White	188
WI5234-5Y	University of Wisconsin	White/Yellow	167
MSCC553-1R	University of Michigan	Red/White	164
AF5819-2	University of Maine	White/White	164
T59-1	Cornell University	Red/White	156
NY171	Cornell University	White-Purple Splotch/White	154
MSBB371-1YS	University of Michigan	White-Purple Splotch/White	152
MCAA182-2R	University of Michigan	Red/White	148
Natascha	Childstock Farm	White/Yellow	139
Baltic Rose	Childstock Farm	Red/Yellow	123
WI5240-2Y	University of Wisconsin	White/Yellow	105

Planting Date: 4/29/22 Harvest Date: 10/11/22

Trial specifics: Row spacing = 30 inches In-row spacing = 12 inches Plot length = 80 feet

**Table 2: Yield and Distribution of Yield by Size (Highest to Lowest Yield)**

Variety	Skin/Flesh	Total Marketable Yield (Cwt)	Yield of Marketable Tubers by			Yield of Marketable Tubers by			% of Marketable Yield by Size		
			Chef's (> 3")	#1 "A's" (> 2 1/2")	"B's" (< 2")	Chef's (> 3")	#1 "A's" (> 2 1/2")	"B's" (< 2")	Chef's (%)	#1 "A's" (%)	"B's" (%)
R213-2	White/Yellow	292	47	223	23	93	446	45	16	76	8
R15-4	White/White	281	108	165	8	216	330	16	38	59	3
AF6340-6	Russet	274	109	152	13	219	303	26	40	55	5
WAF14096-5	White/Yellow	269	51	216	2	101	432	4	19	80	1
AF11611-2	White-Pink Splotch/Yellow	252	38	187	26	77	375	52	15	74	10
NDAF12238Y-2	Red/White	251	58	174	18	116	349	37	23	70	7
MSBB343-2Y	White/Yellow	236	119	109	8	238	218	15	51	46	3
AF5707-1	Russet	235	105	116	15	209	231	30	45	49	6
NDAF1489-4	White-Purple Splotch/Yellow	226	30	177	19	61	354	37	13	78	8
NDAF113484B-1	Red/White	220	64	147	9	127	294	18	29	67	4
AF5414-1	Red/Pink	218	81	121	17	161	241	34	37	55	8
AF6194-4	White/White	202	77	121	4	153	243	8	38	60	2
AF5762-8	Russet	201	98	92	10	196	184	21	49	46	5
AF6289-2	Red/White	199	68	125	7	135	250	13	34	63	3
WI3103-2Y	White/Yellow	197	42	136	18	84	272	37	21	69	9
Caribou Russet	Russet	196	146	43	8	291	87	15	74	22	4
T61-4	White/Yellow	194	0	106	87	0	213	174	0	55	45
AF5412-3	Purple/Purple	193	102	86	6	204	172	11	53	45	3
WI5248-17Y	White/Yellow	189	12	165	12	24	329	25	6	87	7
NY118	Red/White	188	115	71	3	230	141	6	61	37	2
WI5234-5Y	White/Yellow	167	10	125	32	20	250	63	6	75	19

See next page for the rest of the varieties

Planting Date: 4/29/22 Harvest Date: 10/11/22

Trial specifics: Row spacing = 30 inches In-row spacing = 12 inches Plot length = 80 feet

**Table 2: Yield and Distribution of Yield by Size (Highest to Lowest Yield)**

Variety	Skin/Flesh	Total Marketable Yield (Cwt)	Yield of Marketable Tubers by			Yield of Marketable Tubers by			% of Marketable Yield by Size		
			Chef's (> 3")	#1 "A's" (> 2 1/2")	"B's" (< 2")	Chef's (> 3")	#1 "A's" (> 2 1/2")	"B's" (< 2")	Chef's (%)	#1 "A's" (%)	"B's" (%)
MSCC553-1R	Red/White	164	38	116	11	75	232	22	23	71	7
AF5819-2	White/White	164	52	108	4	104	215	9	32	66	3
T59-1	Red/White	156	24	120	12	48	240	25	15	77	8
NY171	White-Purple Splotch/White	154	77	67	9	154	135	19	50	44	6
MSBB371-1YS	White-Purple Splotch/White	152	21	122	9	42	244	18	14	80	6
MSAA182-2R	Red/White	148	4	113	31	8	225	62	3	76	21
Natascha	White/Yellow	139	38	89	12	76	178	24	27	64	9
Baltic Rose	Red/Yellow	123	53	63	7	105	127	13	43	52	5
WI5240-2Y	White/Yellow	105	12	82	11	24	164	22	11	78	11

Planting Date: 4/29/22 Harvest Date: 10/11/22

Trial specifics: Row spacing = 30 inches In-row spacing = 12 inches Plot length = 80 feet



**Table 3: Yield and Distribution of Yield Sorted by Type of Potato**

Variety	Skin/Flesh	Total Marketable Yield (Cwt)	Yield of Marketable Tubers by Size Distribution (Cwt)			Yield of Marketable Tubers by Size Distribution (50 lb bags)			% of Marketable Yield by Size Distribution		
			Chef's (> 3")	#1 "A's" (> 2 1/2")	"B's" (< 2")	Chef's (> 3")	#1 "A's" (> 2 1/2")	"B's" (< 2")	Chef's (%)	#1 "A's" (%)	"B's" (%)
<b>Specialty</b>											
AF5414-1	Red/Pink	218	81	121	17	161	241	34	37	55	8
AF5412-3	Purple/Purple	193	102	86	6	204	172	11	53	45	3
Baltic Rose	Red/Yellow	123	53	63	7	105	127	13	43	52	5
<b>Red Skin, White Flesh</b>											
NDAF12238Y-2	Red/White	251	58	174	18	116	349	37	23	70	7
NDAF113484B-1	Red/White	220	64	147	9	127	294	18	29	67	4
AF6289-2	Red/White	199	68	125	7	135	250	13	34	63	3
NY118	Red/White	188	115	71	3	230	141	6	61	37	2
MSCC553-1R	Red/White	164	38	116	11	75	232	22	23	71	7
T59-1	Red/White	156	24	120	12	48	240	25	15	77	8
M5AA182-2R	Red/White	148	4	113	31	8	225	62	3	76	21
<b>Russet</b>											
AF6340-6	Russet	274	109	152	13	219	303	26	40	55	5
AF5707-1	Russet	235	105	116	15	209	231	30	45	49	6
AF5762-8	Russet	201	98	92	10	196	184	21	49	46	5
Caribou Russet	Russet	196	146	43	8	291	87	15	74	22	4

See next page for the rest of varieties

Planting Date: 4/29/22 Harvest Date: 10/11/22

Trial specifics: Row spacing = 30 inches In-row spacing = 12 inches Plot length = 80 feet

**Table 3: Yield and Distribution of Yield Sorted by Type of Potato**

Variety	Skin/Flesh	Total Marketable Yield (Cwt)	Yield of Marketable Tubers by			Yield of Marketable Tubers by			% of Marketable Yield by Size		
			Chef's (> 3")	#1 "A's" (> 2 1/2")	"B's" (< 2")	Chef's (> 3")	#1 "A's" (> 2 1/2")	"B's" (< 2")	Chef's (%)	#1 "A's" (%)	"B's" (%)
<b>White Skin, White Flesh</b>											
R15-4	White/White	281	108	165	8	216	330	16	38	59	3
AF6194-4	White/White	202	77	121	4	153	243	8	38	60	2
AF5819-2	White/White	164	52	108	4	104	215	9	32	66	3
NY171	White-Purple Splotch/White	154	77	67	9	154	135	19	50	44	6
<b>White Skin, Yellow Flesh</b>											
R213-2	White/Yellow	292	47	223	23	93	446	45	16	76	8
WAF14096-5	White/Yellow	269	51	216	2	101	432	4	19	80	1
AF11611-2	White-Pink Splotch/Yellow	252	38	187	26	77	375	52	15	74	10
MSBB343-2Y	White/Yellow	236	119	109	8	238	218	15	51	46	3
NDAF1489-4	White-Purple Splotch/Yellow	226	30	177	19	61	354	37	13	78	8
WI3103-2Y	White/Yellow	197	42	136	18	84	272	37	21	69	9
T61-4	White/Yellow	194	0	106	87	0	213	174	0	55	45
WI5248-17Y	White/Yellow	189	12	165	12	24	329	25	6	87	7
WI5234-5Y	White/Yellow	167	10	125	32	20	250	63	6	75	19
MSBB371-1YS	White-Purple Splotch/Yellow	152	21	122	9	42	244	18	14	80	6
Natascha	White/Yellow	139	38	89	12	76	178	24	27	64	9
WI5240-2Y	White/Yellow	105	12	82	11	24	164	22	11	78	11

Planting Date: 4/29/22 Harvest Date: 10/11/22

Trial specifics: Row spacing = 30 inches In-row spacing = 12 inches Plot length = 80 feet

**Table 4: Cull Information and Distribution (Highest to Lowest Cull Weight)**

Variety	Total Marketable Yield (Cwt)	Cull Total (cwt)*	Cull Distribution				Cull % of Total Yield
			Green (cwt)	Scab (cwt)	Cracks (cwt)	Mishapes /knobs (cwt)	
AF5707-1	235	49	0	49	0	0	17%
AF5412-3	193	16	15	0	0	1	8%
MSBB343-2Y	236	14	6	0	8	0	6%
Baltic Rose	123	14	1	0	0	13	10%
Caribou Russet	196	14	7	0	0	4	7%
WI3103-2Y	197	13	11	0	0	0	6%
WI5234-5Y	167	12	9	0	0	3	7%
NDAF113484B-1	220	10	8	0	2	0	4%
AF11611-2	252	9	8	0	0	1	3%
NY171	154	9	9	0	0	0	5%
AF5414-1	218	7	3	0	0	4	3%
NDAF1489-4	226	7	6	0	0	1	3%
MSCC553-1R	164	7	0	0	0	7	4%
Natascha	139	6	5	0	0	1	4%
WI5240-2Y	105	5	5	0	0	0	5%
AF6340-6	274	4	4	0	0	0	1%
MSBB371-1YS	152	4	4	0	0	0	3%
R213-2	292	3	3	0	0	0	1%
AF6194-4	202	3	3	0	1	0	2%
NDAF12238Y-2	251	3	2	0	1	1	1%
AF6289-2	199	3	2	0	0	1	2%
R15-4	281	3	1	0	2	0	1%
MSAA182-2R	148	3	2	0	0	1	2%
AF5762-8	201	3	2	0	0	1	1%
T61-4	194	2	2	0	0	1	1%
AF5819-2	164	2	2	0	0	0	1%
WI5248-17Y	189	0	0	0	0	0	0%
T59-1	156	0	0	0	0	0	0%
WAF14096-5	269	0	0	0	0	0	0%
NY118	188	0	0	0	0	0	0%

\*Some varieties had additional culls due to PVY, rhizoctonia or other factors that are included in the total culls but not in the listed columns

Planting Date: 4/29/22 Harvest Date: 10/11/22

Trial specifics: Row spacing = 30 inches In-row spacing = 12 inches Plot length = 80 feet



**Table 5: Comments**

Variety	Comments
AF11611-2	Purple spotted skin. Oblong to round shape, a few misshape culls. Shallow eyes, medium dark yellow flesh.
AF5412-3	Dark purple skin, muted. Big size, oblong round shape. Medium deep eyes with some raised. A few misshapes. Purple starburst flesh.
AF5414-1	Medium dark skin. Pink flesh. Round to oblong shape. A few misshapes.
AF5707-1	Russet. Good shape and size. Scab problem. Most of the scab is on the younger tubers. Eyes are very shallow.
AF5762-8	Russet. Some knobs. Typical russet shape. Huge tubers. Typical russet skin. Good size. Hollow heart issues in the chef's. Bright white flesh.
AF5819-2	Round slightly oblong shape. Bright white skin. Shallow eyes. Good size, lots of large A's. Had a bunch of rodent damage
AF6194-4	White skin. Round to slightly oblong shape. Good size, a lot of large A's. Few shallow eyes.
AF6289-2	Medium dark red skin. Oblong to round shape. Shallow eyes. Uniform in shape and size. A lot of large A's, not a ton of chef's.
AF6340-6	Russet. Perfect russet shape. Good size, not too big, not too small. Shallow eyes. A's are larger, chef's are smaller and good for general market. Very uniform
Baltic Rose	Medium dark red skin. Round to oblong shaped. Good size. Some knobs and misshapes. Dark yellow flesh. Some sprouting. Little bit of skin texture. Biggest chef's may have hollow heart but most are solid.
Caribou Russet	Nice russet shape. Russeted skin. Good size. Corky browning going on in the larger tubers this year. Lots of chef's.
MSAA182-2R	Not huge. Beautiful dark red skin. Really nice round round shape. Shallow eyes. Not a lot of culls. Size is decent. Bright white flesh
MSBB343-2Y	Pretty very round, white skin. Yellow flesh. Good size. A lot of growth cracks. Little bit of skin texture. Pale yellow flesh.
MSBB371-1YS	White skin with purple blush around the eye. Round to flat round with some oblongs. Shallow eyes. Good size, a lot of good size A's not a lot of chefs. Creamy yellow flesh.
MSCC553-1R	Dark red skin. Round round shape. A few misshapes. Had some rodent damage. Good size. Big chef's and A's. Odd round eyes. Bright white flesh.
Natascha	Yellow skin. Oblong shape. Smaller size, lots of medium A's. Few chef's. Culls mostly greeners. Slightly raised eye.
NDAF113484B-1	Medium red skin. Round round shape. A lot of large A's. Generally consistent good yielding. Shallow eyes. Bright white flesh.
NDAF12238Y-2	Pretty medium dark red skin. Good size. Oblong to round shape. Medium eyes. Fairly uniform.

**Table 5: Comments**

Variety	Comments
NDAF1489-4	White skin with purple blush around the eye. Size is impressive. Some knobs. Round to flat round with some oblongs. Medium dark yellow flesh. Smooth skin. Lots of shallow eyes to raised eyes. A small amount of rhizoctonia issues on the stem end.
NY118	Light red skin. Round round shape. Large size. Consistent producer even if the plants don't look good. Medium eyes. White flesh.
NY171	White skin with purple splotch. Nice size. Oblong shape. Shallow eyes. Skin is smooth. Greeners can be hard to pick out because of the purple blotch. White skin
R15-4	Bright white skin. Shallow eyes. Flat round to slightly oblong shape. Great yield. Good size, lots of chef's and large A's.
R213-2	Very pretty. Few chef's, lots of large A's. Oblong shape. Buff colored skin. Shallow eyes. Slight pink eye. A few knobs. A little bit of sprouting in storage. Uniform in size and shape. Buff white/light yellow flesh. Overall, really nice
T59-1	Light red skin. Good size. Oblong shape. Skin slightly textured. Medium eyes. Good amount of chef's and large A's. Bright white flesh.
T61-4	Fingerling, very oblong and thin. Decent size. Catching on the grader. Looks nice. Buff white/yellow flesh similar to Yukon and firm. Very shallow eyes
W13103-2Y	White skin. Good size. Starting to sprout already in storage. Smooth skin. Yellow flesh.
W15234-5Y	Round shape to slightly oblong. Nice yellow skin. Fair amount of chef's. Buff skin. Culls are greeners. Shallow eyes. All potatoes had internal browning issues. Threw it out. Nice medium yellow flesh.
W15240-2Y	Shallow eyes, few. Mostly oblong. Nice A's. Stem end discoloration probably rhizoctonia. Most culls were green. Internal browning issues. Medium yellow flesh.
WAF14096-5	Round round shape. Good size, lots of decent size A's. Pink eye, white skin. Skin has a little texture to it. Most tubers sprouting in storage. Shallow eye. Yellow flesh.
W15248-17Y	Round round shape. Skin has some texture. Mostly A's, very few chefs. Yellow flesh.

Thank you to our farm collaborator Samascott Orchards

And thank you to our seed suppliers:

Ralph Child, Childstock Farms, Inc.

Dr. Greg Porter, University of Maine Potato Breeding Program

Dr. Walter De Jong, Cornell University Potato Breeding Program

Dr. David Douches, Michigan State University Potato Breeding Program

Dr. Jeffrey Endelman, University of Wisconsin-Madison Plant Breeding and Plant Genetics

**The Eastern New York Commercial Horticulture Program is a Cornell Cooperative Extension Partnership between Cornell University and the CCE Associations in the 17 Eastern New York counties.**

