

STRAWBERRY TROUBLESHOOTING: DISEASE ID IN NURSERY STOCK AND FIELDS

Prepared by Anya Osatuke for the Western NY Fruit Conference

February 28, 2023

A REQUEST: STRAWBERRY BOTRYTIS SURVEY

Partnering with University of Maryland to
ID pesticide-resistant gray mold

Please contact me if you see gray mold in
your strawberries.

I will collect 20-40 leaves— you will get
personalized spray recommendations.







NURSERY STOCK

- Sourcing matters!
- Large nurseries make contracts with smaller growers.
- Field conditions vary.
- Documentation now can help you make the best management decisions.

NURSERY STOCK

Look for these terms when choosing what and where to buy.
They do not guarantee YOUR plants will be free of **insect, fungal,**
or **bacterial pests.**

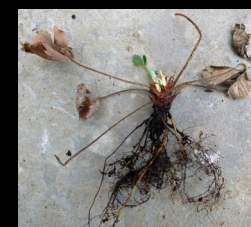


Virus-
indexed?

Certified?

Resistant to
X disease?

HOW TO CHECK YOUR PLANTS



HOW TO CHECK YOUR PLANTS

- Sharp knife
- Cutting board
- Camera
- Notepad
- Hand lens

HOW TO CHECK YOUR PLANTS



BARE-ROOT BUNDLES

- Crown rots
- Mites

ANTHRACNOSE



MANAGING ANTHRACNOSE

- Tilt
- Pristine
- Switch
- Consider low tunnels
- Flood and tarp field after removing plants.

CYCLAMEN MITES



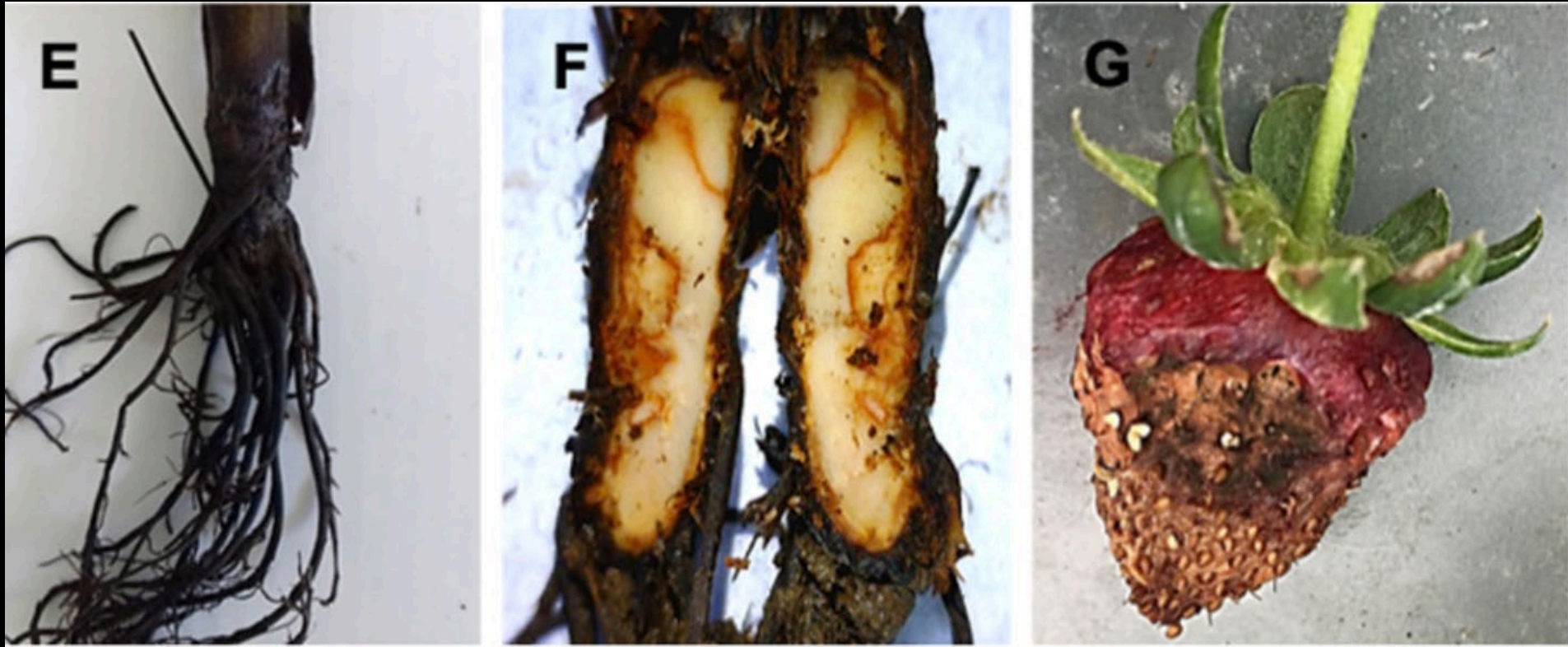
CYCLAMEN MITE TREATMENTS

- Hot water drip pre-plant: 110°F for 15 minutes.
- Agri-Mek*
- Danitol*
- Portal

PLUG PLANTS

- Crown rots (same as bare root, plus pestalotia)
- Cyclamen mites
- Bacterial leaf spot

NEOPESTALOTIOPSIS AKA PESTALOTIA



CYCLAMEN MITES



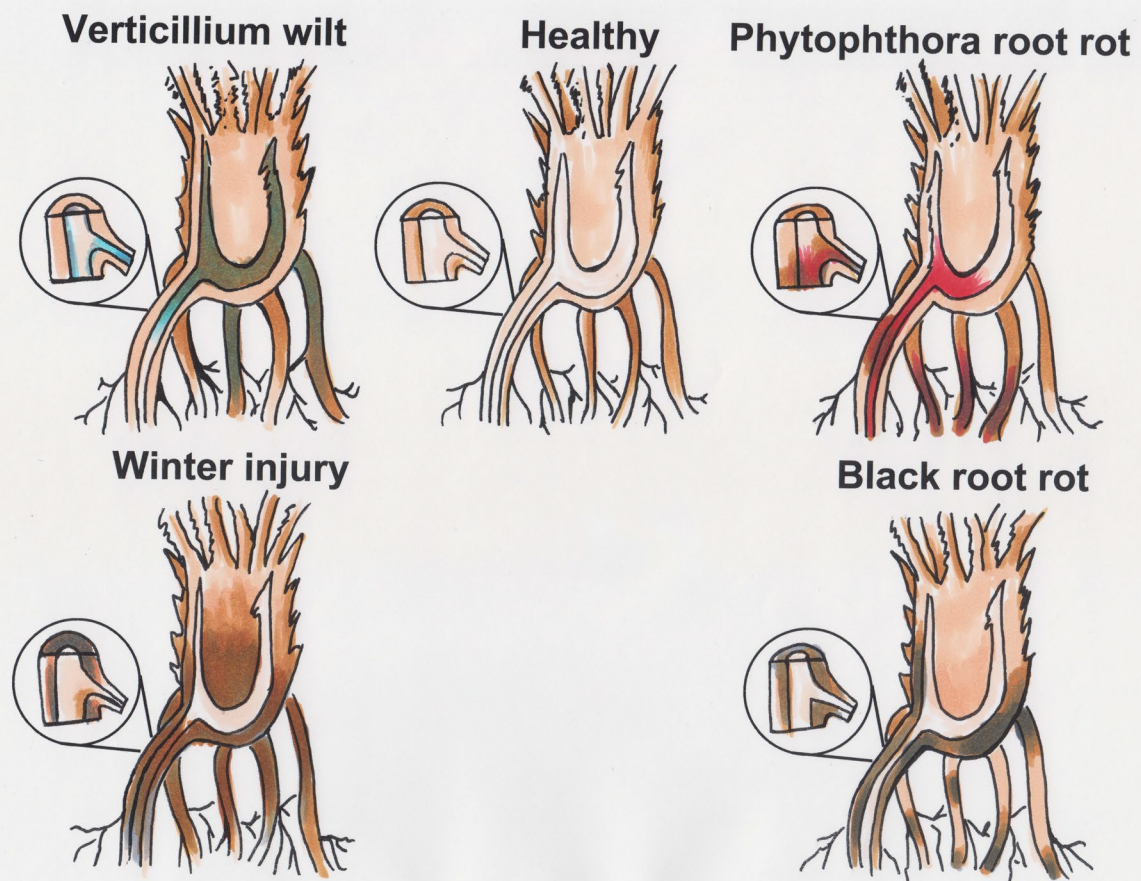
BACTERIAL LEAF SPOT



TREATING BACTERIAL LEAF SPOT

- Double Nickel
- Actigard
- Badge
- Lesions will affect quality of fruit.

FIELD SCOUTING



WINTER INJURY



MULCHING

- Straw a better insulator than 2 layers of floating row cover
- 1 layer of floating row cover = earlier blooms
- Plants weakened if heavy mulch removed too late



RED STELE / PHYTOPHTHORA ROOT ROT



MANAGING RED STELE / PHYTOPHTHORA ROOT ROT

- Plant resistant varieties on heavy clay soils
- Use Rampart, Phostrol, or Ridomil Gold as preventative treatments
- Rogue infected plants

BLACK ROOT ROT



SPIDER MITES



MANAGING SPIDER MITES

- Clean area around field now– remove pots, farming equipment, etc.
- Kanemite
- Portal
- *Danitol and many more.....
- Bi-weekly, preventative releases of predatory mites *persimilis* and *californicus*
- Release predatory mites at rates of 1,000 – 2,000 mites per acre, 2x/month after last frost.

THANK YOU!

- Email: aco56@cornell.edu
- Mobile: 607-752-2793