



Taming the Beast: Managing Problem Weeds in NY

Janet van Zoeren and Mike Basedow

Outline:

- Grass Systemic Materials
- Stinger to manage thistle
- Tree to tree Unison/Stinger
- Trunk Guard Follow up



Quackgrass Trial

Comparing two Group 1 Herbicides
(Poast and Select Max)

Applied 3 times at field sites in
Eastern and Western NY

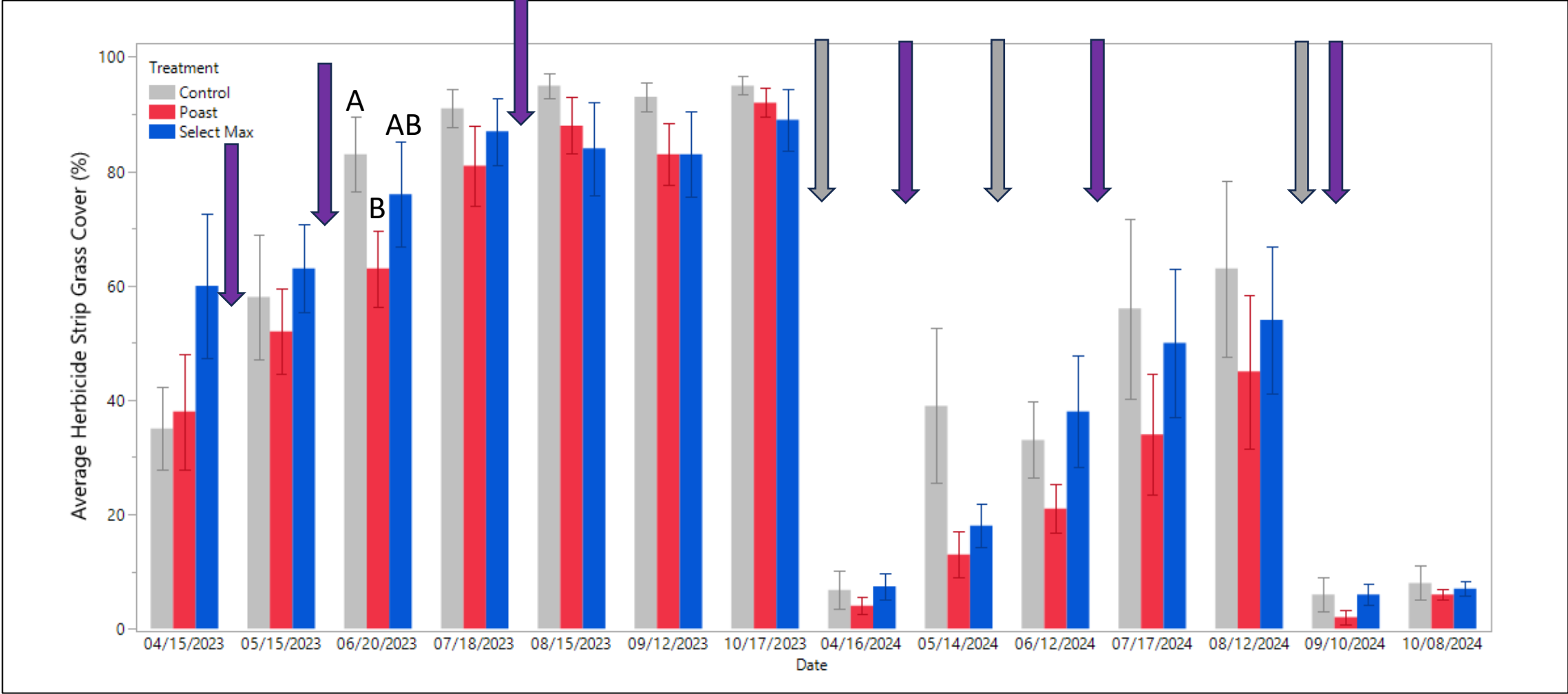
(Same sites, similar schedule in
2023)

Applied in addition to the growers'
regular herbicide programs

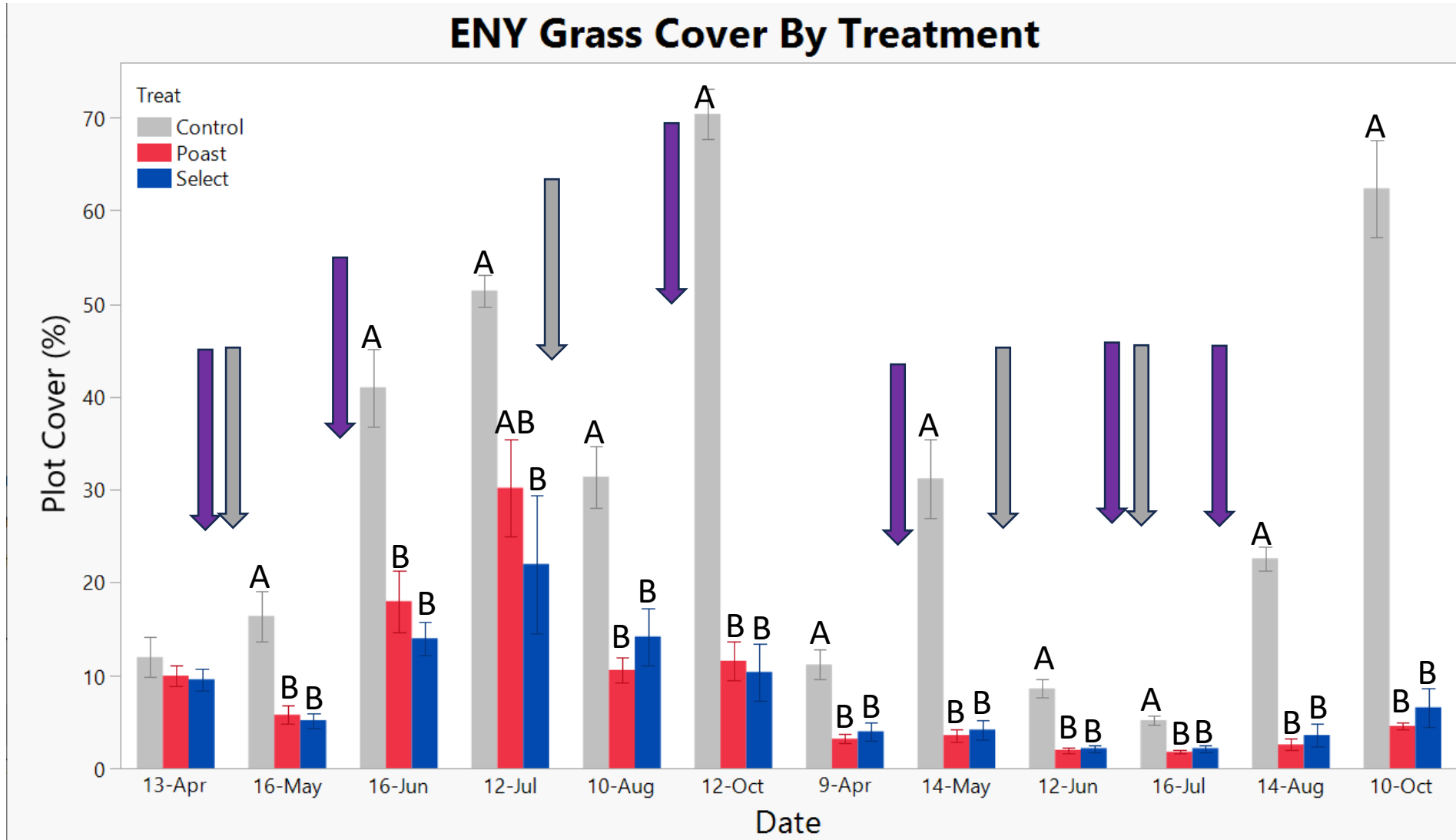


Average Herbicide Strip Grass Cover (%)

Western NY

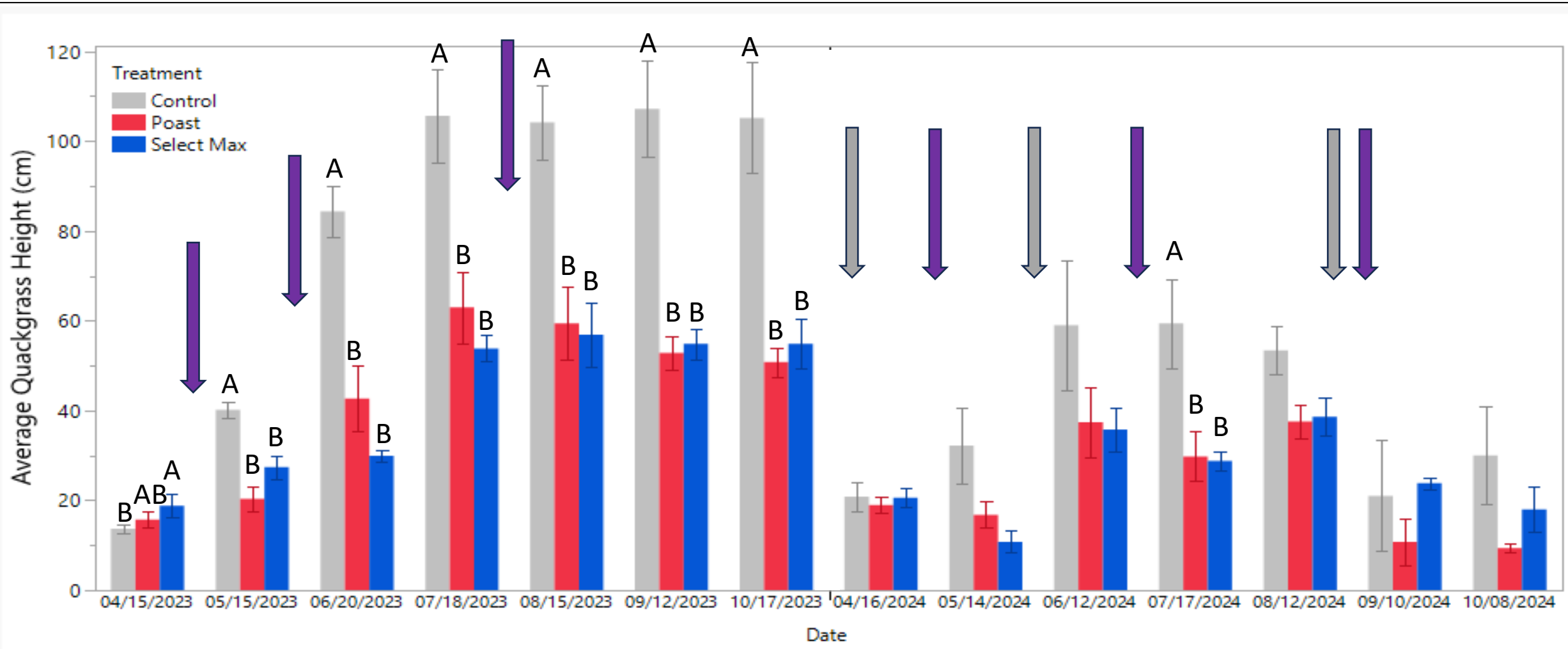


Average Herbicide Strip Grass Cover (%)



Average Quackgrass Height (cm)

Western NY



Takeaways?

Both materials performed similarly over most of the two-year period:

- reduced grass height (2023 in WNY)
- prevented seeding
- reduced overall grass cover in ENY, slightly less so in WNY

Need to start early before grass gets too high

Include them within an annual herbicide rotation; consider using in grassy sites in rotation with a glyphosate / paraquat / glufosinate.

\$30 per acre to apply Poast, \$22 to apply Select Max

Stinger to manage Canada Thistle

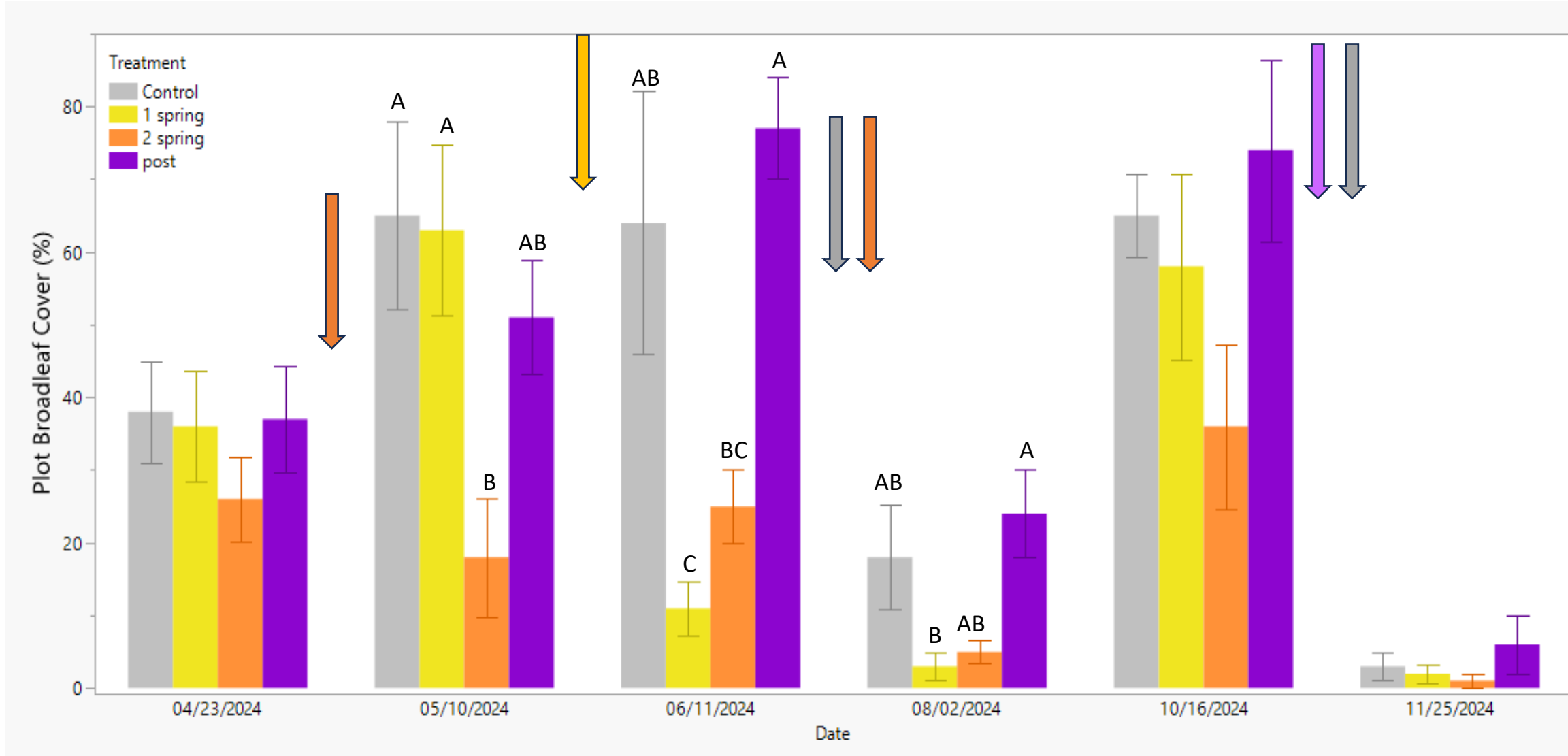
Comparing three timings of
Stinger

- 2 applications at 1/3 pt rate
at early rosette (**about TC**)
and 70 days later
- 1 application at 2/3 pt rate
between rosette and bud
stage (**right after petal fall**)
- 1 application at 2/3 pt rate
post harvest

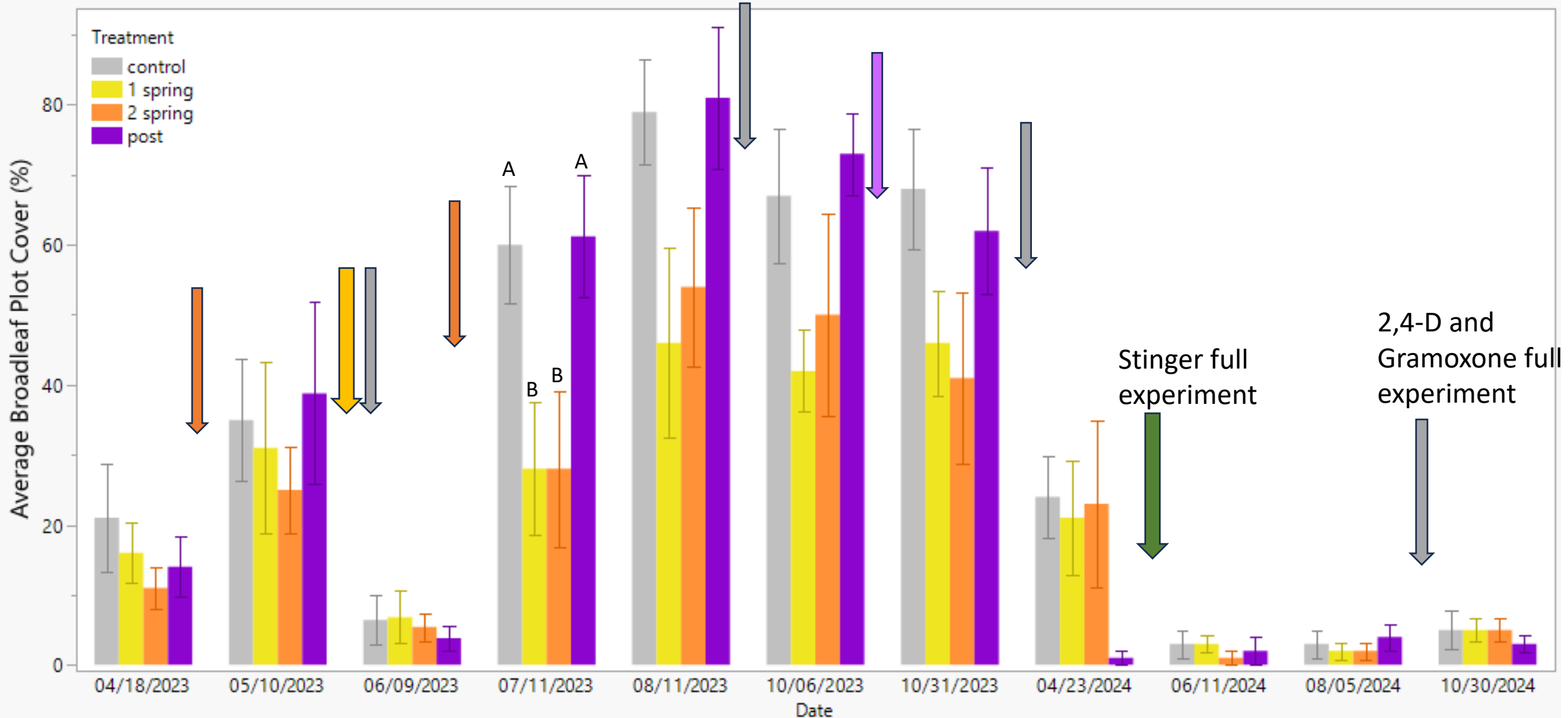


Average Plot Broadleaf Cover (%)

Western NY



Last Year's WNY Site, 2023 and 2024



Last Year's Site, August 2023-2024



August 2023



October 2024

Takeaways

- 1 spring application was as effective as 2 separate
 - save the labor and do one application at PF-1C.
 - (\$21 dollars per application of full rate, \$26 for two applications)
- If you miss a PF application, you likely have a second chance to get on track with a post-harvest application
 - The double tap approach (fall + following petal fall) looks good
 - The label only allows for 1 full rate application per growing season, so can't do that every year



The background of the slide is a photograph of an orchard. In the foreground, there is a dense field of tall, green grass. Behind the grass, several apple trees are visible, their branches and leaves filled with green apples. The trees are arranged in rows, and the overall scene is lush and green.

Thank you!

NY Apple Research and Development Program

Liz Tee, Jenn Stanton, and Dr. Lynn Sosnoskie

Our cooperating growers!

Contact Info:

Email: jev67@cornell.edu

Phone: 585 797 8368

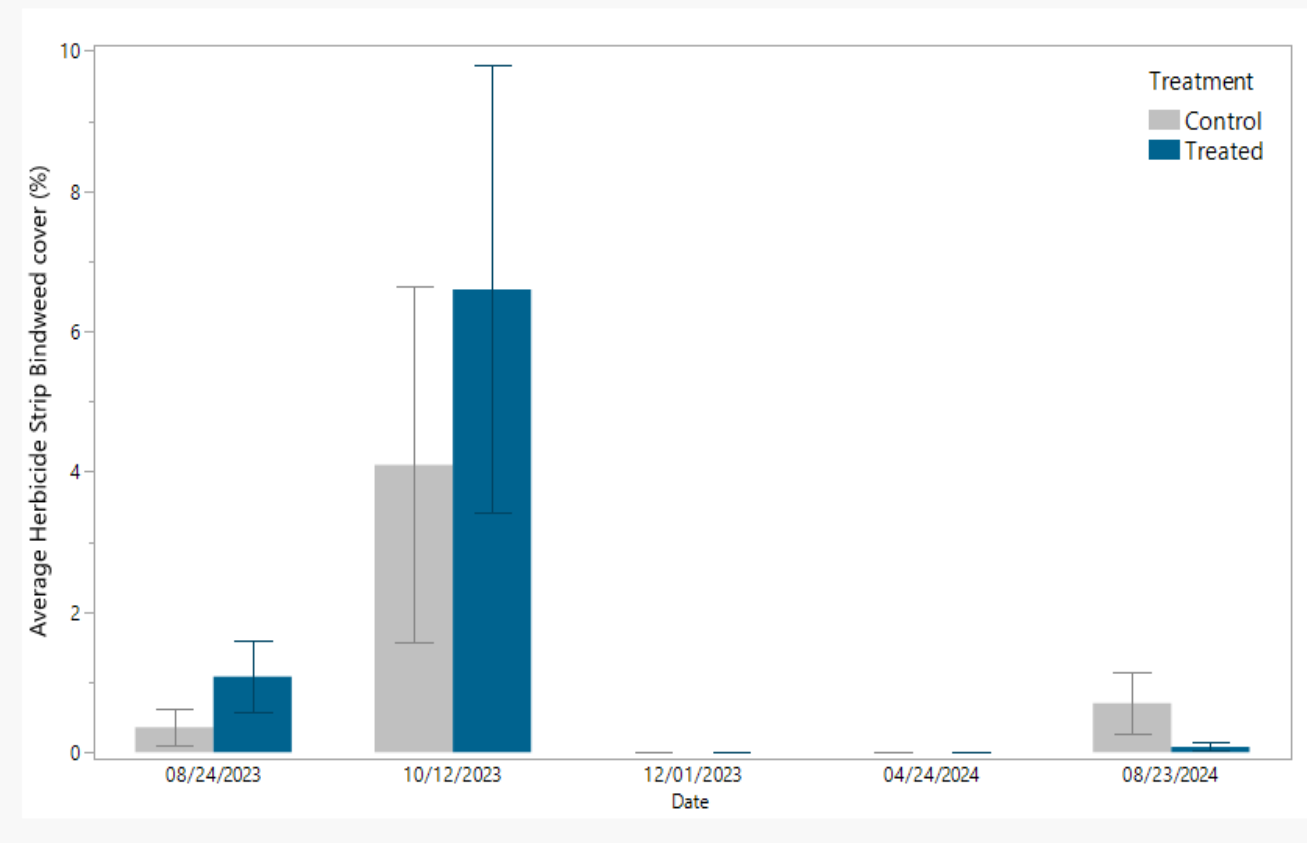
Bindweed Trial

Tree-to-tree Unison (4 qts/A) and
Stinger (2/3 pts/A) post-harvest vs.
the growers' standard



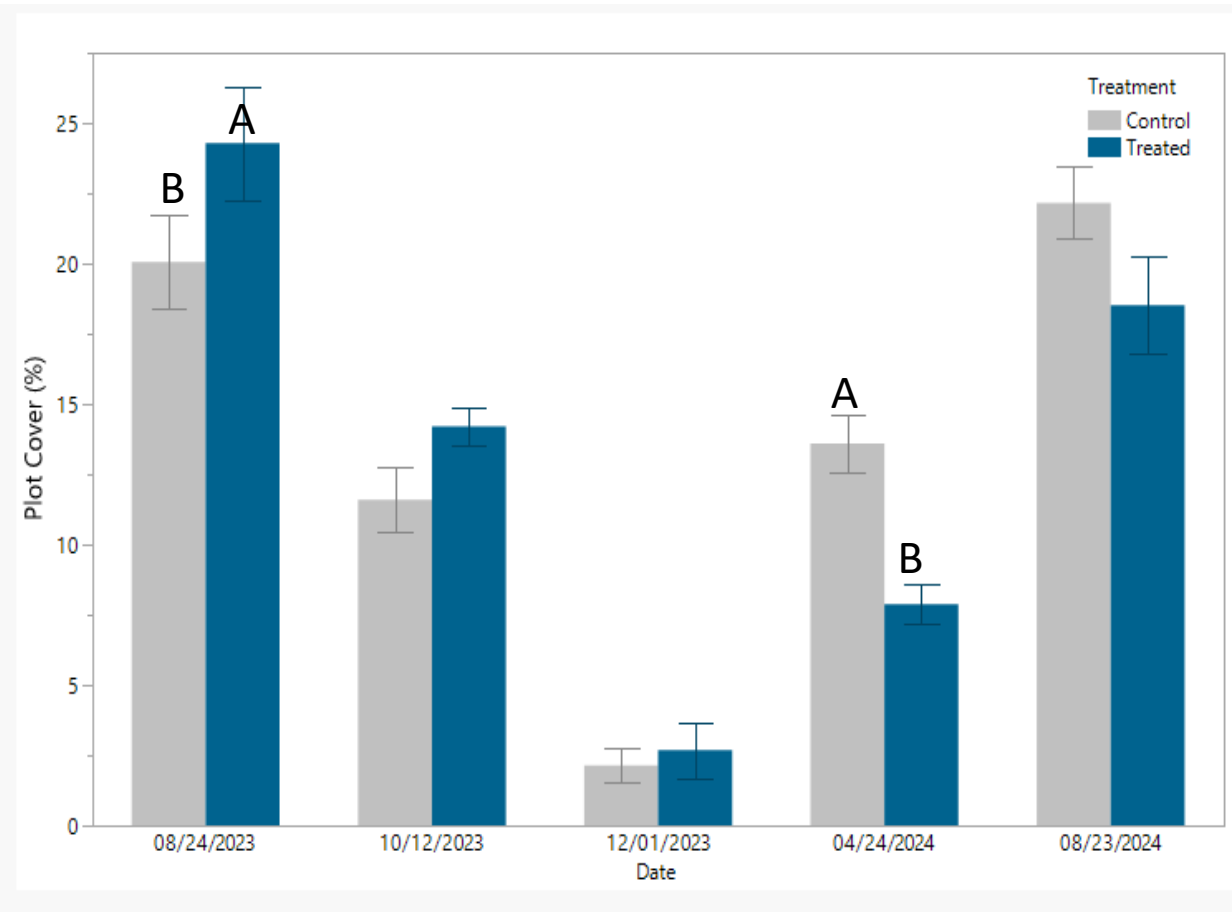
Bindweed Cover in Row Middles (%)

Western NY



Broadleaf Plot Cover (%)

Western NY



Weeds that Unison + Stinger *did* control

Eastern NY

- Clover
- Vetch
- Dandelion
- Plantain

Western NY

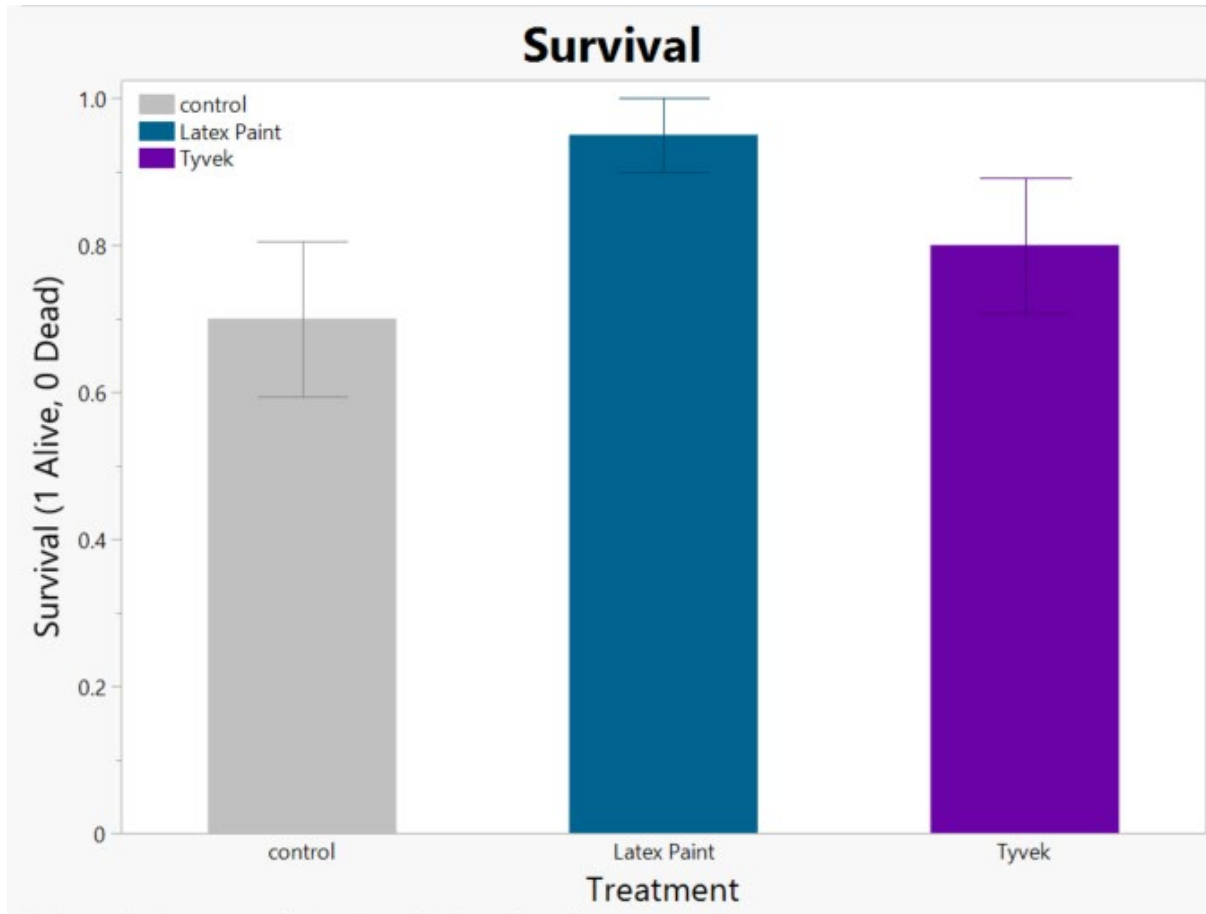
- Clover
- Oxalis
- Chickweeds (common and mouse ear)
- Yarrow

Trunk Guard vs Latex Paint Study



Tree Survival

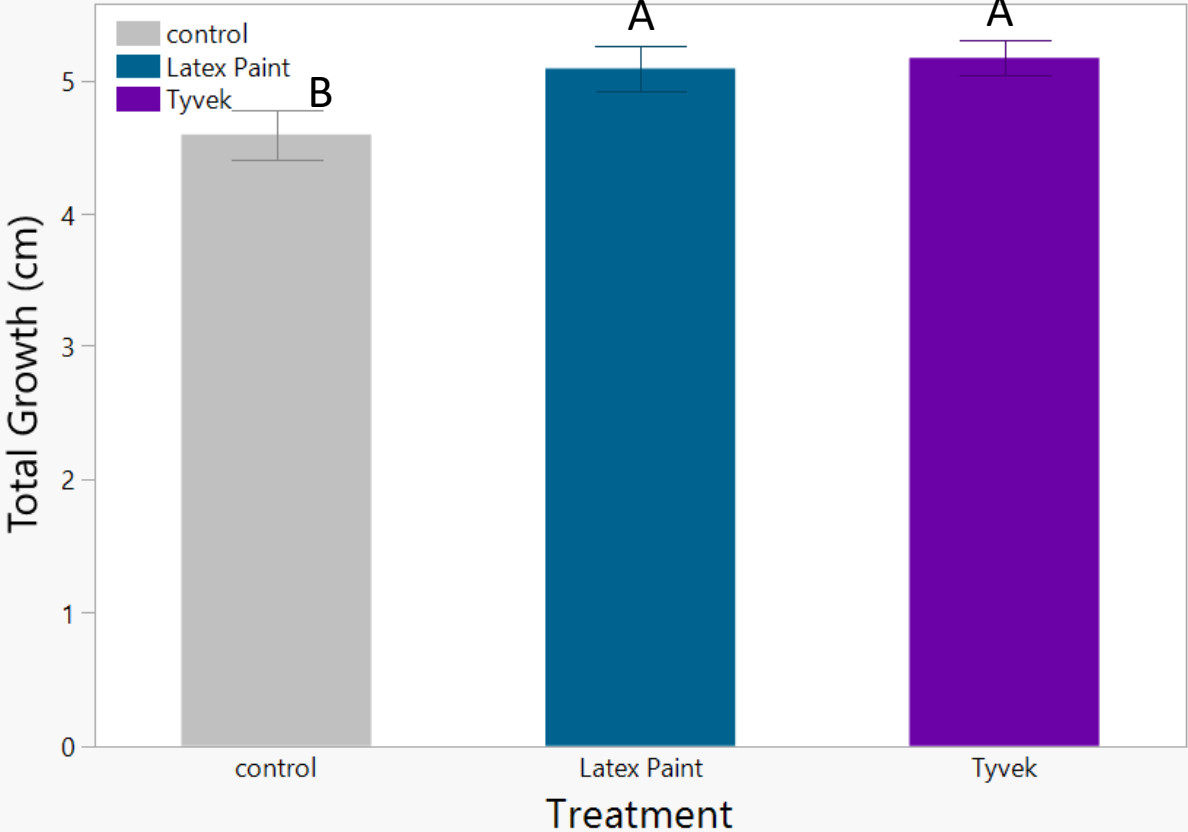
Eastern NY



Total Cumulative Trunk Growth (cm)

Eastern NY

2022-2024 Growth (cm)



Current Thoughts?

- Paint might have helped protect trees from winter damage associated with a cold snap that occurred in early Feb 2023
- Need to continue monitoring long term to see if herbicide is playing a role