



Cornell University
Cooperative Extension

Lake Ontario Fruit Program
in Wayne, Orleans, Niagara, Monroe, and Oswego Counties

Differences between European Corn Borer and Codling Moth

Photos by
Elizabeth Tee
CCE-LOF
Program Aide



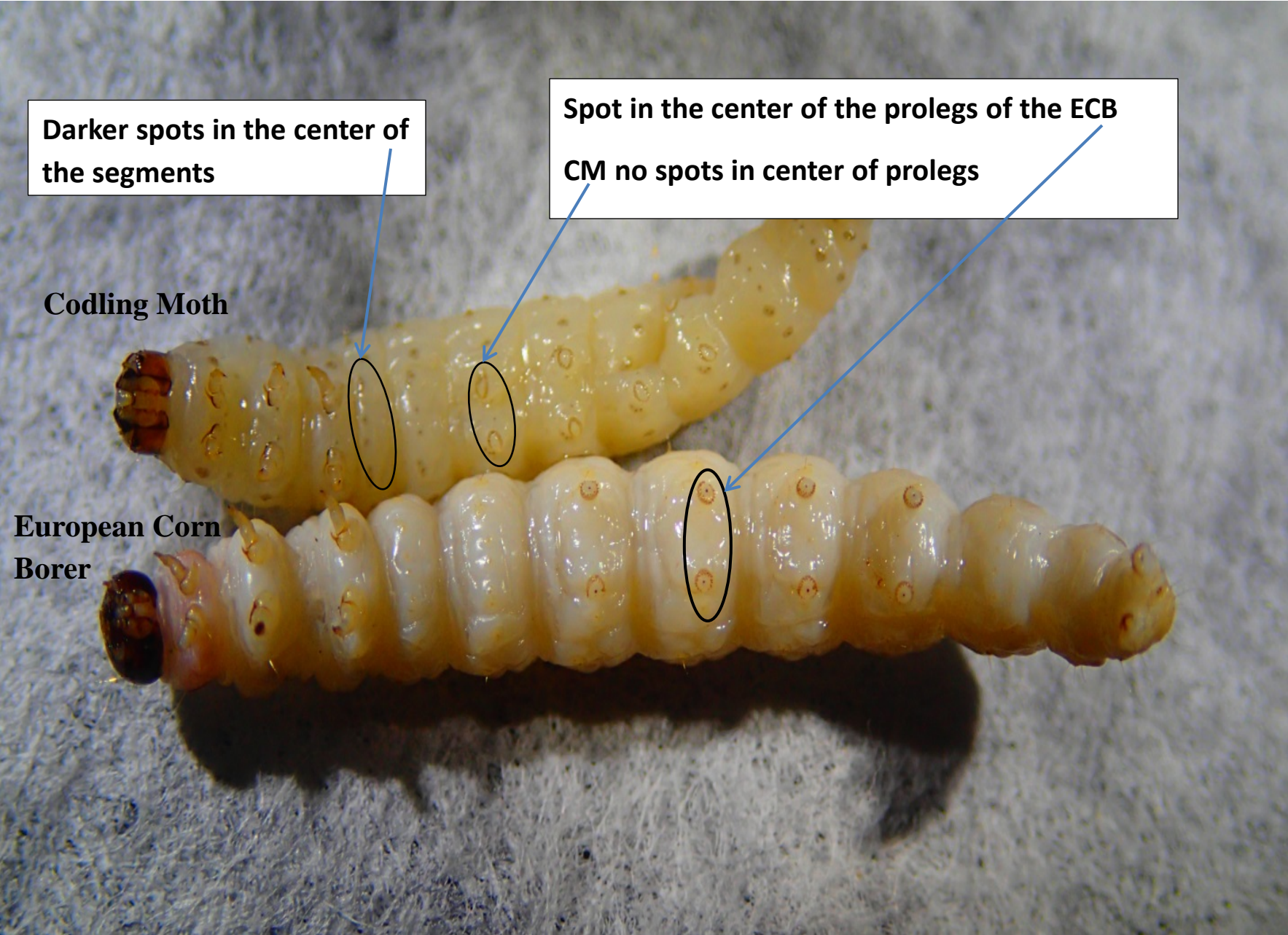
Your Trusted Source for Research-Based Fruit Production Knowledge.

Darker spots in the center of the segments

Spot in the center of the prolegs of the ECB
CM no spots in center of prolegs

Codling Moth

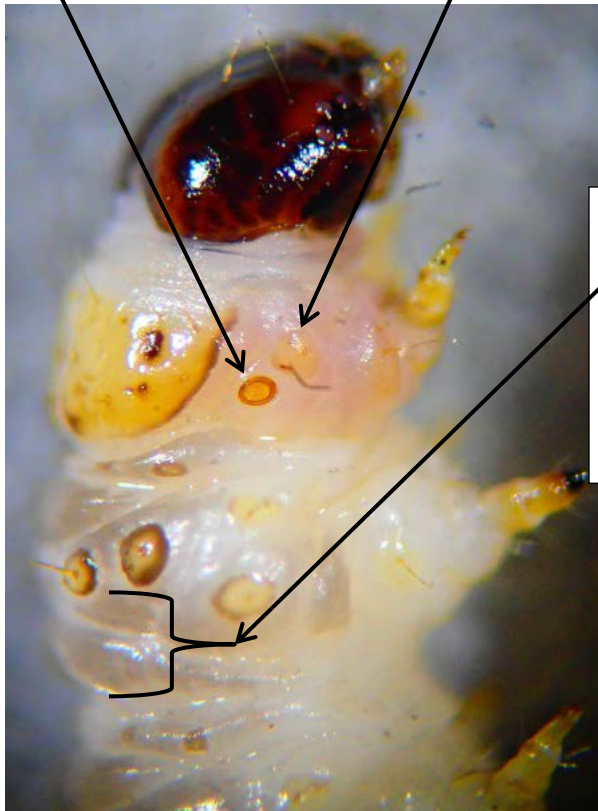
European Corn Borer



Notice difference in size of spiracle on the prothorax.

ECB spiracle

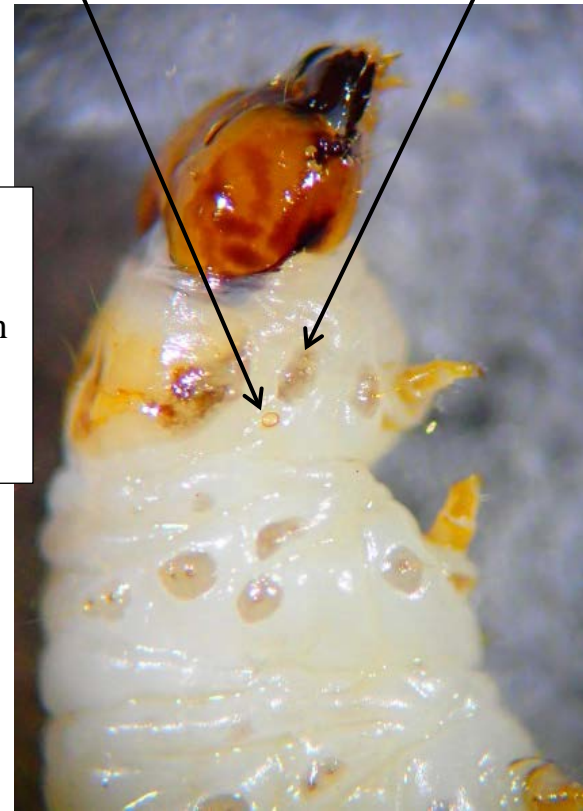
ECB prespiracular pinaculum setae is more rounded with lateral setae forming more of a triangle.



ECB has dark skin pigment creating a pattern on the dorsal surface.

CM spiracle

CM prespiracular pinaculum setae is more of an oval with lateral setae forming a line.



ECB (left) shows a clear pattern of darkened skin pigment and the setae have a dark ring around them and CM (right) shows spots around setae.

