

Review of 2015

Hudson Valley Research Laboratory



www.hudsonvalleyresearchlab.org/

- **HVRL Inc.**
 - Membership
 - Partnerships
- **Research Trials**
 - Cornell Horticulture, Plant Pathology & Entomology
 - ENYCH Extension
- **Web based outreach**



Review of 2015 Hudson Valley Research Laboratory

HVRL Inc. 501 (C) 3 not for profit

- Governed by a 11 member Board of Directors

* President - Randy Pratt

* Vice President – Thom Waz

* Treasurer – Brad Clarke

Jeff Crist

Gary Samascott

Amy Hepworth

Barth Davenport

Sarah Dressel

David Fraleigh – Open seat

Robert Rowe

Open seat



Review of 2015

Hudson Valley Research Laboratory

HVRL Inc. 501 (C) 3 not for profit

- Governed by a 11 member Board of Directors
- Yearly grower membership is a \$500.00 donation
 - Operations and maintenance of the facility
- Partnership requirements between CALS & HVRL

CALS Requirements: Economic Sustainability

- Members / other Ag supprt partners provide 3 years of operating expences (Banked)
- CALS supports 2 University faculty and 2 staff

Review of 2015 Hudson Valley Research Laboratory

HVRL Inc.

CALS Requirements: Safety of field and laboratory

- Meet all safety requirements
 - Worker safety (Woelfersheim)
 - Yearly training and respirator fit tests
 - Buildings, farm and laboratory equipment
 - Laboratory, pesticide facility, barns
 - State fire codes
 - Equipment inspections

Review of 2015

Hudson Valley Research Laboratory

HVRL Inc.

Partnerships:

- Local Economies Project
 - Grant \$100,000/year for 3 years
 - 2016 Year 3
- Developing strategic planning for Agricultural Director
 - Long term sustainability
 - *Agricultural Director* for HVRL – Funding opportunities
 - Crowd Source Funding
 - Traditional grant funding

Review of 2015

Hudson Valley Research Laboratory

- **Web based outreach**

- HVRL Web Site
- 'Jentsch Lab' Blog Site
 - Subscription (free) – Email – 1-click 'Link to site'
 - Insect pest management updates
 - Archived efficacy trials
- Plant Pathology Blog Site: Dr Rosenberger
 - Subscription (free) – Email – 1-click 'Link to site'
 - Pest management updates
 - Archived

Hudson Valley Research Laboratory

Agricultural Research and Extension On Fruits and Vegetables Since 1923

WELCOME

PROGRAM HIGHLIGHTS

RESEARCH FACULTY & STAFF

SUPPORTING FOOD SECURITY

ABOUT US

CONTACT



Welcome



Developing a Sustainable Model for Agricultural Research and Extension

Ideally located in the heart of the fertile Hudson Valley growing region, the Hudson Valley Research Laboratory in Highland, New York, is a critical resource for this major production area of pome fruit and vegetable in Ulster County.

The scientists and researchers affiliated with the HVRL are dedicated to solving agricultural pro-

duction problems, with an emphasis on the communication of time-sensitive information to growers.

The HVRL is an independent 501(c)3 organization. A key partnership is this research is with [Cornell University's College of Agriculture and Life Sciences](#), a relationship that has evolved over time. Since 2013, in an effort to most effectively reach the broad needs of stakeholders in this region, the model for funding and collaboration has been growing to become a model of public-private partnerships in support of agricultural research.



Golden Delicious at harvest

SUPPORT SUSTAINABLE FARMING PRACTICES IN THE NORTHEAST

We need your help to continue providing research and education to the local and regional farming community.

For more information navigate to our Support Food Security Page. The HVRL is an independent 501(c)3 organization. Tax deductible donations can be made directly to:

Hudson Valley Research Lab, Inc.
P.O. Box 727
3357 US Highway 9W
Highland, NY 12528

Ph: 845.691.7151



Provides:

- Grower Navigation

Links to:

- New Employees
- Media
- Gov't.
- Supporters

Maintains

- Archived Reports
- History of HVRL

THE JENTSCH LAB

INSECT BIOLOGY, ECOLOGY, AND MANAGEMENT IN HUDSON VALLEY AGRICULTURAL COMMODITY



WELCOME

ENTOMOLOGY

BROWN MARMORATED STINK BUG

INVASIVES

ORGANIC AG. RESEARCH

TREE FRUIT

VEGETABLE

SWEET CORN

SMALL FRUIT

GRAPE

IN THE NEWS

Provides:

- Production pest management updates

Maintains Archived:

- Efficacy Reports
- Weekly alerts & Yearly presentations

Welcome to the Jentsch Lab



HVRL ENTOMOLOGY STAFF

Our research and extension outreach program is directed by [Cornell University's Department of Entomology](#) and located at the [Hudson Valley Laboratory, in Highland, NY](#). We are a part of the [New York State Agricultural Experiment Station in Geneva, NY](#), with the laboratory building owned by a non-profit cooperative tree fruit grower organization (HVRL Inc.). This cooperative partnership with the [College of Agriculture and Life Science \(CALS\)](#) and [Cornell Cooperative Extension \(CCE\)](#) has provided agricultural Research and Extension on Tree Fruits and Vegetables in the Hudson Valley since 1923.

Research-based information continues to be provided to New York farmers through educational programs organized by Cornell Cooperative Extension and participating associations. Horticultural plant protection programs at the Hudson Valley Lab are especially important to

sustaining the viability of agriculture in the Hudson Valley and Northeast as agricultural production is ultimately the best way to preserve open space and economic stability in the rapidly developing corridor between Albany and New York City.

ARCHIVES

- [January 2016](#)
- [November 2015](#)
- [October 2015](#)
- [September 2015](#)
- [August 2015](#)
- [July 2015](#)
- [June 2015](#)
- [May 2015](#)
- [April 2015](#)
- [March 2015](#)
- [February 2015](#)
- [January 2015](#)
- [December 2014](#)
- [November 2014](#)
- [October 2014](#)
- [September 2014](#)
- [August 2014](#)
- [July 2014](#)
- [June 2014](#)
- [May 2014](#)
- [April 2014](#)

Summary of
Research and Extension Activities at
Hudson Valley Research Laboratory
for 2013 – 2015

Dave Rosenberger, Plant Pathologist (Retired)
Gemma Reig Cordoba, Horticulturist
Peter Jentsch, Entomologist
Albert Woelfersheim, Facilities Coordinator
Dan Donahue, ENY Horticulture Team Tree Fruit Specialist
With contributions from Ulster County Extension Educators
Teresa Rusinek, Jim O'Connell



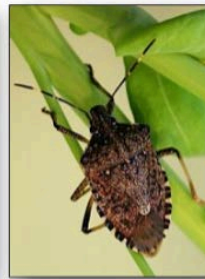
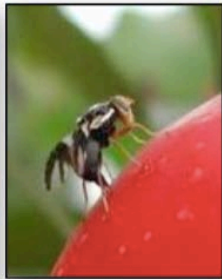
RESULTS OF 2015 INSECTICIDE AND ACARICIDE STUDIES IN EASTERN NEW YORK

P. J. Jentsch
Senior Extension Associate Entomologist

Cornell University's Hudson Valley Research Lab
P.O. Box 727 Highland NY 12528

Tel: 845-891-6516
FAX: 845-891-2719
Mobile: 845-417-7465
e-mail: pjj5@cornell.edu

Native and Emerging Insect Management for Tree Fruit In Eastern NY



Long Island Agricultural Forum
January 14, 2016

Suffolk County Community College; Eastern Campus
Riverhead, New York Peconic Building.

Peter Jentsch
Senior Extension Associate – Entomology



.....Tim Lampasona
.....Hank Grimsland
..... Mike Fraatz
..... Jared Jaeger
..... Jonathan Binder
.....Kathrine Aponte
..... Zachary Coto
..... Albert Woelfersheim
..... Donna Clark
..... Joe Whalen

NOT FOR PUBLICATION OR DISTRIBUTION
OUTSIDE RESEARCH OR DEVELOPMENT GROUPS

PLANT PATHOLOGY AT THE HUDSON VALLEY LAB

HISTORICAL REPORTS AND CONTINUING UPDATES FROM DR. DAVE ROSENBERGER



[HOME](#) [BLOG](#) [APPLE DISEASES](#) [STONE FRUITS](#) [RESEARCH RPTS](#) [HVL HISTORY](#) [DAVE'S BIO](#) [BEYOND SCIENCE](#)

Background and Purpose

Although I retired in February of 2014 after 36 years as the tree fruit disease specialist at Cornell's Hudson Valley Laboratory, I am still very interested in the both historical and recent developments in my profession (plant pathology) and in the commercial fruit industry in the Hudson Valley. Over the two years since I retired, I have continued to attend scientific conferences and fruit grower meetings so as to stay informed about new developments. This website serves as an archive for some of the information, observations, and photos generated during my career. The blog within this website provides a mechanism sharing seasonal observations and/or developments that may be of interest to fruit growers and fruit extension professionals.

The the specific objectives for this website are to provide the following:

- An on-going [BLOG](#) of observations and seasonal events that relate to tree fruit diseases and their control in the mid-Hudson Valley based on observations from orchards at the Hudson Valley Lab in Highland, NY or from nearby commercial orchards

NOTE: Those wishing to receive e-mail alerts when I post updates on the blog-page should

CORNELL UNIVERSITY IN THE HUDSON VALLEY:

Agricultural Research and Extension on Tree Fruits and Vegetables since 1923

Photo above: One of the research orchards at the Hudson Valley Lab.

SEARCH THIS SITE

SUBSCRIBE FOR E-MAIL ALERTS FOR NEW POSTS:

ex: someone@mydomain.com

RECENT BLOG POSTS

- [RIMpro, A Useful Apple Scab Model for 2016](#) 21 Jan 2016



[HOME](#) [BLOG](#) [APPLE DISEASES](#) [STONE FRUITS](#) [RESEARCH RPTS](#) [HVL HISTORY](#) [DAVE'S BIO](#) [BEYOND SCIENCE](#)

RIMpro, A Useful Apple Scab Model for 2016

RIMpro contains a proprietary apple scab model that is useful for (i) identifying the start of the scab season, (ii) quantifying risks associated with key infection periods between green tip and first cover, and (iii) determining the end of the primary scab season. RIMpro will provide more accurate information on apple scab infection risk than the traditional pseudothecial squash mounts that have been used for many years to assess apple scab ascospore maturity in spring. I've been working with RIMpro on a trial basis for the past two seasons, and I'm very impressed with the apple scab model. I suspect that over the next few years it will become as important for apple scab management as MaryBlyt has become from fire blight management.

More information about RIMpro is available in [this PDF file](#).

For information about a meeting to introduce RIMpro and a special RIMpro subscription offer for 2016, go to <http://www.redtomato.org/summit/>.

Review of 2015 Hudson Valley Research Laboratory

- **Research Trials**

- Cornell Horticulture, Plant Pathology & Horticulture
- ENYCH Extension Activities

Annual Report

Hard Copy (Available today)

Membership

HVRL / 'Jentsch Lab' web sites

Summary of
Research and Extension Activities at
Hudson Valley Research Laboratory
for 2013 – 2015

Dave Rosenberger, Plant Pathologist (Retired)

Gemma Reig Cordoba, Horticulturist

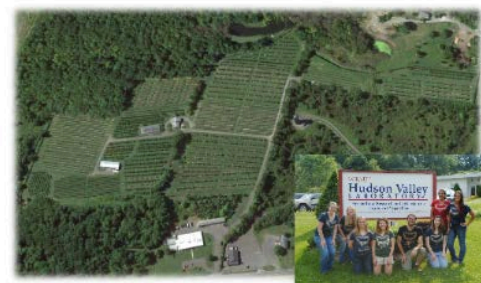
Peter Jentsch, Entomologist

Albert Woelfersheim, Facilities Coordinator

Dan Donahue, ENY Horticulture Team Tree Fruit Specialist

With contributions from Ulster County Extension Educators

Teresa Rusinek, Jim O'Connell



Highland, NY
Released February 2016
(V.1)

Thank You



For the Faithful Support from the Tree Fruit Industry