



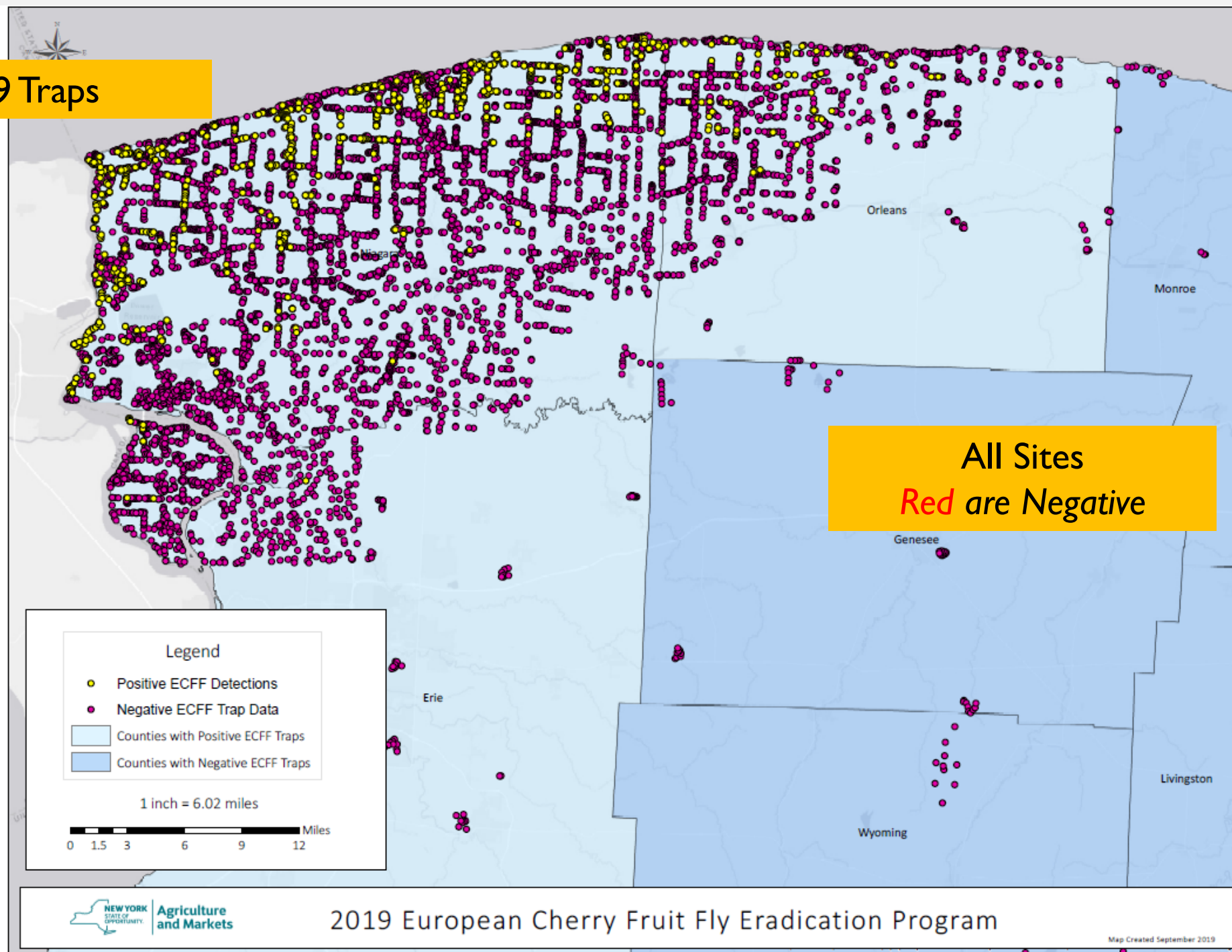
# Agriculture and Markets

## EUROPEAN CHERRY FRUIT FLY 2020 PLANS

New York State Department of Agriculture and Markets Division of Plant Industry

February 2020

## 2019 Traps

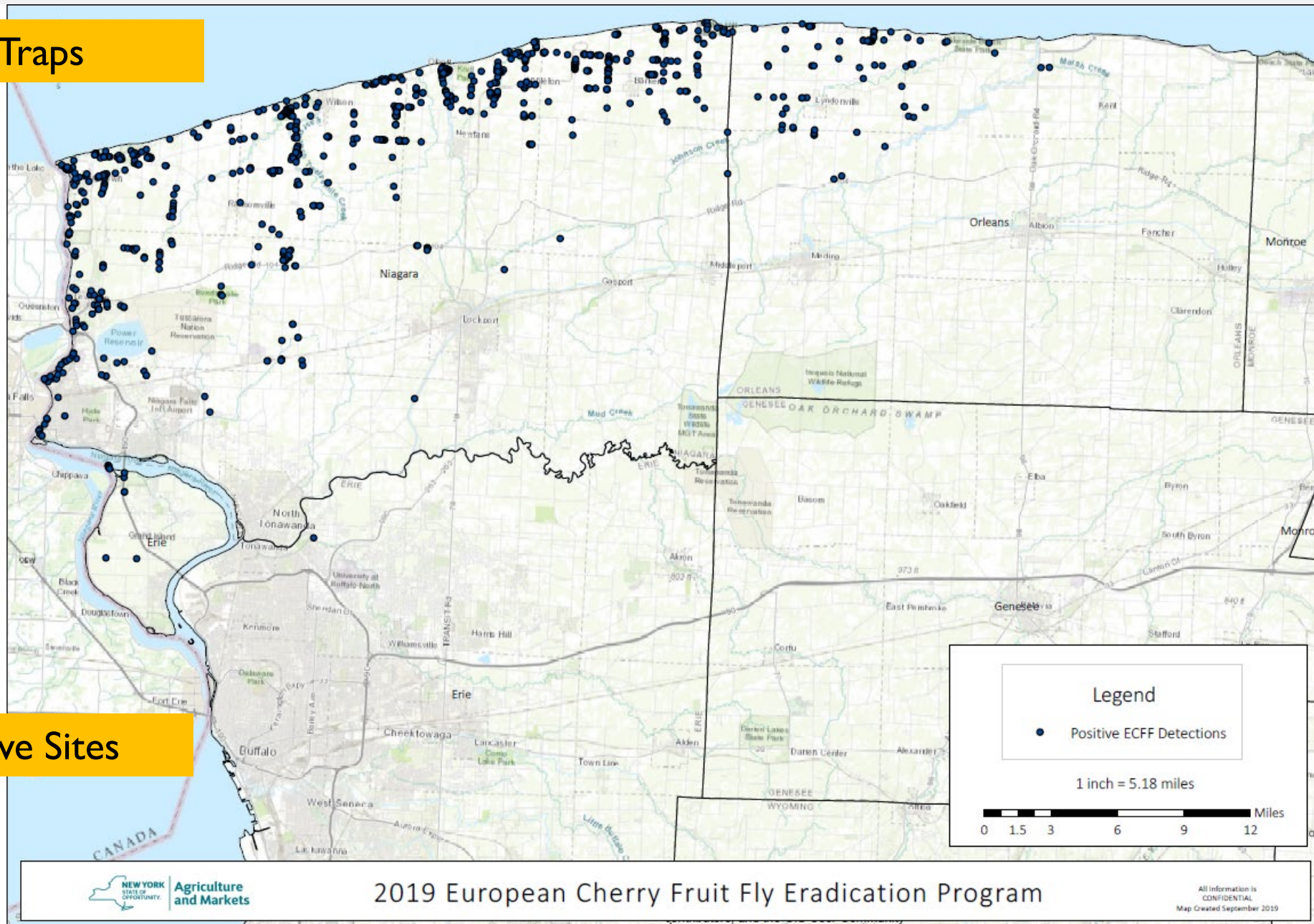


Cooperative  
Program



## 2019 Traps

All Positive Sites





**Sites ECFF  
found**

**3 Counties**

11 Orchard Sites

1,111 “Park” Sites

Total 1,121 Sites

**Trapping  
29 Counties**

331 Orchard Sites

12,436 “Park” Sites

Total 12,767 Sites

**Quarantine Area**

*11,769 “Park” Sites*

*Niagara*

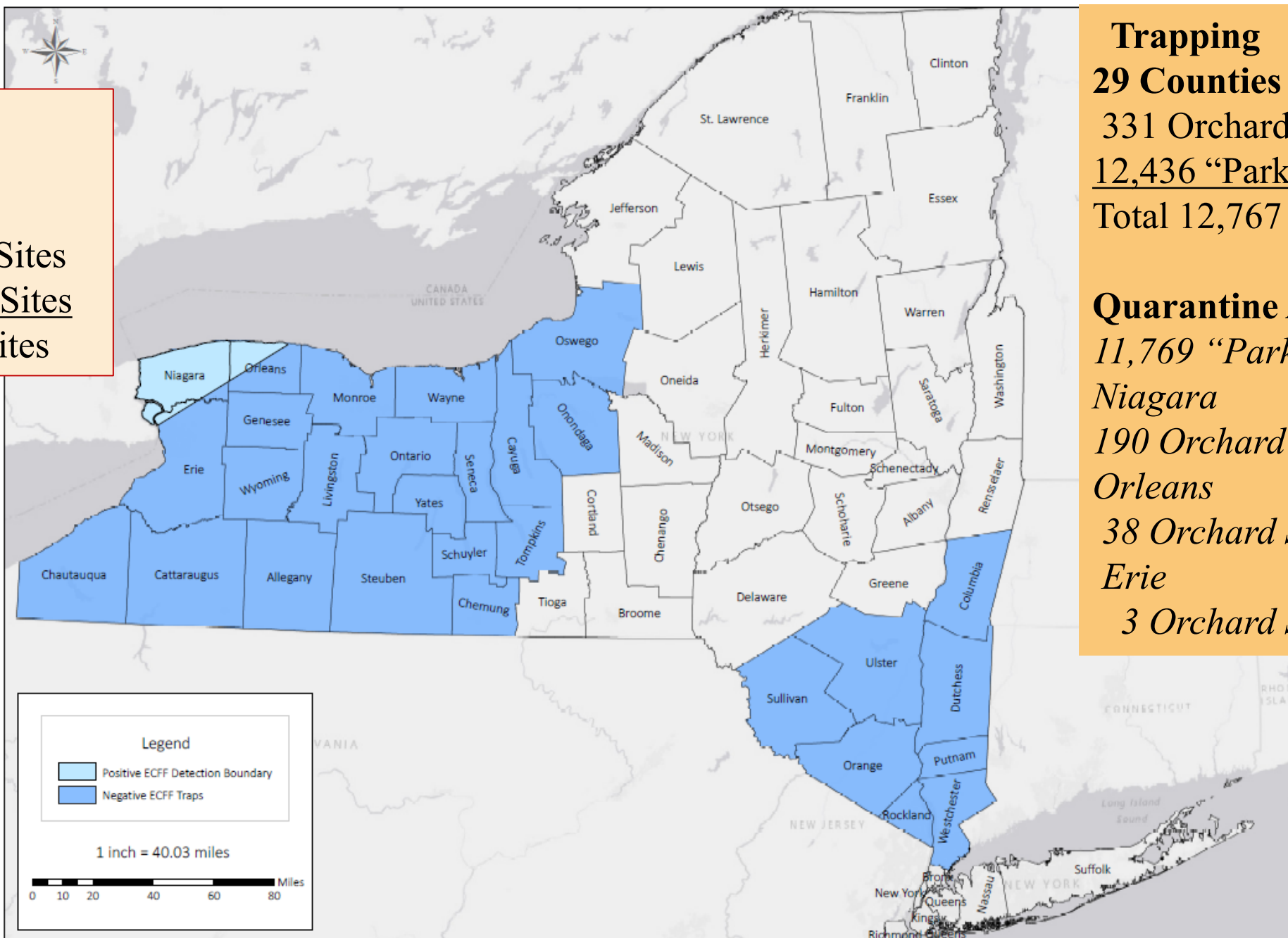
*190 Orchard Sites*

*Orleans*

*38 Orchard Sites*

*Erie*

*3 Orchard Sites*



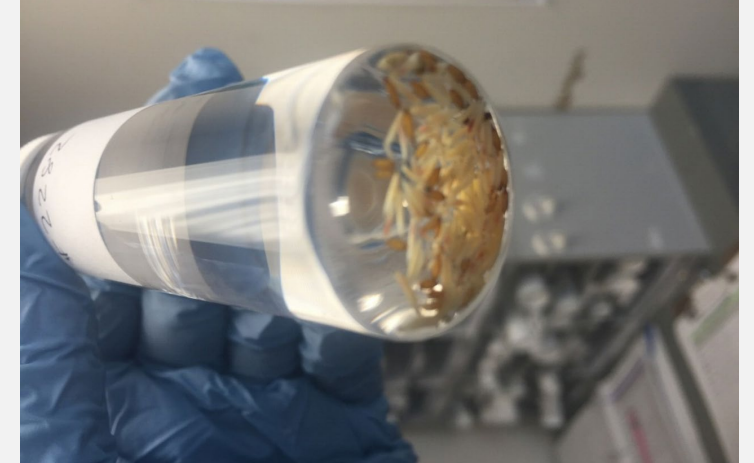
## Positive Sites in Commercial Orchards

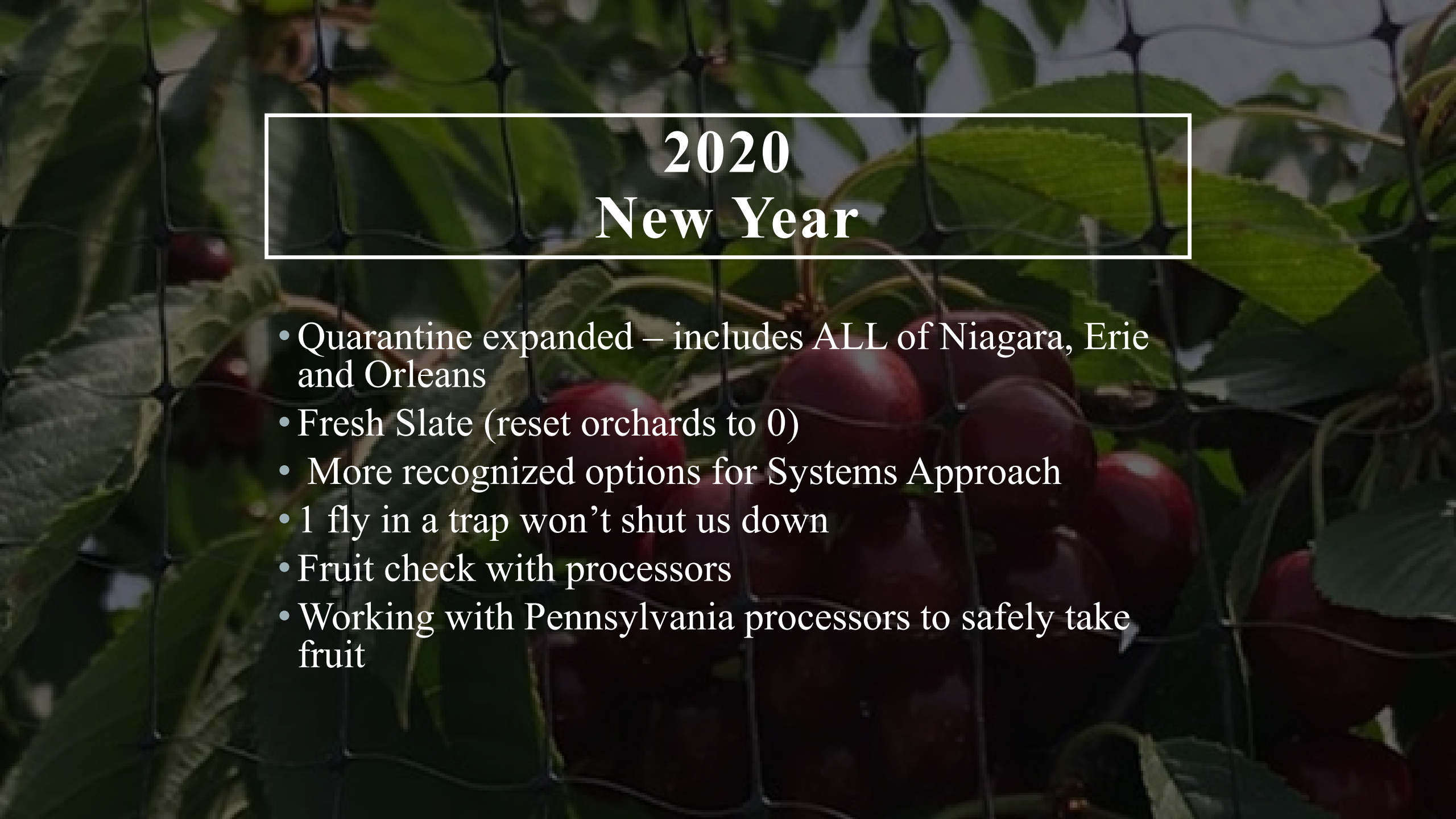
- 11 traps with ECFF in Commercial Orchards
- 10 positive sites – only 1 repeat
- 27 traps with ECFF in 1 abandoned orchard
- 7 of 8 repeat positive trap sites in abandoned orchard
- What does this mean?



# Fruit Collection in 2019 NYSDAM & USDA

Hosts of ECFF	Larvae found
Honeysuckle ( <i>Lonicera</i> )	52
Tart Cherry from Orchard	0
Sweet Cherry from Orchard	0
Wild Cherry ( <i>Prunus avium</i> )	1
Chokecherry ( <i>P. virginiana</i> )	15
5 other alternate hosts	0
Other finds include Drosophila, Diptera, Coleoptera	





# 2020 New Year

- Quarantine expanded – includes ALL of Niagara, Erie and Orleans
- Fresh Slate (reset orchards to 0)
- More recognized options for Systems Approach
- 1 fly in a trap won't shut us down
- Fruit check with processors
- Working with Pennsylvania processors to safely take fruit

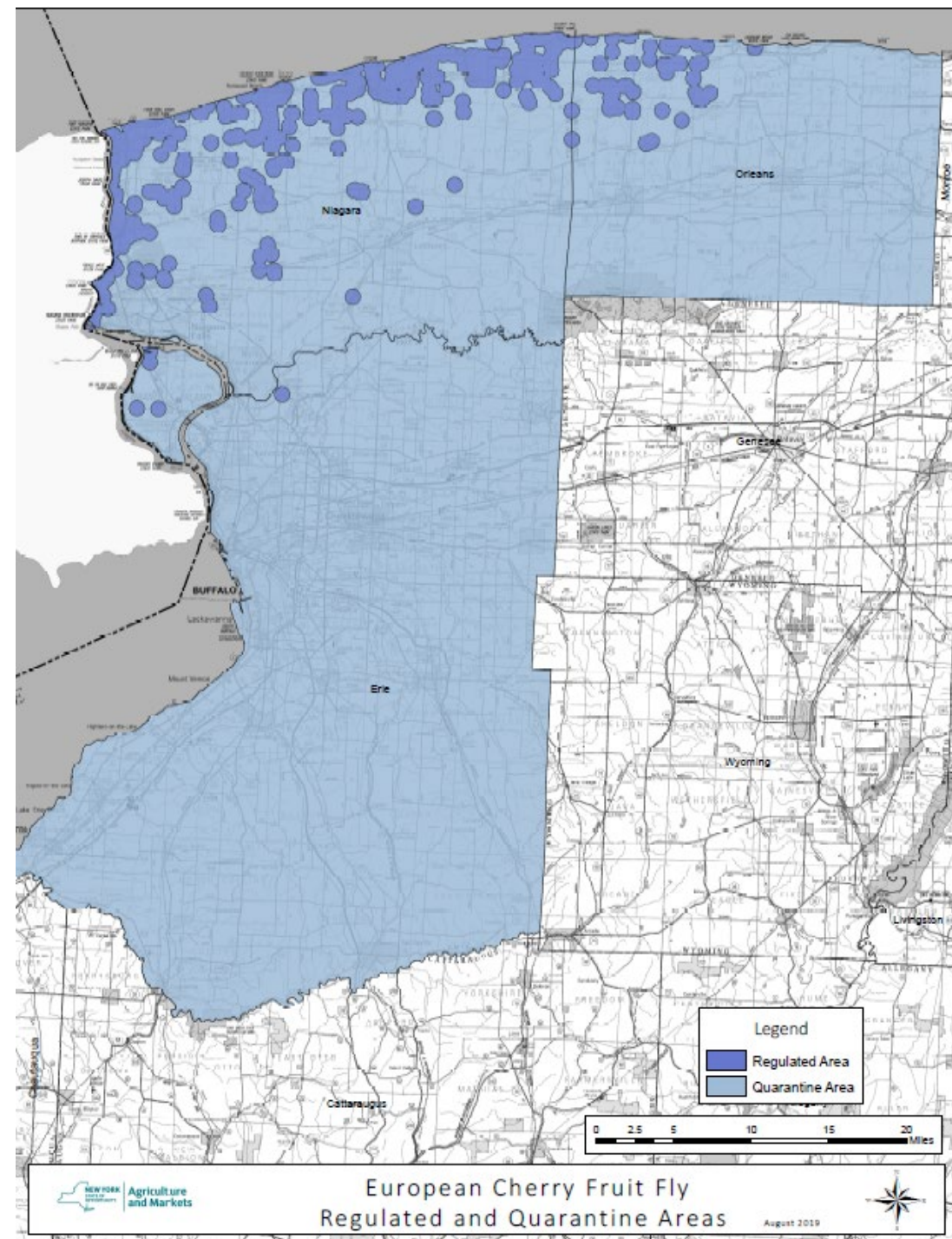


# ECFF 2020 REGULATED AND QUARANTINE

The Regulated Area is 0.5  
mile area around all positive  
ECFF detections

Quarantine Area is all of  
Niagara, Orleans and Erie  
County

Growers within these areas  
enter into a compliance  
agreement





# ECFF 2020 SYSTEMS APPROACH

Product Name	Active Ingredient
Sevin 4F	carbaryl
Sevin 80	carbaryl
Solupak	carbaryl
Sevin XLR Plus	carbaryl
Imidan 70W	phosmet (not on sweet cherry)
Asana XL	esfenvalerate
0.66EC	
Baythroid XL	cyfluthrin
1EC	
Warrior II	lambda-cyhalothrin
2.08CS	
Assail 30SG	acetamiprid
Assail 70WP	acetamiprid
Delegate 25WG	spinetoram
§Entrust 2SC	spinosad
§Entrust 80WP	spinosad
GF-120NF	spinosad & bait

## Specimen Label

Dow AgroSciences

**GF-120® NF Naturalyte®**  
Fruit Fly Bait

Insecticidal Bait

®Trademark of Dow AgroSciences LLC

For selective attractance and control of multiple species of tephritid fruit flies infesting any tree, fruit, nut, vine, vegetable or food crop and ornamentals, and on vegetation which may serve as resting sites for adult flies

Group	5	INSECTICIDE
-------	---	-------------

Active Ingredients:

spinosad (a mixture of spinosyn A and spinosyn D) ..... 0.02%

Other ingredients: includes water, sugars and plant proteins and extracts ..... 99.98%

Total ..... 100.00%

Contains 0.02% active ingredient on a weight basis – 0.002 lb ai per gallon



For Organic Production

**OMRI®**  
Listed

Listed by the Organic Materials Review Institute (OMRI) for use in organic production.

### Precautionary Statements

#### Hazards to Humans and Domestic Animals

EPA Reg. No. 62719-498

## CAUTION

Harmful If Swallowed

Wash thoroughly with soap and water after handling.

### Personal Protective Equipment (PPE)

Applicators and other handlers must wear:

- Long-sleeved shirt and long pants
- Shoes plus socks

Follow manufacturer's instructions for cleaning/maintaining PPE. If unable to clean thoroughly, use detergent and hot water. Wash and dry before reuse. Do not reuse for other laundry.

### Use Precautions

Users should:

- Wash hands after using this product.

in the area during application. For any requirements specific to your state or tribe, consult the agency responsible for pesticide regulation.

### Agricultural Use Requirements

Use this product only in accordance with its labeling and with the Worker Protection Standard, 40 CFR Part 170. This Standard contains requirements for the protection of agricultural workers on farms, forests, nurseries, and greenhouses, and handlers of agricultural pesticides. It contains requirements for training, decontamination, notification, and emergency assistance. It also contains specific instructions and exceptions pertaining to the statements on this label about personal protective equipment (PPE), and restricted entry interval. The requirements in this box only apply to uses of this product that are covered by the Worker Protection Standard.

Do not enter or allow worker entry into treated areas during the restricted entry interval (REI) of 4 hours.

PPE required for early entry to treated areas that is permitted under the Worker Protection Standard and that involves contact with anything that has been treated, such as plants, soil, or water, is:

- Coveralls
- Waterproof gloves
- Shoes plus socks

### Non-Agricultural Use Requirements

The requirements in this box apply to uses of this product that are NOT within the scope of the Worker Protection Standard for Agricultural Pesticides (40 CFR Part 170). The WPS applies when this product is used to produce agricultural plants on farms, forests, nurseries, or greenhouses.

**Entry Restrictions for Non-WPS Uses:** There are no specific entry requirements following application of this product when applied by government agencies in area-wide eradication and prevention programs.

### Storage and Disposal

Do not contaminate water, food or feed by storage or disposal.

**Pesticide Storage:** Store in original container only. In case of leak or spill, contain material with absorbent materials and dispose as waste.

**Pesticide Disposal:** Wastes resulting from the use of this product must be disposed of on site or at an approved waste disposal facility.

**Nonrefillable containers 5 gallons or less:**

**Container Handling:** Nonrefillable container. Do not reuse or refill this container.

Triple rinse or pressure rinse container (or equivalent) promptly after emptying. **Triple rinse** as follows: Empty the remaining contents into application equipment or a mix tank and dump. Rinse by allowing water to flow begins to drip. Fill the container 1/4 full with water, recap, and shake for 10 seconds. Pour rinse water into other container or a

back or store rinsate for later use. Do not reuse rinsate. Dispose of rinsate in accordance with label instructions. This procedure two

times. After the final rinse, dump the rinsate in the application equipment or a mix tank. Fill the container 1/4 full with water. Recap, and shake for 10 seconds. Pour rinse water into other container or a

back or store rinsate for later use. Do not reuse rinsate. Dispose of rinsate in accordance with label instructions. This procedure two

times. After the final rinse, dump the rinsate in the application equipment or a mix tank. Fill the container 1/4 full with water. Recap, and shake for 10 seconds. Pour rinse water into other container or a

back or store rinsate for later use. Do not reuse rinsate. Dispose of rinsate in accordance with label instructions. This procedure two

times. After the final rinse, dump the rinsate in the application equipment or a mix tank. Fill the container 1/4 full with water. Recap, and shake for 10 seconds. Pour rinse water into other container or a

back or store rinsate for later use. Do not reuse rinsate. Dispose of rinsate in accordance with label instructions. This procedure two

times. After the final rinse, dump the rinsate in the application equipment or a mix tank. Fill the container 1/4 full with water. Recap, and shake for 10 seconds. Pour rinse water into other container or a

back or store rinsate for later use. Do not reuse rinsate. Dispose of rinsate in accordance with label instructions. This procedure two

times. After the final rinse, dump the rinsate in the application equipment or a mix tank. Fill the container 1/4 full with water. Recap, and shake for 10 seconds. Pour rinse water into other container or a

back or store rinsate for later use. Do not reuse rinsate. Dispose of rinsate in accordance with label instructions. This procedure two

times. After the final rinse, dump the rinsate in the application equipment or a mix tank. Fill the container 1/4 full with water. Recap, and shake for 10 seconds. Pour rinse water into other container or a

back or store rinsate for later use. Do not reuse rinsate. Dispose of rinsate in accordance with label instructions. This procedure two

times. After the final rinse, dump the rinsate in the application equipment or a mix tank. Fill the container 1/4 full with water. Recap, and shake for 10 seconds. Pour rinse water into other container or a

back or store rinsate for later use. Do not reuse rinsate. Dispose of rinsate in accordance with label instructions. This procedure two

times. After the final rinse, dump the rinsate in the application equipment or a mix tank. Fill the container 1/4 full with water. Recap, and shake for 10 seconds. Pour rinse water into other container or a

back or store rinsate for later use. Do not reuse rinsate. Dispose of rinsate in accordance with label instructions. This procedure two

times. After the final rinse, dump the rinsate in the application equipment or a mix tank. Fill the container 1/4 full with water. Recap, and shake for 10 seconds. Pour rinse water into other container or a

back or store rinsate for later use. Do not reuse rinsate. Dispose of rinsate in accordance with label instructions. This procedure two

times. After the final rinse, dump the rinsate in the application equipment or a mix tank. Fill the container 1/4 full with water. Recap, and shake for 10 seconds. Pour rinse water into other container or a

back or store rinsate for later use. Do not reuse rinsate. Dispose of rinsate in accordance with label instructions. This procedure two

times. After the final rinse, dump the rinsate in the application equipment or a mix tank. Fill the container 1/4 full with water. Recap, and shake for 10 seconds. Pour rinse water into other container or a

8 additional pesticides  
now recognized Systems Approach

# Fresh Slate

- All orchards start at 0 detects
- Fresh cherry shipments out of quarantine are allowed (*Except for restricted areas*)
- Pennsylvania processor on board
- Threshold raised – 2+ flies
- Open dialogue





## 2020 Next Steps

- Keep NYS Cherries moving
- Growers sign Compliance Agreements
- Monitor Orchards for ECFF
- Move Cherries under Limited Permit
- Conduct trapping – in New York and other states
- More fruit collection
- Continue to work with all partners to contain ECFF
  - Growers, Processors, USDA, NYS IPM, Cornell University, Other states





## **Contact Information**

**Margaret Kelly**  
**Assistant Director**  
**Division of Plant Industry**  
**(518) 457 -2087**  
**[Margaret.Kelly@agriculture.  
ny.gov](mailto:Margaret.Kelly@agriculture.ny.gov)**