

Petal Fall Insect Update LOFP Virtual PF Meeting May 29, 2020

**Art Agnello, Entomology
Cornell AgriTech, Geneva, NY
ama4@cornell.edu**

Plum Curulio

- Petal fall (Macs): May 26 (Geneva); currently mostly at Petal Fall/early fruit set in Wayne Co.
- NEWA Insect Models:
Geneva – 98 DD out of 308
(~40 more forecast over next 5 days)
- Options: Imidan, Actara, Avaunt, Verdepryn, Exirel, Besiege, Minecto Pro [pyrethroids: moderate]
- expect a shorter oviposition period if current temp trend continues => PF + 1 cover spray



European Apple Sawfly

Imidan, Actara, Altacor, Avaunt, Exirel, Voliam Flexi (chlorantraniliprole/thiamethoxam)



Oriental Fruit Moth

- Biofix May 15 (Geneva); May 26 (Wayne Co)

Apples: 1st spray recommended @ 350-375 DD (45F) [55-60% hatch]

NEWA Insect Models: Geneva – 309 DD / Sodus – 99 / Wmson – 98 / Lyndonville – 97

Options: Imidan, Altacor, Assail, Avaunt, Delegate, Exirel, Rimon, Verdepryn, *Intrepid*, *Grandevo*

Peaches: 175-190 DD (45F)

Options: Altacor, Assail, Delegate, Exirel, Verdepryn *Asana*, *Danitol*, *Warrior*

Mating Disruption: late for OFM, but CM/OFM options still might be considered – e.g., Isomate CM/OFM TT, or CM/OFM Mist; Suterra Puffer CM-OFM; Cidetrak OFM-L Meso



Codling Moth

Biofix 5/22 (Geneva); 5/26 (W of Roch and in Wayne Co.)

- 1st spray at 150 DD (50F) for ovicidal materials (Rimon, Intrepid, Esteem);
- 250-360 DD for larvicidal materials [Geneva 148, 77 near lake]

Options: Altacor, Assail, Delgate, Exirel, Besiege, (Imidan)

Mating disruption: Isomate CM/OFM TT, or CM/OFM Mist; Suterra Puffer CM-OFM, Cidetrak CMDA Combo Meso-A

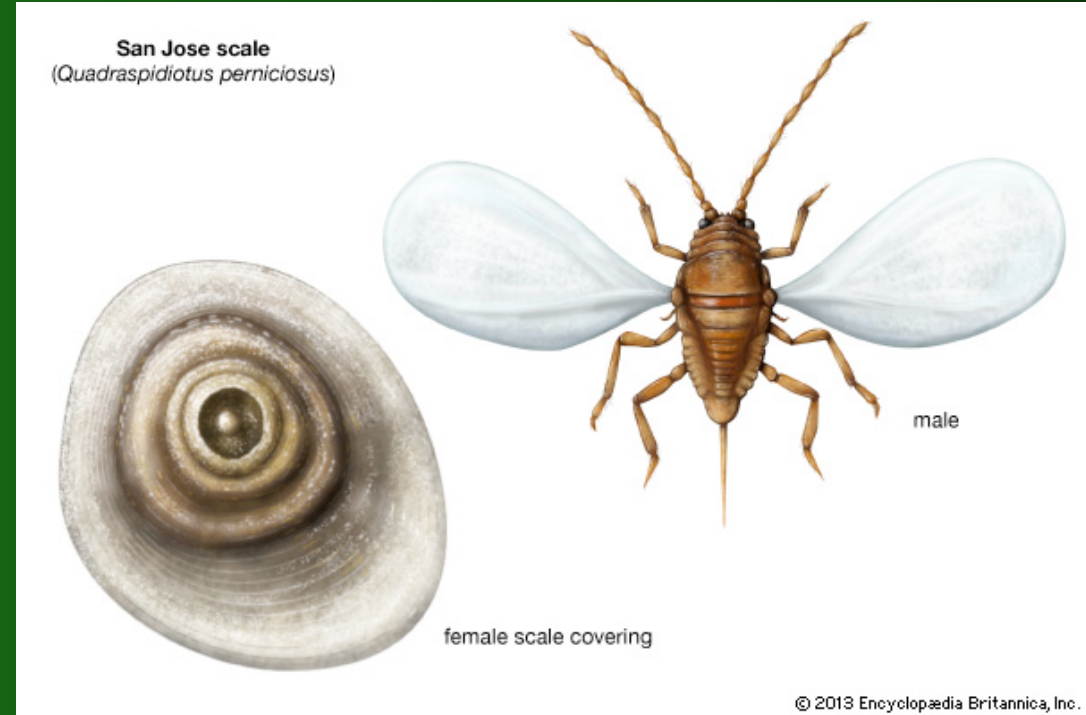


San Jose Scale

1st adults were just trapped today in Geneva,
probably within the week elsewhere in WNY

- Crawler emergence starts about 3 weeks after PF / 310 DD (50F) from biofix
- historical records: June 19 as mean emergence date (Geneva)

Options: Movento at PF and 1st/2nd Cover;
OR Esteem, Centaur, Sivanto, Venerate at crawler emergence



Woolly Apple Aphid

A few reports of aerial colonies showing up in Wayne Co. in bud scars/shoot angles

- Options: Diazinon; Movento (PF-1C) or whenever infestations noted; *Assail*, *Sivanto* also options



Black Stem Borer

Adults 1st caught on May 7; high numbers this week (peak flight)

Options: trunk sprays (2 rec'd) using Lorsban, Warrior, Danitol – at PF and in 2 weeks

Lorsban likely to be banned in NYS by end of 2021.



Brown Marmorated Stink Bug

Too early to think about treatment, but if found inside orchard later in summer, should consider trt

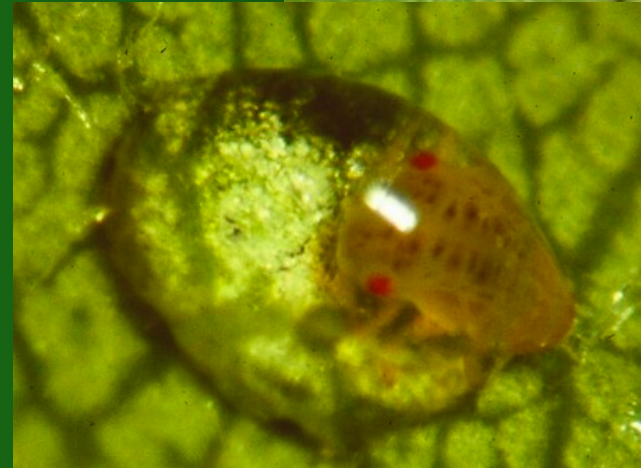
- probable Section 18 for bifenthrin [Brigade/ Bifenture] in NY again this year; alternatively, Endigo, Besiege, Lannate



Pear Psylla

Nymphs likely present, summer adults soon

- Options: Agri-Mek, Actara, Admire, Asana, Assail, Centaur, Danitol, Delegate, Esteem, Exirel, Magister, Movento, Nexter, Portal, Sivanto Prime, Warrior, Minecto Pro, Voliam Flexi, Agri-Flex



Gypsy Moth

Mid-stage larvae numerous in some apple plantings;

- Options: Imidan, Delegate, Danitol, and the B.t.s (Dipel, Deliver, Javelin, etc.)



Stone Fruit

Green peach aphid

Potentially present beginning at bloom

- Options: Actara, Admire, Assail, Beleaf, Movento

Black cherry aphid

After shuck fall

- Options: Admire, Assail, Beleaf, Lorsban, Movento, Sevin, Asana, Baythroid, Warrior

Cherry fruit fly

Adults usually start flying in mid-June, but prudent to begin sprays soon after shuck split

- Options: Imidan (tarts only), Sevin, Diazinon, Assail, Actara, Delegate, pyrethroids

Lesser peachtree borer

1st adults caught this week in Geneva & along the lake; mating disruption using Isomate PTB Dual still possible

