



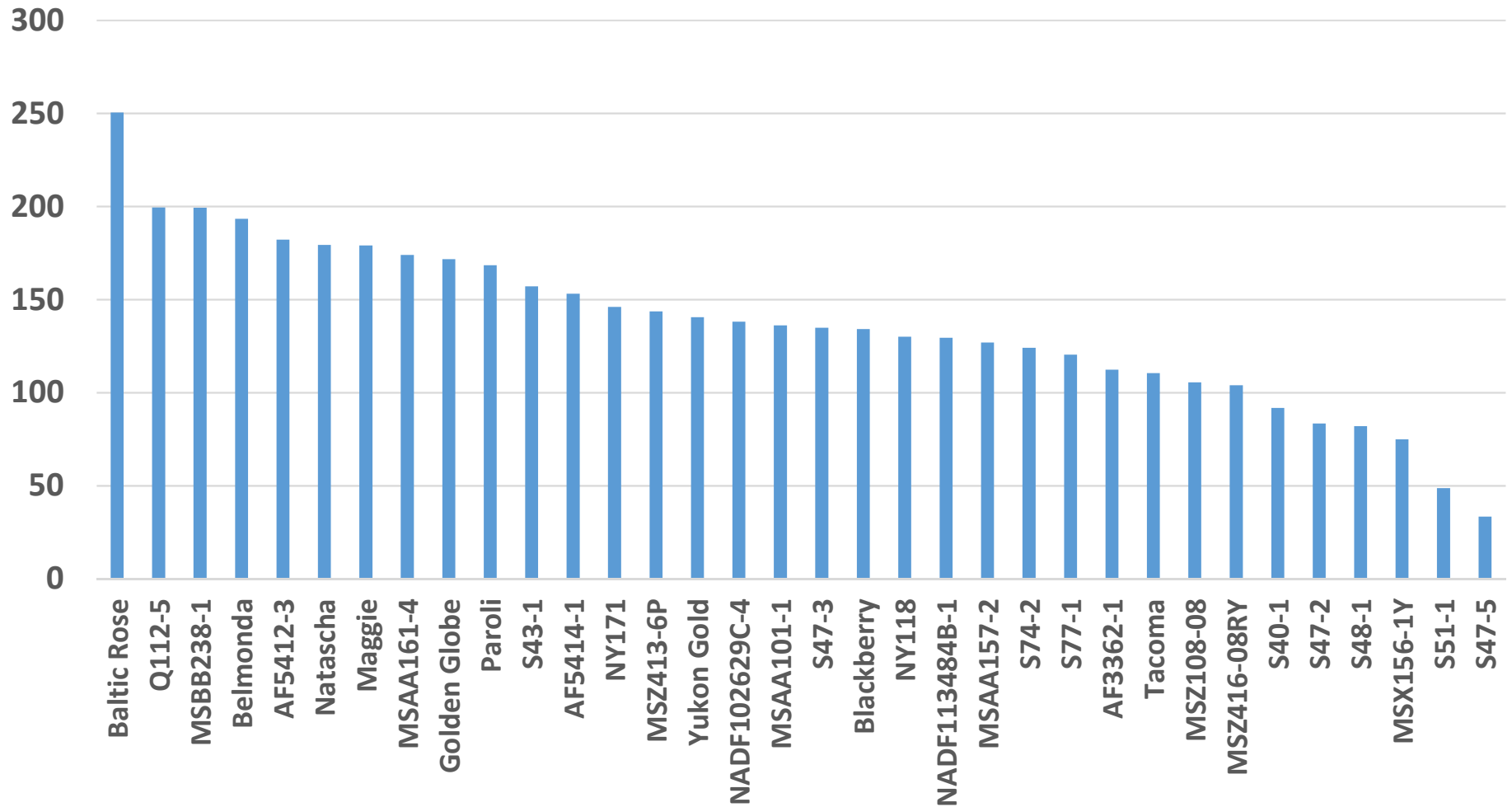
Cornell Cooperative Extension

Eastern NY Commercial Horticulture Program

2020 Potato Variety Trial



Total Marketable Yield (Cwt)



Trial Information

- Columbia County
- Conventional
- Row spacing: 30", in row spacing: 12"
- Planted 5/7/20
- Irrigated
- Harvested October 12th and graded October 27th and November 2nd using grader with chains set at various lengths as seen in data
- Taste testing information will be coming soon

White Skin, White Flesh Lines



NADF102629C-4

- University of Maine
- White skin, white flesh
- Round shape with some oblongs, very nice looking
- Fairly smooth skin that is bright white
- Great size, with mostly large A's and some chef's, all very uniform
- Culls were mostly cracks



	Yield of Marketable Tubers by Size Distribution (cwt.)			% of Marketable Yield by Size Distribution		
	Chef's (> 3")	#1 "A's" (> 2 1/2")	"B's" (< 2")	Chef's (%)	#1 "A's" (%)	"B's" (%)
Total Marketable Yield (Cwt)¹	46	87	5	33	63	4

NY171

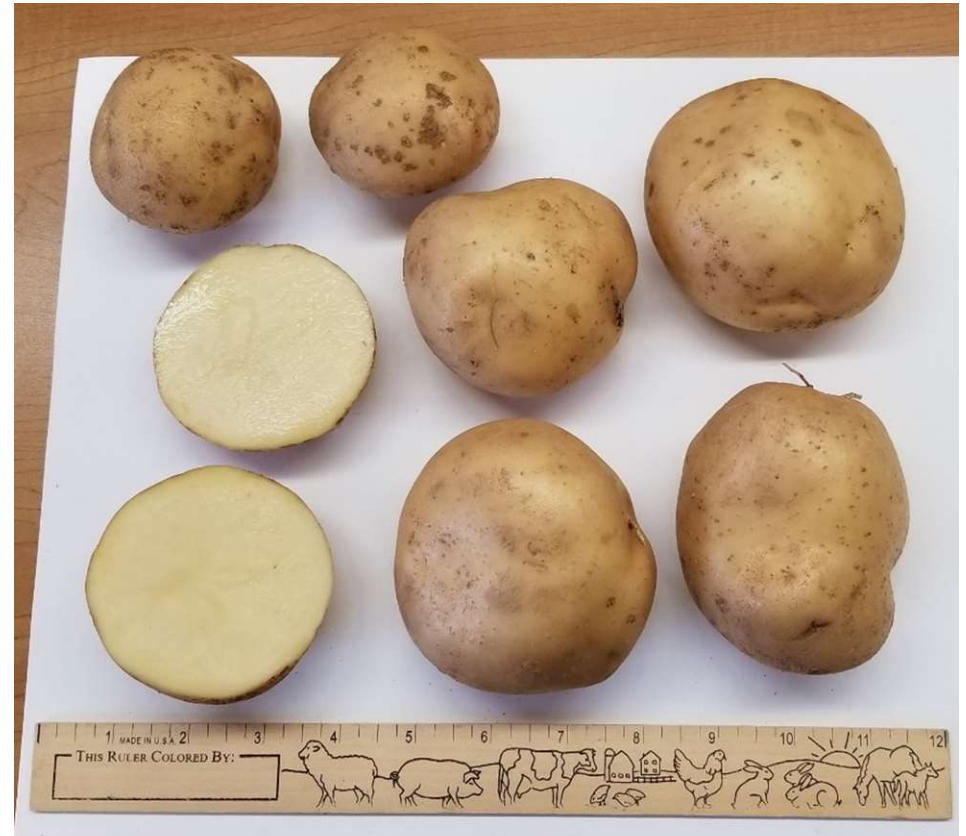
- Cornell University
- White skin with dark purple splashes, white flesh
- Oblong and flat shape
- Very nice looking overall
- Skin is smooth and bright
- Some eyes are raised
- Some variation in sizes, chef's, A's and B's all present and look nice



	Yield of Marketable Tubers by Size Distribution (cwt.)			% of Marketable Yield by Size Distribution		
	Chef's (> 3")	#1 "A's" (> 2 1/2")	"B's" (< 2")	Chef's (%)	#1 "A's" (%)	"B's" (%)
Total Marketable Yield (Cwt)¹	42	88	16	29	60	11

Q112-5

- Cornell University
- White skin, white flesh
- Shape is variable, round or oblong flat
- Smooth skin, bright color
- Good size, with plenty of chef's and A's
- Few culls, mostly greeners and cracks
- Overall, very nice



	Yield of Marketable Tubers by Size Distribution (cwt.)			% of Marketable Yield by Size Distribution		
	Chef's (> 3")	#1 "A's" (> 2 1/2")	"B's" (< 2")	Chef's (%)	#1 "A's" (%)	"B's" (%)
Total Marketable Yield (Cwt)¹	54	138	8	27	69	4



Q112-5

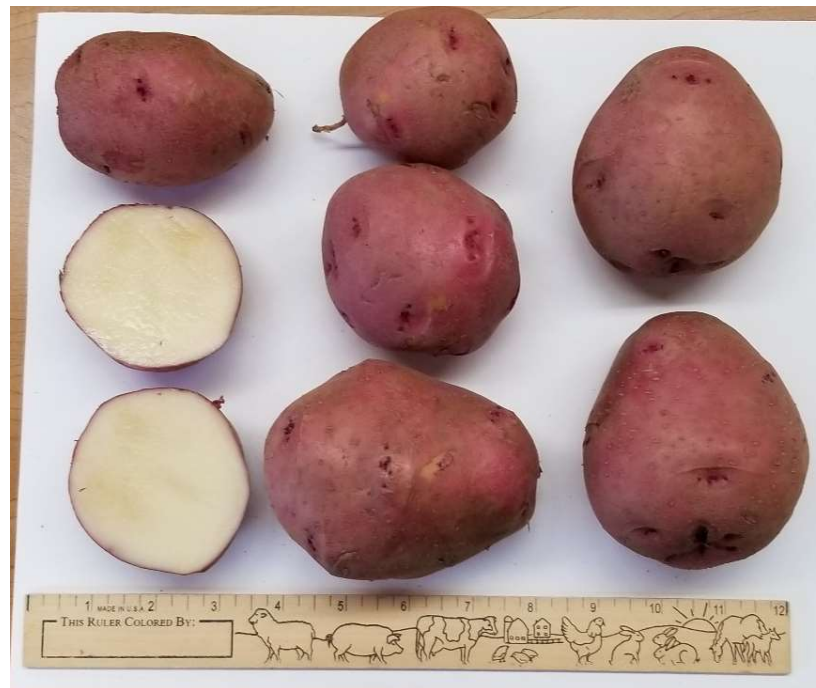


NY171



NADF102629C-4

Red Skin White Flesh Lines



NDAF 113484B-1

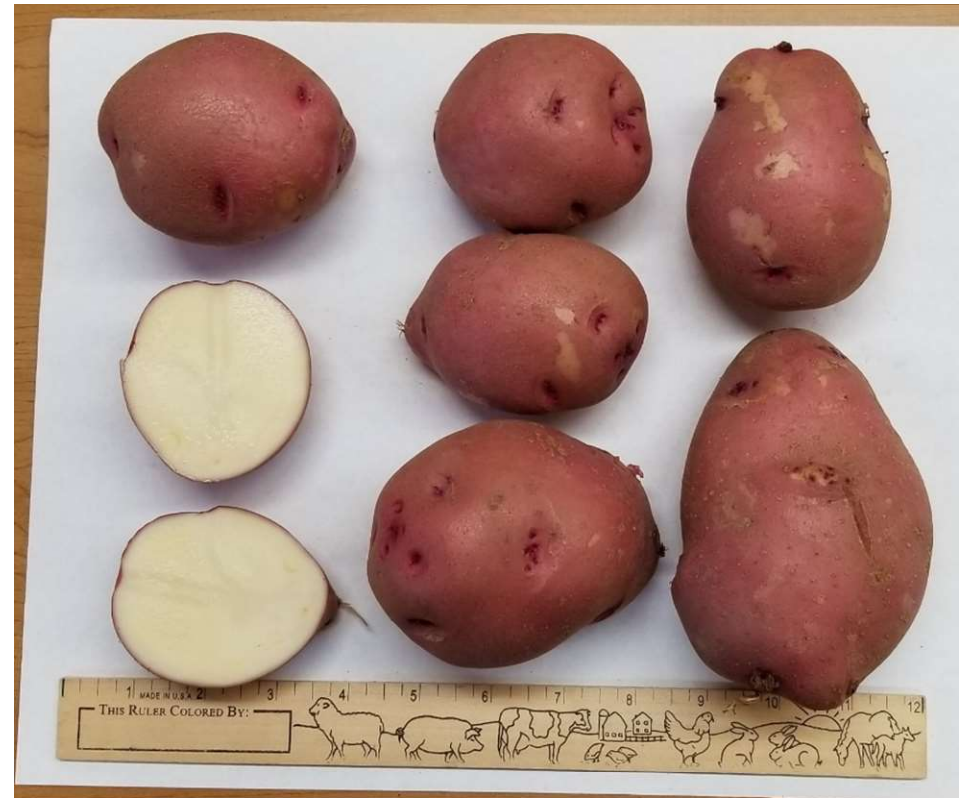
- University of Maine
- Red skin, white flesh
- Liked this variety in 2018 and 2019 as well
- Round, round shape that was very nice
- Shallow eyes
- Very few culls
- Good size and variety of sizes
- Lots of really big A's and B's also nice



	Yield of Marketable Tubers by Size Distribution (cwt.)			% of Marketable Yield by Size Distribution		
	Chef's (> 3")	#1 "A's" (> 2 1/2")	"B's" (< 2")	Chef's (%)	#1 "A's" (%)	"B's" (%)
Total Marketable Yield (Cwt)¹	26	99	4	20	77	3

NY118

- Cornell University
- Red skin, white flesh
- Nice light red skin
- Oblong to round shape
- Chef's and A's are round to slightly flattened, B's are round
- Lots of Chef's
- Overall yield is lighter but it sized up well



	Yield of Marketable Tubers by Size Distribution (cwt.)			% of Marketable Yield by Size Distribution		
	Chef's (> 3")	#1 "A's" (> 2 1/2")	"B's" (< 2")	Chef's (%)	#1 "A's" (%)	"B's" (%)
Total Marketable Yield (Cwt)¹	72	54	4	56	42	3

S51-1

- Cornell University
- Pink skin, white flesh
- Skinned extremely easily on the grading chains, serious issue
- Got pressure cracks from light handling
- Culls were all cracks – 31% of total harvest
- Oblong shape
- Mostly small A's with some B's



	Yield of Marketable Tubers by Size Distribution (cwt.)			% of Marketable Yield by Size Distribution		
	Chef's (> 3")	#1 "A's" (> 2 1/2")	"B's" (< 2")	Chef's (%)	#1 "A's" (%)	"B's" (%)
Total Marketable Yield (Cwt)¹	0	37	12	0	76	24

S74-2

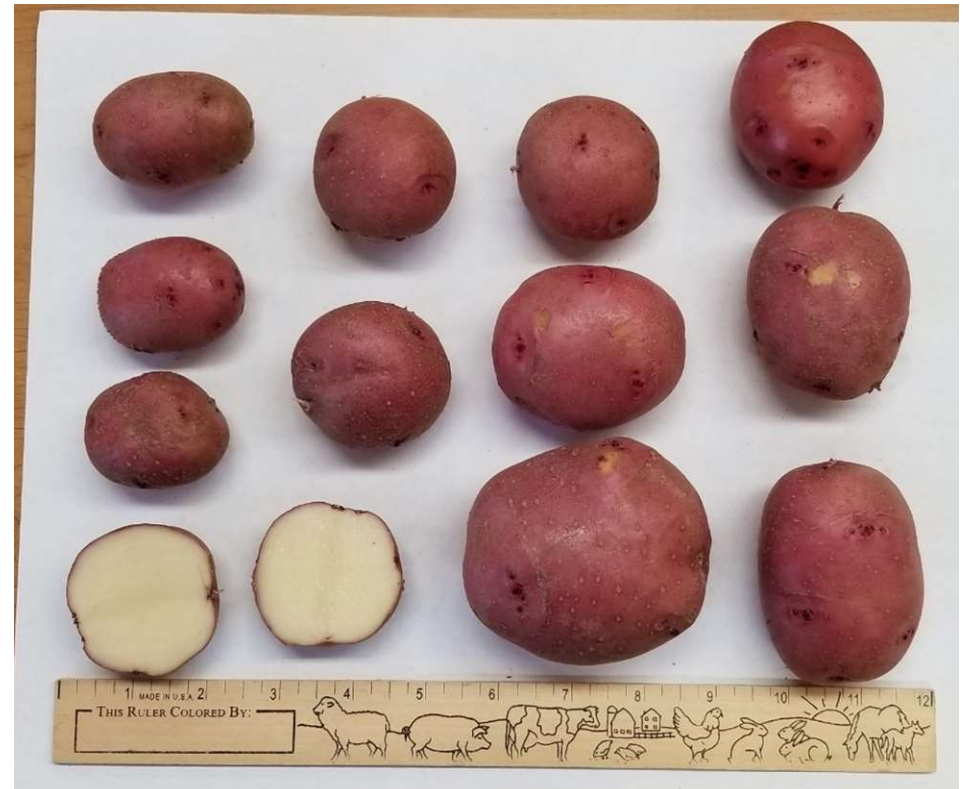
- Cornell University
- Red skin, white flesh
- Medium to dark red skin, very nice looking
- Small size, high setting type
- Nice, round shape
- Evenly split between A's and B's
- Nice looking



	Yield of Marketable Tubers by Size Distribution (cwt.)			% of Marketable Yield by Size Distribution		
	Chef's (> 3")	#1 "A's" (> 2 1/2")	"B's" (< 2")	Chef's (%)	#1 "A's" (%)	"B's" (%)
Total Marketable Yield (Cwt)¹	0	72	53	0	58	42

S77-1

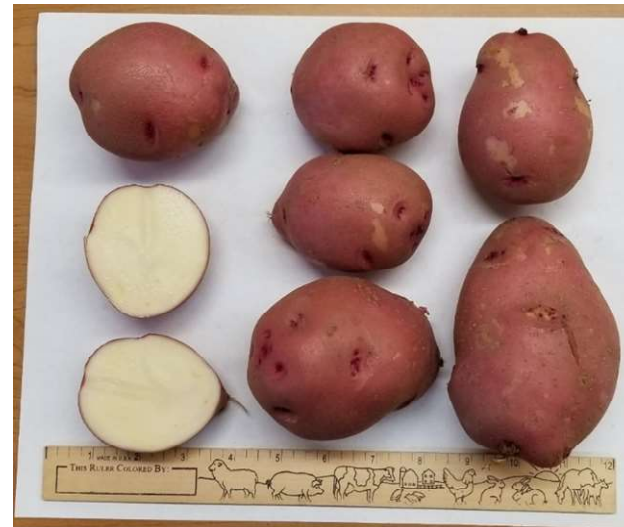
- Cornell University
- Red skin, white flesh
- Medium red skin, very nice color
- Shape is oblong to flat round
- Skin is thinner, some skinned by grader
- Small high setting B type, lots of small tubers
- A's were on the smaller side
- Very few culls



	Yield of Marketable Tubers by Size Distribution (cwt.)			% of Marketable Yield by Size Distribution		
	Chef's (> 3")	#1 "A's" (> 2 1/2")	"B's" (< 2")	Chef's (%)	#1 "A's" (%)	"B's" (%)
Total Marketable Yield (Cwt)¹	0	73	47	0	61	39



NADF113484B-1



NY118



S51-1



S74-2



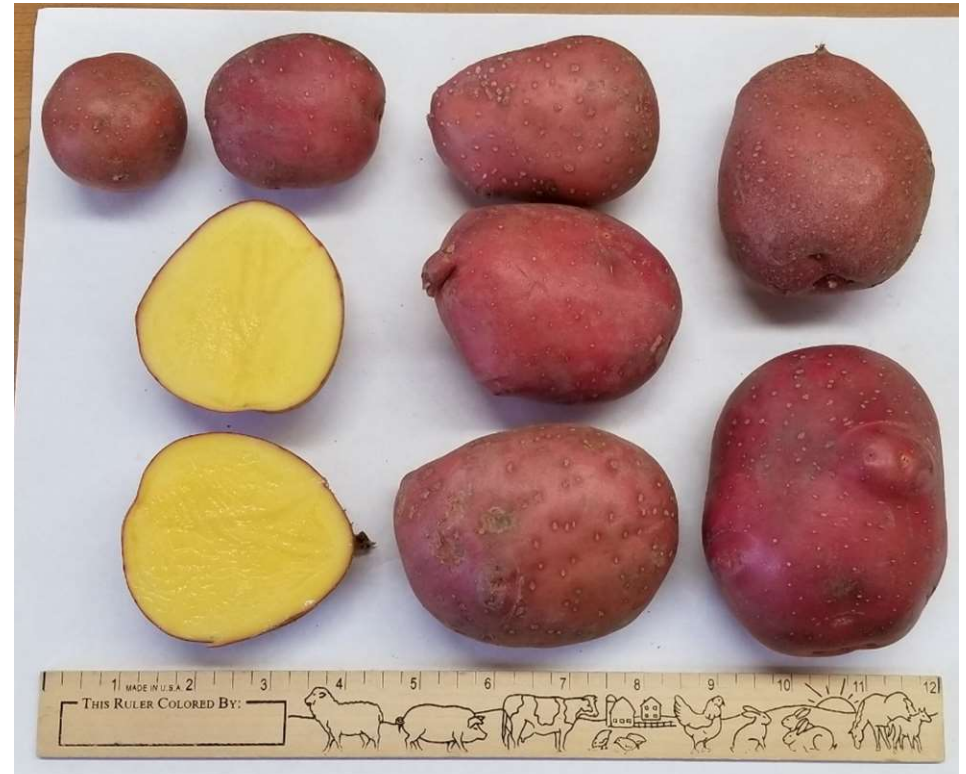
S77-1

Red Skin Yellow Flesh Lines



Baltic Rose

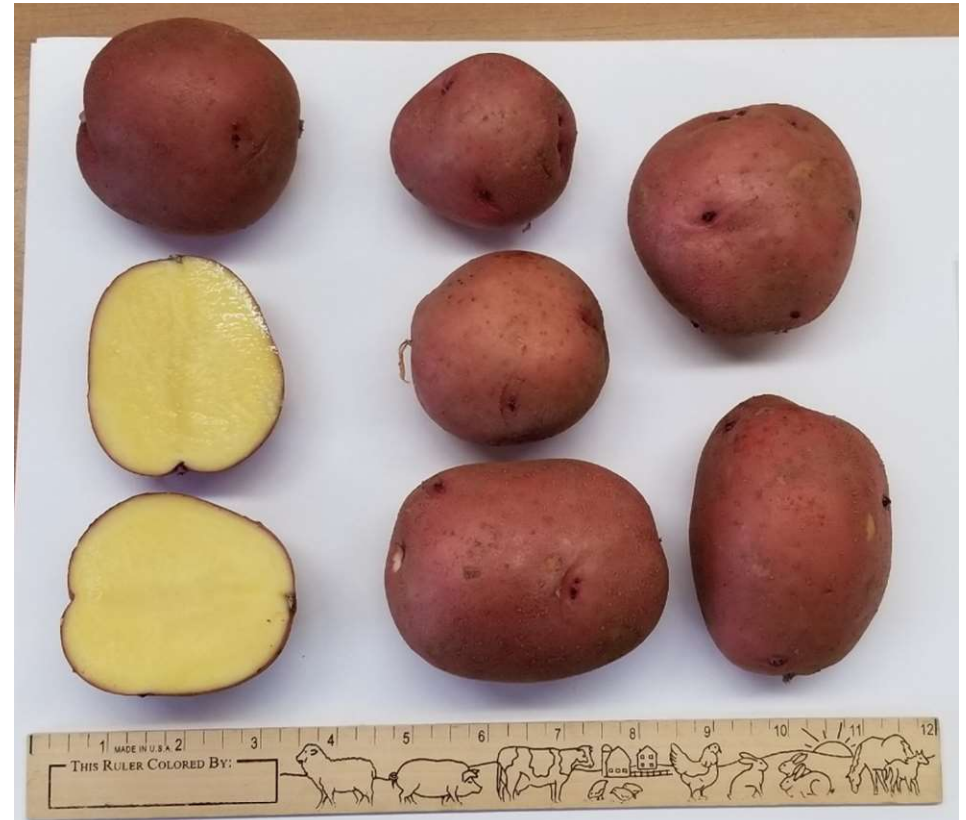
- Childstock Farm
- Red skin, dark yellow flesh
- Two skin colors present this year – light red and medium red
- Flat round to flat oblong shape
- A little texture to skin, has tiny white spots all over it
- Highest yielding but may have gotten supplemental water from bordering field
- Chef's showed some hollow heart, may be better to harvest as large A's
- Culls were knobs and misshapes, 36% of total yield and highest pounds of culls in the trial
- Tubers were sprouting when they were graded on 10/27
- Favorite tasting in 2019



	Yield of Marketable Tubers by Size Distribution (cwt.)			% of Marketable Yield by Size Distribution		
	Chef's (> 3")	#1 "A's" (> 2 1/2")	"B's" (< 2")	Chef's (%)	#1 "A's" (%)	"B's" (%)
Total Marketable Yield (Cwt)¹	70	166	15	28	66	6

MSAA161-4

- Michigan State University
- Red skin, yellow flesh
- Smooth skin
- Round, round shape with a few oblongs
- Very uniform
- Decent amount of chefs and lots of large A's
- Most culls were greeners
- Got a little skinned in grading



	Yield of Marketable Tubers by Size Distribution (cwt.)			% of Marketable Yield by Size Distribution		
	Chef's (> 3")	#1 "A's" (> 2 1/2")	"B's" (< 2")	Chef's (%)	#1 "A's" (%)	"B's" (%)
Total Marketable Yield (Cwt)¹	31	120	23	18	69	13

MSBB238-1

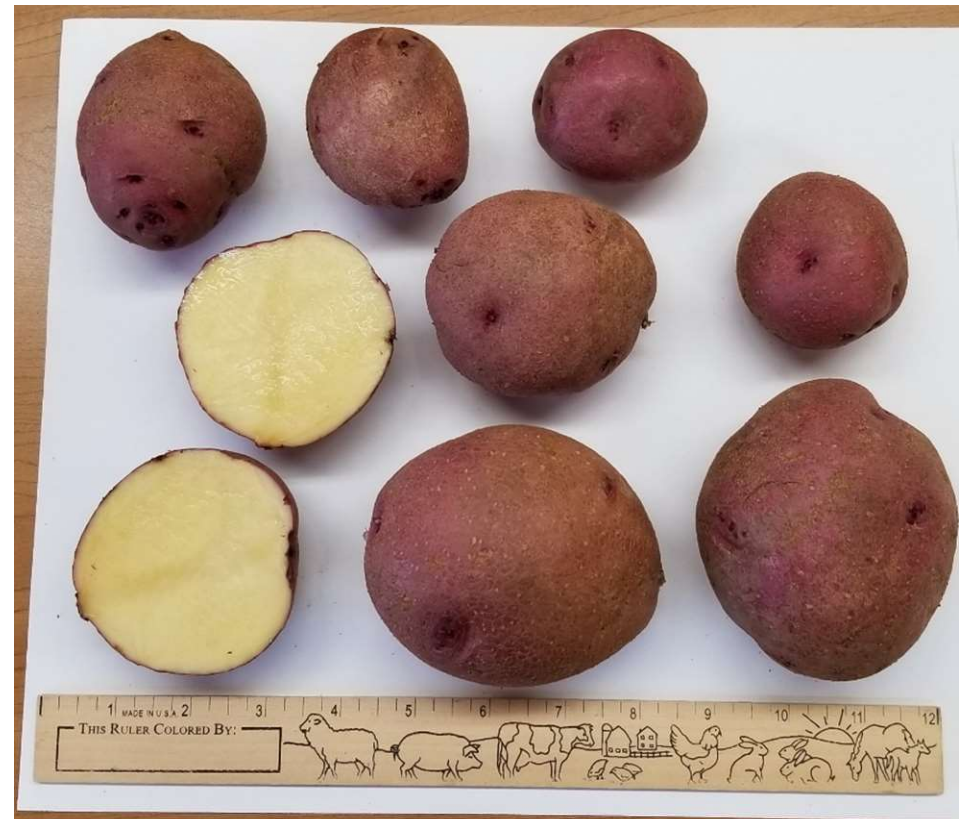
- Michigan State University
- Red skin, yellow flesh
- Muted red color, almost beige
- Inconsistent shape, some rounds, some oblongs, some pointed
- Lumpy shape even if not culls
- Wide range of size
- Second highest in culls and 23% of total yield was knobs and misshapes



	Yield of Marketable Tubers by Size Distribution (cwt.)			% of Marketable Yield by Size Distribution		
	Chef's (> 3")	#1 "A's" (> 2 1/2")	"B's" (< 2")	Chef's (%)	#1 "A's" (%)	"B's" (%)
Total Marketable Yield (Cwt)¹	49	117	33	24	59	17

MSZ416-08RY

- Michigan State University
- Red skin, light yellow flesh
- Medium dark red skin, skin texture mutes the color
- Round, round shape with a few oblongs
- Very uniform
- Decent amount of chefs and A's
- Overall, really nice



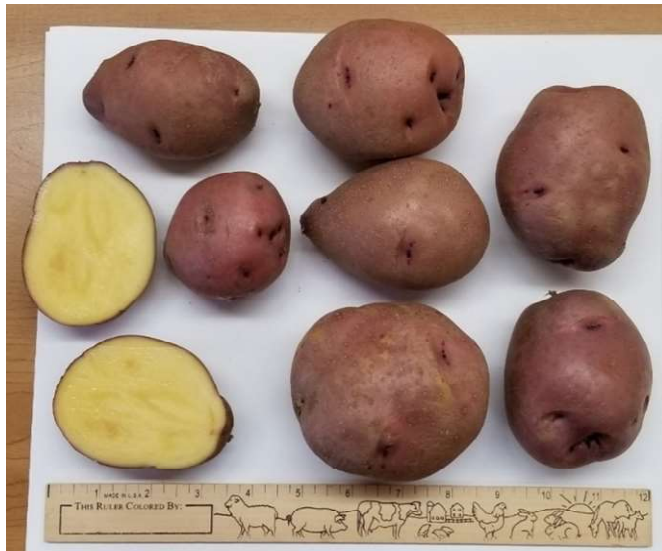
	Yield of Marketable Tubers by Size Distribution (cwt.)			% of Marketable Yield by Size Distribution		
	Chef's (> 3")	#1 "A's" (> 2 1/2")	"B's" (< 2")	Chef's (%)	#1 "A's" (%)	"B's" (%)
Total Marketable Yield (Cwt)¹	23	73	8	22	70	8



Baltic Rose



MSAA161-4



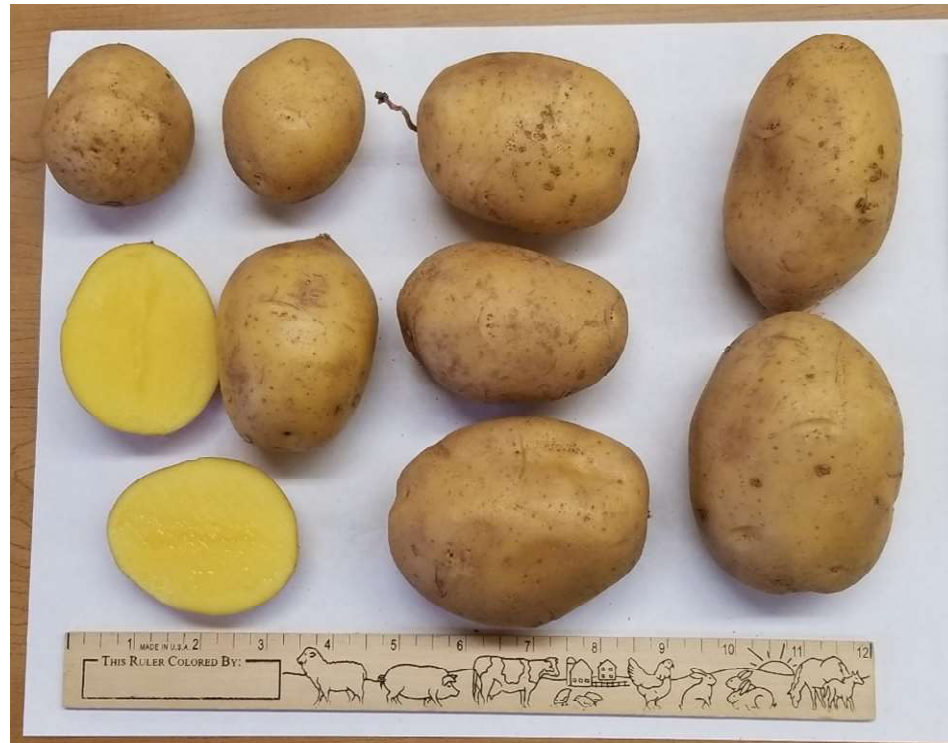
MSBB238-1



MSZ416-08RY

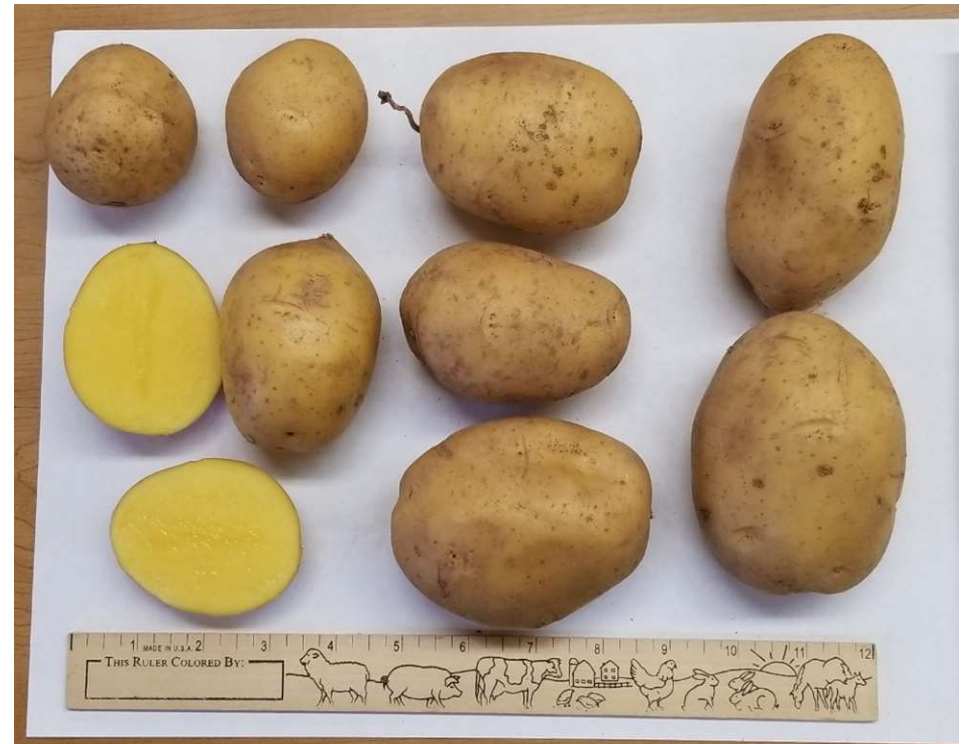
White Skin Yellow Flesh Lines

- Belmonda
- Golden Globe
- Maggie
- MSX156-1Y
- Natascha
- Paroli
- S40-1
- S43-1
- S48-1
- Tacoma
- Yukon Gold



Belmonda

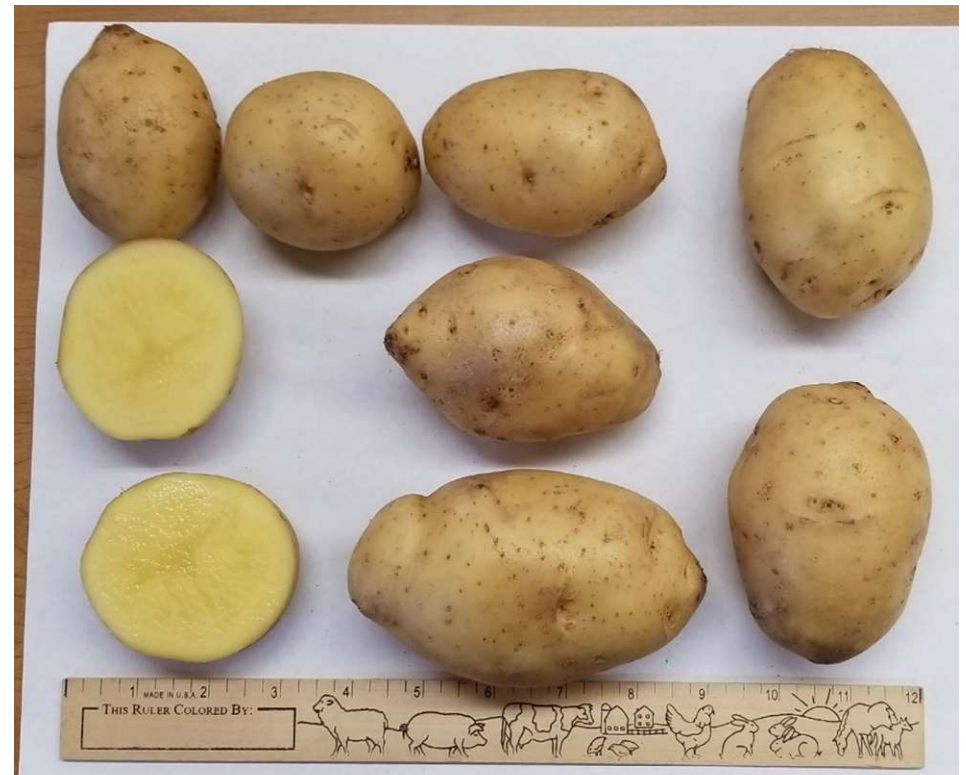
- Childstock Farm
- White skin, yellow flesh
- Skin is fairly smooth
- Oblong to oblong round shape
- Nice size and shape
- Few knobs or misshapes
- Good yield
- Overall a nice, consistent potato
- Highest yielding yellow flesh potato
- Good amount of nice looking Chef's and large A's
- Culls mostly greeners



Total Marketable Yield (Cwt) ¹	Yield of Marketable Tubers by Size Distribution (cwt.)			% of Marketable Yield by Size Distribution		
	Chef's (> 3")	#1 "A's" (> 2 1/2")	"B's" (< 2")	Chef's (%)	#1 "A's" (%)	"B's" (%)
193	65	116	12	34	60	6

Golden Globe

- Childstock Farm
- White skin, yellow flesh
- Skin is fairly smooth and bright white
- Oblong to oblong round shape
- Okay on size
- Culls were mostly knobs and misshapes



	Yield of Marketable Tubers by Size Distribution (cwt.)			% of Marketable Yield by Size Distribution		
	Chef's (> 3")	#1 "A's" (> 2 1/2")	"B's" (< 2")	Chef's (%)	#1 "A's" (%)	"B's" (%)
Total Marketable Yield (Cwt)¹	44	111	16	26	65	9

Maggie

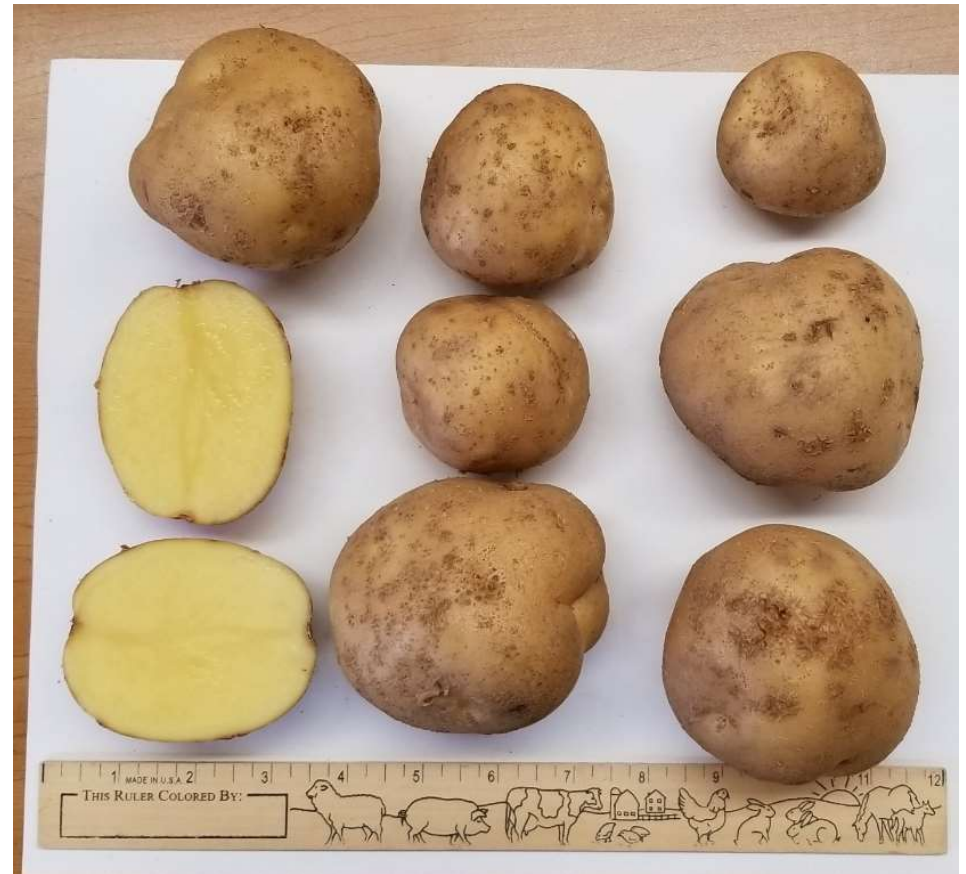
- Childstock Farm
- White skin, dark yellow flesh
- Skin is smooth and buff
- Round to slightly oblong shape, some pointed
- Smaller on average, few Chef's, nice A's and B's
- Culls were mostly greeners
- Skin and flesh look nice



	Yield of Marketable Tubers by Size Distribution (cwt.)			% of Marketable Yield by Size Distribution		
	Chef's (> 3")	#1 "A's" (> 2 1/2")	"B's" (< 2")	Chef's (%)	#1 "A's" (%)	"B's" (%)
Total Marketable Yield (Cwt)¹	18	132	30	10	74	16

MSX156-1Y

- Michigan State University
- White skin, pale yellow flesh
- Scurfy texture to skin
- Round, round shape
- A lot of scab in this variety
- Fourth in culls weight, 39% of total yield
- Culls were around half scab and half cracks
- Disappointing



	Yield of Marketable Tubers by Size Distribution (cwt.)			% of Marketable Yield by Size Distribution		
	Chef's (> 3")	#1 "A's" (> 2 1/2")	"B's" (< 2")	Chef's (%)	#1 "A's" (%)	"B's" (%)
Total Marketable Yield (Cwt)¹	21	51	4	27	68	5

Natascha

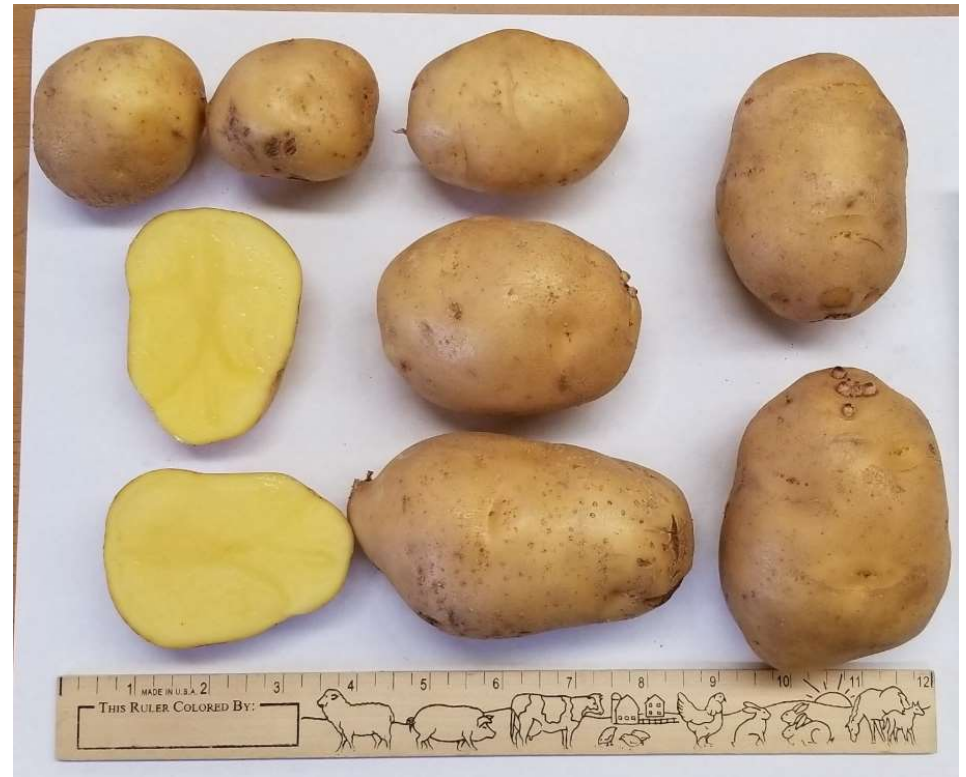
- Childstock Farm
- Bright white skin, dark yellow flesh
- Oblong to slightly round and flat shape, some points
- Skin is smooth
- Decent size, mostly good size A's, nice B's
- Culls are greeners and knobs
- Good yield, overall nice



	Yield of Marketable Tubers by Size Distribution (cwt.)			% of Marketable Yield by Size Distribution		
	Chef's (> 3")	#1 "A's" (> 2 1/2")	"B's" (< 2")	Chef's (%)	#1 "A's" (%)	"B's" (%)
Total Marketable Yield (Cwt)¹	24	118	38	13	66	21

Paroli

- Childstock Farm
- White skin, yellow flesh
- Smooth skin
- Oblong shape
- Good yield
- Decent amount of culls, 18% of total yield, half cracks and half knobs and misshapes



	Yield of Marketable Tubers by Size Distribution (cwt.)			% of Marketable Yield by Size Distribution		
	Chef's (> 3")	#1 "A's" (> 2 1/2")	"B's" (< 2")	Chef's (%)	#1 "A's" (%)	"B's" (%)
Total Marketable Yield (Cwt)¹	53	108	7	31	64	4

S40-1

- Cornell University
- White skin, light yellow flesh
- Muted skin color due to texture
- Smaller size overall
- Very uniform
- Very round size
- A's are a decent size but a lot of B's
- Culls are mostly cracks



Total Marketable Yield (Cwt) ¹	Yield of Marketable Tubers by Size Distribution (cwt.)			% of Marketable Yield by Size Distribution		
	Chef's (> 3")	#1 "A's" (> 2 1/2")	"B's" (< 2")	Chef's (%)	#1 "A's" (%)	"B's" (%)
92	3	74	15	3	80	17

S43-1

- Cornell University
- Blush white skin, slight orange tint, yellow flesh
- Pink eyes
- Shape is extremely inconsistent, rounds, oblongs, fingerlings, pointed
- On the smaller side, with the oblong A's falling into the B basket
- Few culls, mostly knobs



	Yield of Marketable Tubers by Size Distribution (cwt.)			% of Marketable Yield by Size Distribution		
	Chef's (> 3")	#1 "A's" (> 2 1/2")	"B's" (< 2")	Chef's (%)	#1 "A's" (%)	"B's" (%)
Total Marketable Yield (Cwt)¹	0	116	41	0	74	26

S48-1

- Cornell University
- White skin, yellow flesh
- Skin is smooth, beige but bright
- Round shape with a few points
- Overall nice looking
- Primarily A's
- Lower yielding
- Few culls, some scab, some cracks



	Yield of Marketable Tubers by Size Distribution (cwt.)			% of Marketable Yield by Size Distribution		
	Chef's (> 3")	#1 "A's" (> 2 1/2")	"B's" (< 2")	Chef's (%)	#1 "A's" (%)	"B's" (%)
Total Marketable Yield (Cwt)¹	2	76	4	2	93	5

Tacoma

- Childstock Farm
- White skin, yellow flesh
- Oblong and flat, some rounder shape
- Bright yellow skin
- Raised eyes, makes for a lumpy potato
- Decent size
- Had the most culls in the trial
- 36% of total yield was culls, mostly misshapes and knobs but also greener



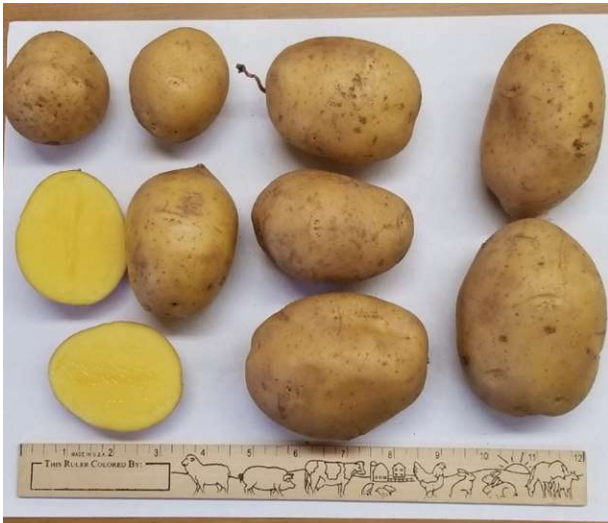
Total Marketable Yield (Cwt) ¹	Yield of Marketable Tubers by Size Distribution (cwt.)			% of Marketable Yield by Size Distribution		
	Chef's (> 3")	#1 "A's" (> 2 1/2")	"B's" (< 2")	Chef's (%)	#1 "A's" (%)	"B's" (%)
111	21	66	23	19	60	21

Yukon Gold

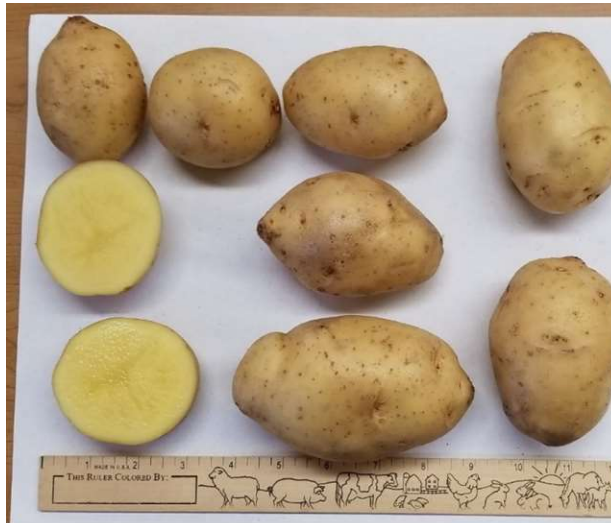
- Cornell University
- White skin, yellow flesh
- Skin had a lot of texture which muted the color
- Mostly round with some slightly flattened and oblong
- Good size, decent amount of Chef's and large A's
- Few culls, cracks and misshapes



	Yield of Marketable Tubers by Size Distribution (cwt.)			% of Marketable Yield by Size Distribution		
	Chef's (> 3")	#1 "A's" (> 2 1/2")	"B's" (< 2")	Chef's (%)	#1 "A's" (%)	"B's" (%)
Total Marketable Yield (Cwt)¹	51	85	5	36	60	3



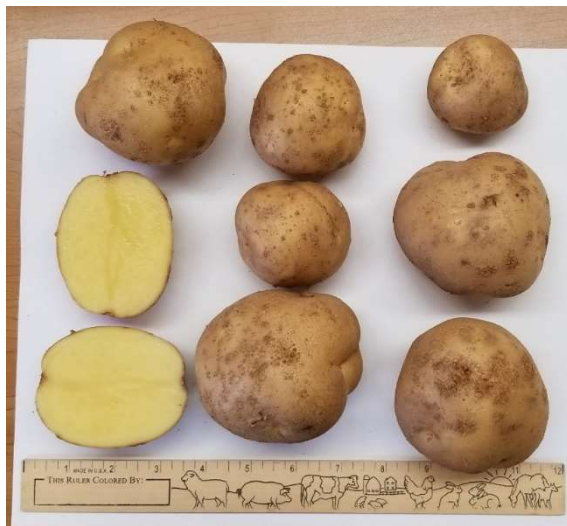
Belmonda



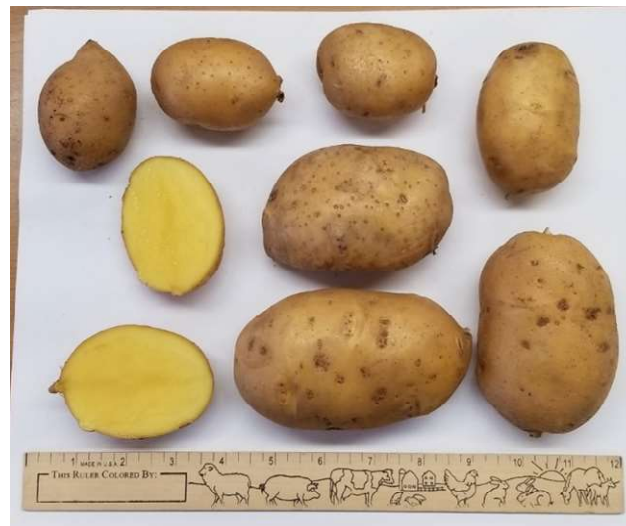
Golden Globe



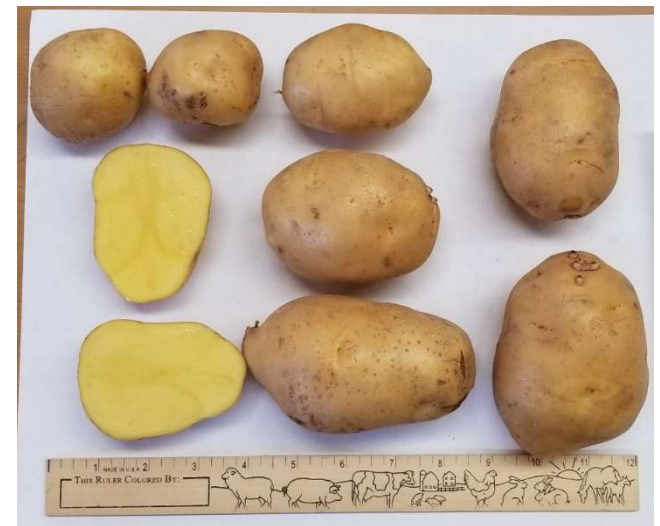
Maggie



MSX156-1Y



Natascha



Paroli



S40-1



S43-1



S48-1



Tacoma



Yukon Gold

Purple Skin Purple Flesh Lines

- AF5412-3
- Blackberry
- MSZ108-08
- S47-2
- S47-3
- S47-5



AF5412-3

- University of Maine
- Dark purple skin, variable purple flesh
- Oblong shape similar to a russet, some points and lumps
- Some weird shapes present
- Sized up well, a lot of Chef's and large A's
- Decent amount of culls that were all misshapes, around 10% of yield



Total Marketable Yield (Cwt) ¹	Yield of Marketable Tubers by Size Distribution (cwt.)			% of Marketable Yield by Size Distribution		
	Chef's (> 3")	#1 "A's" (> 2 1/2")	"B's" (< 2")	Chef's (%)	#1 "A's" (%)	"B's" (%)
182	90	83	10	49	45	5

Blackberry

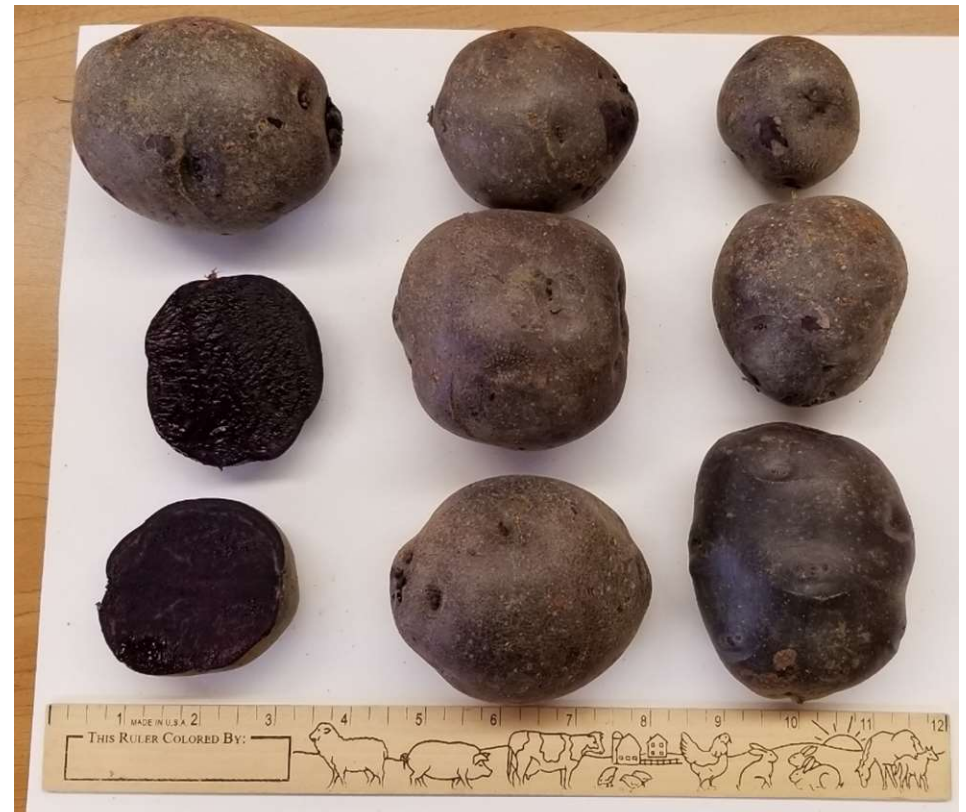
- Michigan State University
- Dark purple skin, extremely dark purple flesh
- Round shape with a few pointed
- High setting type
- Bigger tubers than in previous years, more A's but still a lot of B's
- Few culls, a little scab and a few misshapes



	Yield of Marketable Tubers by Size Distribution (cwt.)			% of Marketable Yield by Size Distribution		
	Chef's (> 3")	#1 "A's" (> 2 1/2")	"B's" (< 2")	Chef's (%)	#1 "A's" (%)	"B's" (%)
Total Marketable Yield (Cwt)¹	0	83	51	0	62	38

MSZ108-08

- Michigan State University
- Dark purple skin, extremely dark purple flesh
- Skin is mostly smooth with a little texture
- Mostly round shape with some slightly oblong
- Very uniform in shape and size
- Few Chef's but good amount of A's
- Some deep eyes, some smooth



	Yield of Marketable Tubers by Size Distribution (cwt.)			% of Marketable Yield by Size Distribution		
	Chef's (> 3")	#1 "A's" (> 2 1/2")	"B's" (< 2")	Chef's (%)	#1 "A's" (%)	"B's" (%)
Total Marketable Yield (Cwt)¹	6	79	21	6	74	20

S47-2

- Cornell University
- Dark purple skin, extremely dark purple flesh
- Fingerling type, oblong and teardrop shapes
- Smaller A's fall through the grading chain to B's
- Smaller overall, mostly B's
- Few culls



	Yield of Marketable Tubers by Size Distribution (cwt.)			% of Marketable Yield by Size Distribution		
	Chef's (> 3")	#1 "A's" (> 2 1/2")	"B's" (< 2")	Chef's (%)	#1 "A's" (%)	"B's" (%)
Total Marketable Yield (Cwt)¹	0	18	65	0	22	78

S47-3

- Cornell University
- Purple skin, white and purple starburst flesh
- Skin texture mutes the color
- Oblong shape, similar to Adirondack Purple
- Larger A's are oblong and round. B's are round spheres
- A lot of small tubers
- Few culls, mostly misshapes



	Yield of Marketable Tubers by Size Distribution (cwt.)			% of Marketable Yield by Size Distribution		
	Chef's (> 3")	#1 "A's" (> 2 1/2")	"B's" (< 2")	Chef's (%)	#1 "A's" (%)	"B's" (%)
Total Marketable Yield (Cwt)¹	1	82	53	1	60	39

S47-5

- Cornell University
- Purple skin, purple flesh
- Skin texture mutes color
- Low yielding
- Mostly B's and small A's
- Lots of culls, 40% of total yield was knobs and misshapes



Total Marketable Yield (Cwt) ¹	Yield of Marketable Tubers by Size Distribution (cwt.)			% of Marketable Yield by Size Distribution		
	Chef's (> 3")	#1 "A's" (> 2 1/2")	"B's" (< 2")	Chef's (%)	#1 "A's" (%)	"B's" (%)
33	0	14	20	0	41	59



AF5412-3



Blackberry



MSZ108-08



S47-2



S47-3



S47-5

Specialty Lines

- AF5414-1
- MSAA101-1
- MSAA157-2
- MSZ413-6P



AF5414-1

- University of Maine
- Dark red skin, rose red/purple flesh
- Highest marketable yield in both 2018 and 2019, we like 2020 yields even if not highest yielding
- Mostly oblong shape, some flat some round
- Skin is fairly smooth
- Can be a little a little lumpy but not a major issue
- Good size range, Chef's are very large and A's are also nice
- One of the best tasting in 2018 and 2019
- Few culls, some greeners and some misshapes



Total Marketable Yield (Cwt) ¹	Yield of Marketable Tubers by Size Distribution (cwt.)			% of Marketable Yield by Size Distribution		
	Chef's (> 3")	#1 "A's" (> 2 1/2")	"B's" (< 2")	Chef's (%)	#1 "A's" (%)	"B's" (%)
153	37	97	19	24	64	12

MSAA101-1

- Michigan State University
- Dark red skin, pink flesh
- Variable shape, some round, some oblong, especially larger tubers
- Skin is really nice color
- Eyes are fairly deep
- Good size
- Few culls, mostly cracks



	Yield of Marketable Tubers by Size Distribution (cwt.)			% of Marketable Yield by Size Distribution		
	Chef's (> 3")	#1 "A's" (> 2 1/2")	"B's" (< 2")	Chef's (%)	#1 "A's" (%)	"B's" (%)
Total Marketable Yield (Cwt)¹	22	106	9	16	78	6

MSAA157-2

- Michigan State University
- Purple skin, yellow flesh
- Round, flat shape
- Very consistent shape and size
- Third highest cull weight, 31% of total yield
- All culls were deep scab and a big issue for this variety



Total Marketable Yield (Cwt) ¹	Yield of Marketable Tubers by Size Distribution (cwt.)			% of Marketable Yield by Size Distribution		
	Chef's (> 3")	#1 "A's" (> 2 1/2")	"B's" (< 2")	Chef's (%)	#1 "A's" (%)	"B's" (%)
127	37	79	12	29	62	9

MSZ413-6P

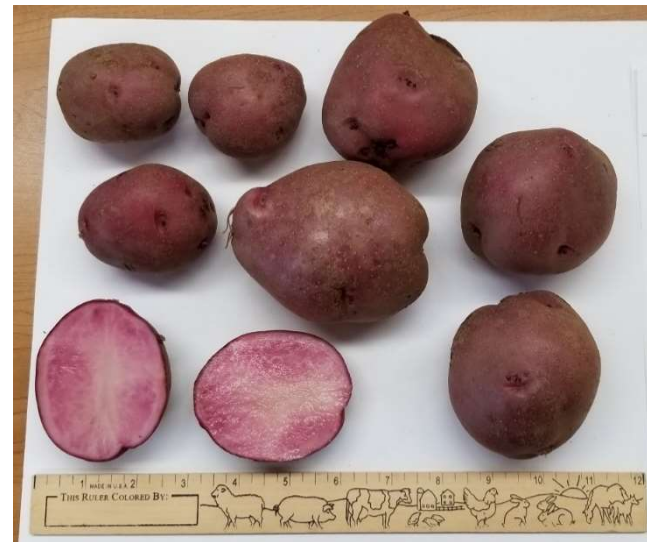
- Michigan State University
- Purple skin, white flesh
- Nice color
- Skinned a bit on the grading chain
- Round and flat shape, some slightly oblong
- Good yielding, nice size range
- Very few culls



	Yield of Marketable Tubers by Size Distribution (cwt.)			% of Marketable Yield by Size Distribution		
	Chef's (> 3")	#1 "A's" (> 2 1/2")	"B's" (< 2")	Chef's (%)	#1 "A's" (%)	"B's" (%)
Total Marketable Yield (Cwt)¹	22	114	8	15	79	6



AF5414-1



MSAA101-1



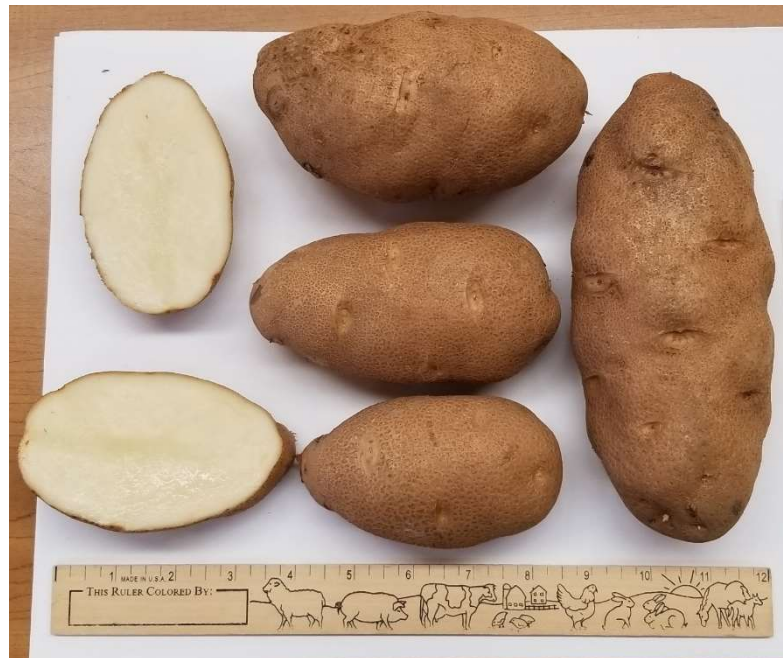
MSAA157-2



MSZ413-6P

Russets

- AF3362-1 (Caribou Russet)



AF3362-1

- Trade name is Caribou Russet
- University of Maine
- Oblong, round russet shape
- In 2018, had some issues with misshapes and internal issues but did well in 2019 and 2020
- Lots of chefs, large A's and large B's, consistent and nice
- Culls were mostly misshapes
- Overall nice



	Yield of Marketable Tubers by Size Distribution (cwt.)			% of Marketable Yield by Size Distribution		
	Chef's (> 3")	#1 "A's" (> 2 1/2")	"B's" (< 2")	Chef's (%)	#1 "A's" (%)	"B's" (%)
Total Marketable Yield (Cwt)¹	66	42	5	59	37	4

Thank you to our farm collaborator Samascott Orchards

And thank you to our seed suppliers:

Ralph Child, Childstock Farms, Inc.

Dr. Greg Porter, University of Maine Potato Breeding Program

Dr. Walter De Jong, Cornell University Potato Breeding Program

Dr. David Douches, Michigan State University Potato Breeding Program

The Eastern New York Commercial Horticulture Program is a Cornell Cooperative Extension Partnership between Cornell University and the CCE Associations in the 17 Eastern New York counties.



Table 1: Summary of Varieties in Trial

Variety	Source	Skin/Flesh	Total Marketable Yield (Cwt)
Baltic Rose	Childstock Farm	Red/Yellow	251
Q112-5	Cornell University	White/White	200
MSBB238-1	Michigan State University	Red/Yellow	199
Belmonda	Childstock Farm	White/Yellow	193
AF5412-3	University of Maine	Purple/Purple	182
Natascha	Childstock Farm	White/Yellow	179
Maggie	Childstock Farm	White/Yellow	179
MSAA161-4	Michigan State University	Red/Yellow	174
Golden Globe	Childstock Farm	White/Yellow	172
Paroli	Childstock Farm	White/Yellow	169
S43-1	Cornell University	White to Pink/Yellow	157
AF5414-1	University of Maine	Red/Pink	153
NY171	Cornell University	White with Purple Splotch/White	146
MSZ413-6P	Michigan State University	Purple/White	144
Yukon Gold	Cornell University	White/Yellow	141
NADF102629C-4	University of Maine	White/White	138
MSAA101-1	Michigan State University	Red/Pink	136
S47-3	Cornell University	Purple/Purple Starburst	135
Blackberry	Michigan State University	Purple/Purple	134
NY118	Cornell University	Red/White	130
NADF113484B-1	University of Maine	Red/White	130
MSAA157-2	Michigan State University	Purple/Yellow	127
S74-2	Cornell University	Red/White	124
S77-1	Cornell University	Red/White	120
AF3362-1	University of Maine	Russet	112
Tacoma	Childstock Farm	White/Yellow	111
MSZ108-08	Michigan State University	Purple/Purple	106
MSZ416-08RY	Michigan State University	Red/Light Yellow	104
S40-1	Cornell University	White/Yellow	92
S47-2	Cornell University	Purple/Purple	83
S48-1	Cornell University	White/Yellow	82
MSX156-1Y	Michigan State University	White/Yellow	75
S51-1	Cornell University	Pink/White	49
S47-5	Cornell University	Purple/Purple	33

Table 2: Yield and Distribution of Yield by Size (Highest to Lowest Yield)

Variety	Skin/Flesh	Total Marketable Yield (Cwt)	Yield of Marketable Tubers by Size Distribution (Cwt)			Yield of Marketable Tubers by Size Distribution (50 lb bags)			% of Marketable Yield by Size Distribution		
			Chef's (> 3")	#1 "A's" (> 2 1/2")	"B's" (< 2")	Chef's (> 3")	#1 "A's" (> 2 1/2")	"B's" (< 2")	Chef's (%)	#1 "A's" (%)	"B's" (%)
Baltic Rose	Red/Yellow	251	70	166	15	140	331	30	28	66	6
Q112-5	White/White	200	54	138	8	108	275	15	27	69	4
MSBB238-1	Red/Yellow	199	49	117	33	98	234	67	24	59	17
Belmonda	White/Yellow	193	65	116	12	130	233	24	34	60	6
AF5412-3	Purple/Purple	182	90	83	10	180	165	19	49	45	5
Natascha	White/Yellow	179	24	118	38	47	235	76	13	66	21
Maggie	White/Yellow	179	18	132	30	35	264	59	10	74	16
MSAA161-4	Red/Yellow	174	31	120	23	63	239	46	18	69	13
Golden Globe	White/Yellow	172	44	111	16	88	223	32	26	65	9
Paroli	White/Yellow	169	53	108	7	106	216	15	31	64	4
S43-1	White to Pink/Yellow	157	0	116	41	0	233	81	0	74	26
AF5414-1	Red/Pink	153	37	97	19	74	195	38	24	64	12
NY171	White with Purple Splotch/White	146	42	88	16	85	175	32	29	60	11
MSZ413-6P	Purple/White	144	22	114	8	43	227	17	15	79	6
Yukon Gold	White/Yellow	141	51	85	5	102	170	10	36	60	3
NADF102629C-4	White/White	138	46	87	5	92	173	10	33	63	4
MSAA101-1	Red/Pink	136	22	106	9	44	211	17	16	78	6
S47-3	Purple/Purple Starburst	135	1	82	53	1	163	105	1	60	39
Blackberry	Purple/Purple	134	0	83	51	0	166	103	0	62	38
NY118	Red/White	130	72	54	4	145	109	7	56	42	3
NADF113484B-1	Red/White	130	26	99	4	53	199	8	20	77	3
MSAA157-2	Purple/Yellow	127	37	79	12	73	157	24	29	62	9
S74-2	Red/White	124	0	72	53	0	143	105	0	58	42
S77-1	Red/White	120	0	73	47	0	146	94	0	61	39
AF3362-1	Russet	112	66	42	5	133	83	9	59	37	4
Tacoma	White/Yellow	111	21	66	23	43	132	46	19	60	21
MSZ108-08	Purple/Purple	106	6	79	21	12	157	42	6	74	20
MSZ416-08RY	Red/Light Yellow	104	23	73	8	45	147	16	22	70	8

See next page for the rest of the varieties

Table 2 Con't: Yield and Distribution of Yield by Size (Highest to Lowest Yield)

Variety	Skin/Flesh	Total Marketable Yield (Cwt)	Yield of Marketable Tubers by Size Distribution (Cwt)			Yield of Marketable Tubers by Size Distribution (50 lb bags)			% of Marketable Yield by Size Distribution		
			Chef's (> 3")	#1 "A's" (> 2 1/2")	"B's" (< 2")	Chef's (> 3")	#1 "A's" (> 2 1/2")	"B's" (< 2")	Chef's (%)	#1 "A's" (%)	"B's" (%)
S40-1	White/Yellow	92	3	74	15	6	148	30	3	80	17
S47-2	Purple/Purple	83	0	18	65	0	36	130	0	22	78
S48-1	White/Yellow	82	2	76	4	3	152	9	2	93	5
MSX156-1Y	White/Yellow	75	21	51	4	41	102	7	27	68	5
S51-1	Pink/White	49	0	37	12	0	74	23	0	76	24
S47-5	Purple/Purple	33	0	14	20	0	28	39	0	41	59

Cornell Cooperative Extension | Eastern NY Commercial Horticulture Program

Table 3: Yield and Distribution of Yield Sorted by Type of Potato

Variety	Skin/Flesh	Total Marketable Yield (Cwt)	Yield of Marketable Tubers by Size Distribution (Cwt)			Yield of Marketable Tubers by Size Distribution (50 lb bags)			% of Marketable Yield by Size Distribution		
			Chef's (> 3")	#1 "A's" (> 2 1/2")	"B's" (< 2")	Chef's (> 3")	#1 "A's" (> 2 1/2")	"B's" (< 2")	Chef's (%)	#1 "A's" (%)	"B's" (%)
Purple Skin/Purple Flesh											
AF5412-3	Purple/Purple	182	90	83	10	180	165	19	49	45	5
S47-3	Purple/Purple Starburst	135	1	82	53	1	163	105	1	60	39
Blackberry	Purple/Purple	134	0	83	51	0	166	103	0	62	38
MSZ108-08	Purple/Purple	106	6	79	21	12	157	42	6	74	20
S47-2	Purple/Purple	83	0	18	65	0	36	130	0	22	78
S47-5	Purple/Purple	33	0	14	20	0	28	39	0	41	59
Specialty											
AF5414-1	Red/Pink	153	37	97	19	74	195	38	24	64	12
MSZ413-6P	Purple/White	144	22	114	8	43	227	17	15	79	6
MSAA101-1	Red/Pink	136	22	106	9	44	211	17	16	78	6
MSAA157-2	Purple/Yellow	127	37	79	12	73	157	24	29	62	9
Red Skin/White Flesh											
NY118	Red/White	130	72	54	4	145	109	7	56	42	3
NADF113484B-1	Red/White	130	26	99	4	53	199	8	20	77	3
S74-2	Red/White	124	0	72	53	0	143	105	0	58	42
S77-1	Red/White	120	0	73	47	0	146	94	0	61	39
S51-1	Pink/White	49	0	37	12	0	74	23	0	76	24
Red Skin/Yellow Flesh											
Baltic Rose	Red/Yellow	251	70	166	15	140	331	30	28	66	6
MSBB238-1	Red/Yellow	199	49	117	33	98	234	67	24	59	17
MSAA161-4	Red/Yellow	174	31	120	23	63	239	46	18	69	13
MSZ416-08RY	Red/Light Yellow	104	23	73	8	45	147	16	22	70	8
Russet											
AF3362-1	Russet	112	66	42	5	133	83	9	59	37	4

See next page for the rest of the varieties

Table 3 Con't: Yield and Distribution of Yield Sorted by Type of Potato

Variety	Skin/Flesh	Total Marketable Yield (Cwt)	Yield of Marketable Tubers by Size Distribution (Cwt)			Yield of Marketable Tubers by Size Distribution (50 lb bags)			% of Marketable Yield by Size Distribution		
			Chef's (> 3")	#1 "A's" (> 2 1/2")	"B's" (< 2")	Chef's (> 3")	#1 "A's" (> 2 1/2")	"B's" (< 2")	Chef's (%)	#1 "A's" (%)	"B's" (%)
White Skin/White Flesh											
Q112-5	White/White	200	54	138	8	108	275	15	27	69	4
NY171	White with Purple Splotch/White	146	42	88	16	85	175	32	29	60	11
NADF102629C-4	White/White	138	46	87	5	92	173	10	33	63	4
White Skin/Yellow Flesh											
Belmonda	White/Yellow	193	65	116	12	130	233	24	34	60	6
Natascha	White/Yellow	179	24	118	38	47	235	76	13	66	21
Maggie	White/Yellow	179	18	132	30	35	264	59	10	74	16
Golden Globe	White/Yellow	172	44	111	16	88	223	32	26	65	9
Paroli	White/Yellow	169	53	108	7	106	216	15	31	64	4
S43-1	White to Pink/Yellow	157	0	116	41	0	233	81	0	74	26
Yukon Gold	White/Yellow	141	51	85	5	102	170	10	36	60	3
Tacoma	White/Yellow	111	21	66	23	43	132	46	19	60	21
S40-1	White/Yellow	92	3	74	15	6	148	30	3	80	17
S48-1	White/Yellow	82	2	76	4	3	152	9	2	93	5
MSX156-1Y	White/Yellow	75	21	51	4	41	102	7	27	68	5

Table 4: Cull Information and Distribution (Highest to Lowest Cull Weight)

Variety	Total Marketable Yield (Cwt)	Cull Total (cwt)	Cull Distribution				Cull % of Total Yield
			Green (cwt)	Scab (cwt)	Cracks (cwt)	Mishapes /knobs (cwt)	
Tacoma	111	63.4	16.5	2.7	12.5	31.7	36%
MSBB238-1	199	59.7	22.2	4.1	3.5	29.9	23%
MSAA157-2	127	57.6	0	57.6	0	0	31%
MSX156-1Y	75	47	2	26.5	18.5	0	39%
Paroli	169	38	7.6	0	16.7	13.7	18%
Baltic Rose	251	31.5	0	0	0	31.5	11%
Golden Globe	172	27.6	4.1	5.5	0	18	14%
S51-1	49	22.3	0	0	22.3	0	31%
S47-5	33	22.3	0	0	0	22.3	40%
AF5412-3	182	20.5	0.7	0	0	19.8	10%
NADF102629C-4	138	17.9	4.4	1.1	11.5	0.9	11%
AF3362-1	112	16.6	1.2	5.2	1.5	8.7	13%
Belmonda	193	14.5	9.6	2.7	0	2.2	7%
Natascha	179	11.6	6.5	0	0	5.1	6%
S47-3	135	10.9	3	1.4	0.5	6	7%
Q112-5	200	10.5	3.9	0	5.7	0.9	5%
S48-1	82	9.6	1	4.9	3.7	0	10%
S43-1	157	9.6	1.6	1.2	0.7	6.1	6%
S40-1	92	9.3	1.1	0.8	5.8	1.6	9%
MSZ416-08RY	104	8.2	2.5	0.8	3.3	1.6	7%
MSAA161-4	174	7.3	4.2	0	1.6	1.5	4%
Blackberry	134	6.6	0.4	3	0.7	2.5	5%
AF5414-1	153	6.5	3	0	0	3.5	4%
Yukon Gold	141	6.2	0	0	3.5	2.7	4%
Maggie	179	5.4	4.3	0	0	1.1	3%
S74-2	124	5.1	0.8	4	0	0.3	4%
MSZ108-08	106	4	0	0	0.9	3.1	4%
NY171	146	3.8	2	0	0	1.8	3%
MSAA101-1	136	3.8	0	0	3.3	0.5	3%
NADF113484B-1	130	3.7	2.1	0	1	0.6	3%
NY118	130	2.9	0	0	2.1	0.8	2%
S47-2	83	2	0	0	0	2	2%
MSZ413-6P	144	1	0	0.3	0	0.7	1%
S77-1	120	0	0	0	0	0	0%

Table 5: Comments on Varieties

Variety	Comments
AF3362-1	Russet. Large, oblong. Very nice, uniform. A few knobs. Perfect russet skin. No alligator skin
AF5412-3	Oblong shape similar to russet. Good size. Weird shapes present. Good yielding. Large sizes. Starburst white and purple interior, very pretty.
AF5414-1	Some knobs, some misshapes. Good size. Red skin, pink flesh. Chefs are very large. Mostly oblong shape, somewhat flat, a few rounds in there. Still like it in the third year even if not as high yielding as past years.
Baltic Rose	Pale red skin. Some knobs and misshapes. Were sprouting when graded on 10/27. Flat, oblong to round flat shape. A lot of misshapes especially the chefs. Smooth skin. Chefs appear to have hollow heart issues. Also appears to have two different skin colors
Belmonda	Good yield. Looks nice. Skin is yellowish and nice looking. Oblong shape. Good size. Few misshapes or knobs. Smooth skin. A tiny bit of scab. Overall very nice
Blackberry	Round shape. A few misshapes. Bigger than previous year, more A's. Dark, dark purple skin
Golden Globe	Nice looking. Oblong to round. Bright white skin. Okay size. A few knobs and misshapes.
Maggie	White skin. Smooth looking, buff skin. Some greeners. Slightly oblong to round shape. Average eyes. Smaller variety on average, few chefs, nice A's and B's. Some knobs
MSAA101-1	Dark red skin. Variable shape, mostly round flat to slightly oblong, especially on the bigger ones. Skin is a beautiful color. Eyes are fairly deep. Nice overall
MSAA157-2	A ton of really deep scab. Purple skin, nice color. Flat, round shape, very consistent. Flesh is yellow-white.
MSAA161-4	Red skin. Fairly round, slightly oblong. Nice looking. Few culls. Slight yellow flesh.
MSBB238-1	Red skin, white flesh. Muted red color. Almost purple eye. Some knobs. Good yield. Lots of greeners and some scab. Shape is lumpy even if they aren't misshaped. Disappointing.
MSX156-1	White skin. A lot of scab, scurfy looking. A lot of splits. Round, round shape. Lots of culls
MSZ108-08	Dark purple skin, fairly smooth. Round mostly, some slightly oblong. Pretty uniform. Few chefs. Deep eyes on some, some smooth. A little scab
MSZ413-6	Nice shape, round and flattened, slightly oblong. Nice purple skin, smooth. Bright white flesh. Nice looking. Few culls.
MSZ416-08RY	Nice shape, round, mostly round with a few oblongs. A few culls. Medium dark red skin color. Skin texture present that mutes the color. Slightly yellow flesh
NADF102629C-4	White skin, white flesh. Skin is nice, bright white. Decent size. Culls are a few knobs and cracks. Oblong to round shape. Starting to sprout. Medium eye.
NADF113484B-1	Medium red skin. Round round shape. Great size, chefs are big, A's are big. Overall really nice. A few growth cracks but not bad. Few culls. Shallow eyes, few.
Natascha	Good yield. Smooth, yellow skin. Some knobs. Raised eyes. Some greeners. Overall nice. Oblong shape, somewhat flat. Decent size, big A's. Some teardrop shaped.

Table 5: Comments on Varieties

Variety	Comments
NY118	Large, oblong to round. Chef's and A's are round to slightly flattened. Nice red skin, lighter red. Lot of chefs. Overall yield is light but it sized up well
NY171	White skin with purple splashes. Very oblong, flat. Good looking. Great size, large tubers. Purple splash looks interesting. Some of the eyes are raised. Smooth skin, bright white with a dark purple splash, very nice looking. Yellow flesh. Good yield.
Paroli	Excellent yield. Misshapes and knobs present. White skin, dark yellow flesh. Some splits. Oblong shape. Smooth skin.
Q112-5	Bright, white skin. Nice looking. Good size, a good amount of chefs and A's. Shape is variable, round to oblong flat. Round are round and oblongs are flat. No major cull issues. Smooth skin. Overall nice.
S40-1	White skin with pink eye. Very round. Smaller size. Very uniform. Culls are misshapes. Pale yellow flesh. Tiny bit of scab. A's are a decent size but a lot of B's
S43-1	Blush pink skin, slight orange tint. Shape is all over the place, rounds to oblongs to fingerlings almost. Eyes are bright pink. Not many culls. On the smaller size. Yellow flesh. Some sprouting. The oblong A's are falling through grader to B basket
S47-2	Dark purple skin. Fingerling type, oblong and teardrop shape. Not many misshapes, a few knobs. Not bad overall, just small.
S47-3	Purple skin. Oblong shape, similar to ADK purple. Some knobs. Larger A's are oblong round. B's are round. Muted purple skin, roughness to it. Medium eye. A lot of small tubers. Starburst purple flesh with a white ring.
S47-5	Purple skin, purple flesh. So many knobs. Small, low yielding.
S48-1	Nice bright beige skin. Nice shape, round round. Decent size. Yellow flesh. Smooth skin. A few pointed ends. Nice overall. Some PVY as well.
S51-1	Pink skin, light. Skinned extremely easily, severe issue. Oblong shape. Shape and size aren't bad but the skinning is a big issue. A little scab and PVY. Overall yield isn't very high. White flesh. Got pressure cracks from light handling.
S74-2	Red skin, nice looking, medium to dark. Small size, high setting type, no chefs. A few misshapes. Almost all round.
S77-1	Small, high set B, lots of small tubers. No chefs. Beautiful medium red skin. Oblong to flat round. Few culls, no misshapes. Thin skin, roughed by grader
Tacoma	Bright yellow skin. A ton of misshapes, some greener. Does not look good. Raised eyes.
Yukon Gold	Nice looking. Slightly flattened, slightly round, oblong. Yields look good. A few splits. Overall nice.