

Sweet Potato Variety Trial 2020



Cornell Cooperative Extension | Eastern NY Commercial Horticulture Program

Variety Trial



Information About Variety Trials Columbia County Site (mineral soils)

- Located at Samascott Orchards, Kinderhook, NY
- All slips were from Jones Family Farms, Bailey, North Carolina
- Planted on raised beds with black plastic mulch on 6.5' centers
- Two Planting Configurations were used:
 - Slips were planted in a single row down the center of the row, 12 inches apart
 - Double staggered row, with the two rows 18" apart on the bed with plants 12" apart in the rows.
- Planted June 4, 2020
- Roots harvested September 25, 2020.
- Each section was 10 feet and two replications were planted.

Information About Variety Trials Orange County Site (muck soils)

- Located at Morgiewicz Produce, Goshen, NY
- All slips were from Jones Family Farms, Bailey, North Carolina
- Planted on flat beds with black plastic mulch on 6.5' centers
- Only a double staggered row, with the two rows 18" apart on the bed with plants 12" apart in the rows was used at this site.
- Planted June 3, 2020
- Roots harvested September 24, 2020.
- Each section was 10 feet and two replications were planted.

Averre

- Standard sweet potato color, reddish skin, orange flesh
- In Columbia County, 2 row yielded 29,641 marketable lbs per acre. 1 row yielded 33,433 lbs per acre
- In Orange County, Averre was highest yielding at 47,532 marketable lbs per acre
- 1 row had large roots but veins that are not pleasant to look at. 2 row had smaller roots and less veins



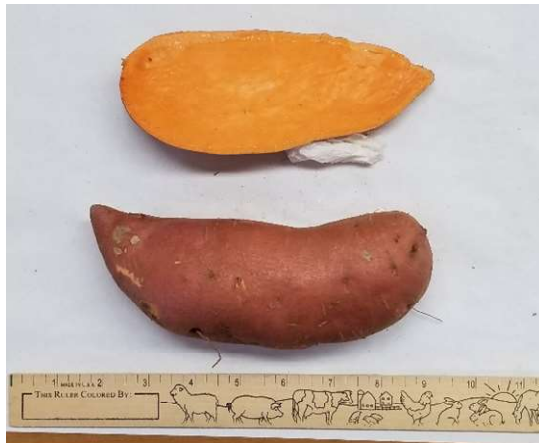
Bayou Belle

- Dark red skin and dark orange flesh
- In Columbia County, 1 row production was highest yielding 49,232 marketable lbs and 2 row was 7th in yield 39,135 lbs
- In Orange County, it yielded 37,519 marketable lbs per acre
- Both 1 row and 2 row production had nicely shaped roots, not too long or bulbing



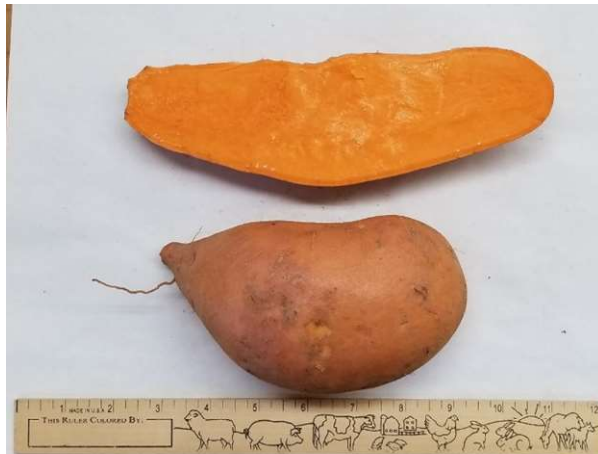
Beauregard

- 2 row was 3rd highest yielding in the Columbia County trial with 43,289 lbs marketable yield per acre
- 1 row was fourth highest yielding in the same trial with 42,800 lbs marketable yield per acre
- In Orange County, it yielded 41,441 marketable lbs per acre
- Standard sweet potato color, reddish skin, orange flesh
- Decent shape but in 1 row production will produce very thick roots. 2 row had nicer and more uniform roots, long and cylindrical with good width
- Almost half of 1 row roots were jumbo sized (>32 oz)



Bellvue

- Orange skin, orange flesh
- Shapes are either bulbous or long. Strongly pointed. 2 row is more uniform and shape is less of an issue
- In Columbia County, 1 row had 39,409 lbs of marketable yield and 2 row had 41,312 lbs. They were 5th and 6th in yield
- In Orange County, it had 38,408 marketable lbs per acre



Burgandy

- Dark red skin, dark orange flesh
- In Columbia County, 1 row had 47,932 lbs of marketable yield and 2 row had 35,858 lbs. 1 row was 2nd in yield
- In Orange County, it had 39,520 marketable lbs per acre
- Roots are very long and fairly large in 1 row production. 2 row had nice uniform roots, mostly cylindrical with some lumpiness. Some intestines but they size up



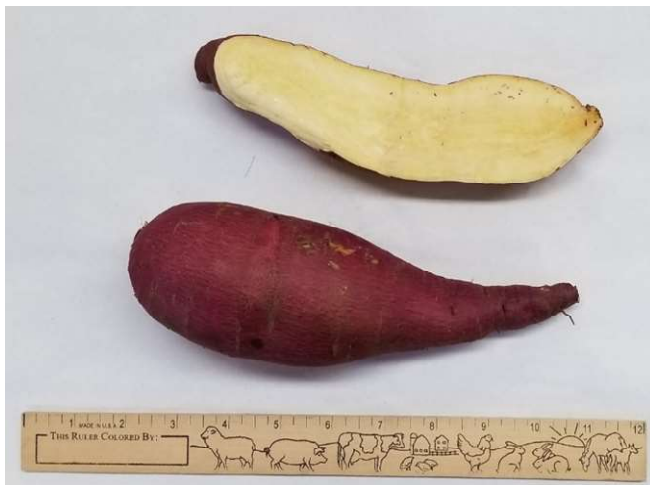
Covington

- Standard sweet potato color, reddish skin and orange flesh
- In Columbia County, 1 row yielded 31,021 lbs and 2 row yielded 26,150 lbs
- In Orange County, it was 2nd in marketable yield with 45,051 lbs per acre
- 1 row roots had inconsistent shape and size, varied a lot. 2 row was much more consistent and produced nice sized roots



Murasaki

- Purple skin with some netting and bright white flesh
- Produced a lot of long, slender, cylindrical roots, 2 row roots were shorter and more uniform
- In Columbia County, it was one of the lowest marketable yielding varieties, 1 row yielding 21,855 lbs per acre and 2 row yielding 23,035 lbs per acre
- In Orange County, it was lowest in marketable yield with 17,562 lbs per acre



NC-531

- Standard sweet potato color, reddish skin, orange flesh
- Overall lowest yielding variety in Columbia County, 1 row had 21,728 lbs marketable yield and 2 row had 19,919 lbs
- In Orange County, it was 2nd lowest yielding with 19,597 marketable lbs per acre
- Had some elephant hide issues
- Nice cylindrical and slightly bulbous shape and very uniform
- Size and shape were excellent this year



Orleans

- Reddish skin, light orange flesh
- Produced some extremely large roots in the 1 row. 2 row produced fairly large long roots with some bulbous shapes
- Roots were so large that there was mechanical damage from the lifter
- In Columbia County, 2 row marketable yield was 32,743 lbs per acre and 1 row was 34,525 lbs per acre
- In Orange County, it yielded 31,062 lbs marketable yield
- Average root size for both 1 row and 2 row was over 16oz
- Had fewer roots for the same amount of yield compared to other varieties:

Variety	Total Marketable Yield (lb)	Total # Marketable Roots
Orleans	34505	33165
Averre	33433	46900



Thank you to our cooperators,
Samascott Orchards and Morgiewicz
Produce, and to the breeders at
Louisiana State University

The Eastern New York Commercial Horticulture Program is a
Cornell Cooperative Extension Partnership between Cornell
University and the CCE Associations in the 17 Eastern New York
counties.

